

1. Asus A

Em7

you'd just be - lieve in me.
 you'd just be - lieve in

2. Asus A F Bridge:

me. And you will ne - ver see a day I'll ev - er break your heart, you'll see the

G

sky fall down be - fore it ev - er gets that far. I'll show you heav - en ev - ery se - cond that you're

A B

in my arms. Ba - by, I'm cra - zy, but I'm cra - zy 'bout you.



nev - er paint your world blue. — And if some-times it seems I
on - ly one that I'll give it to. Go let them say that I'm a



N.C.

must have lost my mind, I might be cra - zy, but I'm cra - zy for you. — I'd lie for you and
fool to act this way, 'cause if I'm cra - zy, I'm just cra - zy 'bout you. — I'd lie for you and

Chorus:

that's the truth. Do an - y - thing you ask me to, wo wo. —
that's the truth. Move moun-tains if you want me to, wo wo. —

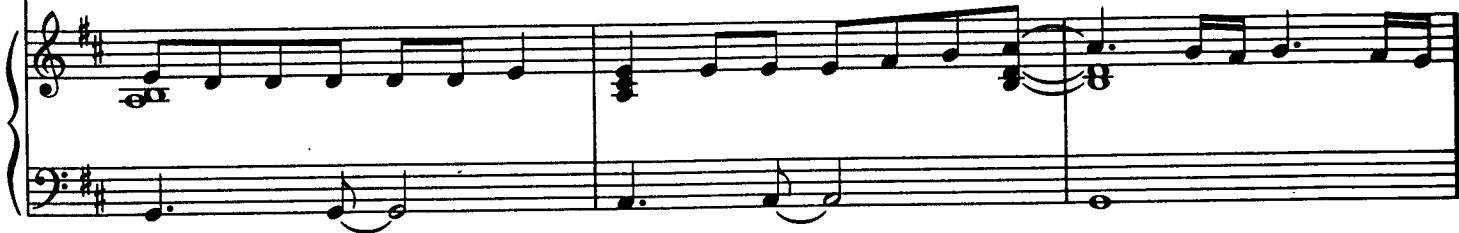


— I'd e - ven sell my soul for you, I'd do it all — for you, if
— I'd walk a - cross the fire for you, I'd walk on the wire for you, if



one who'd al - ways be a - round.
I'll take you to par - a - dise.

Ba - by, give me a chance.
Ain't a star that's too far.

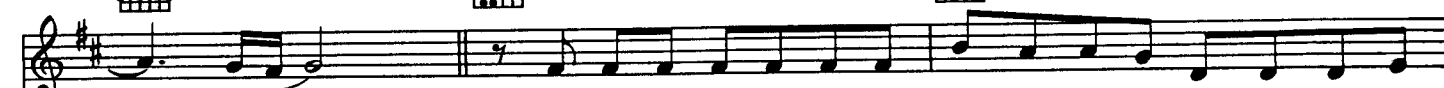


I'd pull the sun down from the sky to light your dark - est night.
Your ev - ery wish will be a wish that I will make come true.



I would-n't let one drop of rain fall down in - to your life.
And if you want the moon I'll swear I'll bring it down for you.

Put your heart in my hands.
Let me in - to your heart.



Ba - by, be - lieve me I could nev - er do you wrong and I would
Be - lieve me ba - by, got your name carved on my soul, 'cause you're the



I'D LIE FOR YOU (AND THAT'S THE TRUTH)

Words and Music by
DIANE WARREN

Moderately slow ♩ = 88

A5 D G2 A

mf

D G2 A Bm7 A

G(9) D/F# Em Asus A

Verse:

D A/D G(9) D A/D

1. I'd nev - er tell you one lie, — I'd nev - er let you down. I'd nev - er leave, I'd be the
 2. Just take a look in my eyes, — you'll see a love that's blind. Just take a hold of my hand,