

CAN'T CRY ANYMORE

Words and Music by
SHERYL CROW and BILL BOTTRELL

Moderately ♩ = 96



mf



N.C.

Verses 1-3:



1. Took your car
2. Mon - ey comes in,
3. (*Instrumental solo...*)

drove to Tex - as.
but the fact is

Sor - ry hon - ey,
not e - nough



but I sus-pect-ed we were through... And I can't cry _____ an - y - more..
to pay my tax - es, and I _____ can't cry _____ an - y - more..



Since I left
Got a broth - er,
...end solo) Could be worse,



been feel - in' bet - ter 'cause that's what you get when you stay to-gether too long..
he's got real prob - lems, he - ro - in, now there's just no stop-ping him to -
I could-'ve missed my call-ing. Some-times it hurts but when you read the writ-ing on the

Em

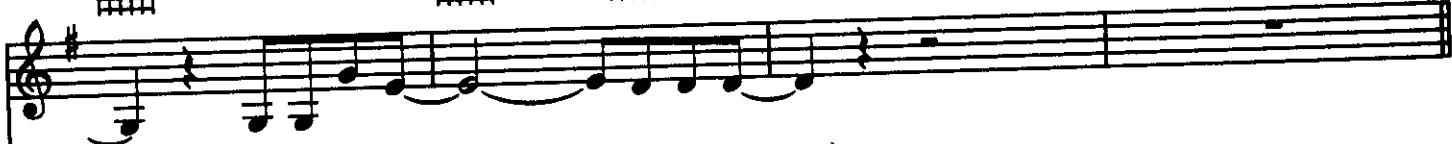
C

D5

G5

D5

G5



night. _____ an - y - more.____
 wall, _____ an - y - more.____
 And I can't cry _____ an - y - more.____
 And I can't cry _____ an - y - more.____
 can't cry _____ an - y - more.____



Chorus:

Em7

Am

Em7



Would-n't it be good if we could hop a flight to an-y-where. Say so long_ to this life.____



A

C

G5

C

G5



So much_ for pre-tend - ing.



1. 2. C G5 C D5 N.C.

bad luck's_ nev - er end - ing. And now I know that

3. C G5 C G5 C G5

ing. And too much time_ I been spend-ing with my

C G5 C D5 N.C.

heart in my hands wait - ing for time to come and mend it. *(Spoken): I can't cry anymore.*

G5 D5 G5 D5 G5 D5 G5 Repeat ad lib. and fade D5 G5

I can't cry an - y - more._ Can't cry an - y - more.