

# Will I Ever Find A Love

Bass Line originally played by Francis " Rocco " Prestia  
Transcription by Pierre Verger, 1978

As recorded by Tower Of Power  
Composer : Stephen Kupka & Emilio Castillo  
From the album " Tower Of Power " 1973 Warner Bros

1  $\text{♩} = 76$  2 3 4

Bass Guitar

5 6 7 8

9 10 11 12

13 14 15 16

17 18 19 20

21 22 23 24

25 26 27 28

29 30 31 32

33 34 35 36

37 38 39 40

The image displays a musical score for Bass Guitar, consisting of 40 numbered measures. The score is written in bass clef with a 4/4 time signature. The tempo is marked as quarter note = 76. The key signature is one flat (Bb). The score includes various musical notations such as eighth notes, sixteenth notes, and slurs. Measure 6 contains a 'sl.' (slide) instruction. Measure 16 contains a 'sl.' (slide) instruction and a measure rest. Measure 20 ends with a double bar line and repeat sign. The score is divided into four systems of ten measures each.

41

42

43

44



45

46

47

48

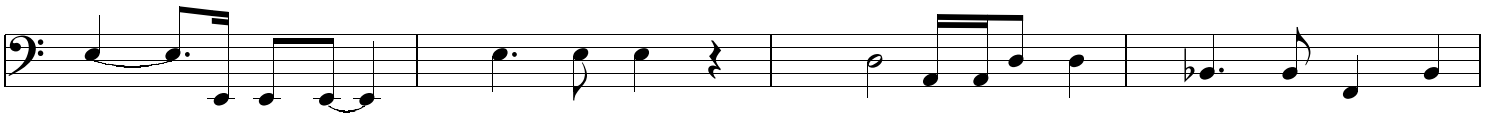


49

50

51

52

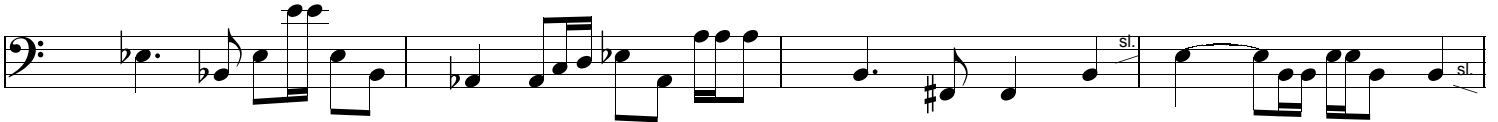


53

54

55

56



57

58

59

60

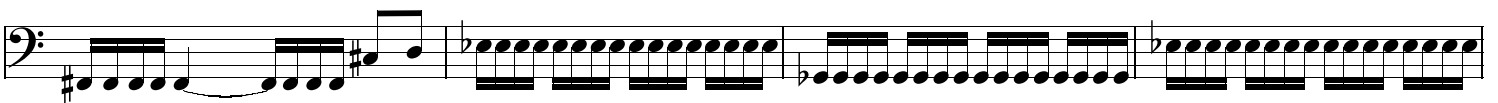


61

62

63

64



65

66

67

68



69

70

71

(Ralentir)

