

I DON'T LIVE TODAY

Words and Music by JIMI HENDRIX

Moderate Rock ♩ = 112

Introduction

Drum Solo

Musical notation for the Drum Solo introduction, showing a 4/4 time signature and a series of eighth notes with accents.

Guitar

Musical notation for the Guitar introduction, showing a 4/4 time signature and a series of eighth notes with accents.

1st Verse

H.H.

Play 21

Musical notation for the 1st Verse, showing a 4/4 time signature and a series of eighth notes with accents, including a "Play 21" instruction.

Musical notation for the 1st Verse, showing a 4/4 time signature and a series of eighth notes with accents, including a triplet.

Ride Cym. ^

Musical notation for the Ride Cymbal part, showing a 4/4 time signature and a series of eighth notes with accents, including a triplet.

Musical notation for the Ride Cymbal part, showing a 4/4 time signature and a series of eighth notes with accents, including a triplet.

Musical notation for the Ride Cymbal part, showing a 4/4 time signature and a series of eighth notes with accents, including a triplet.

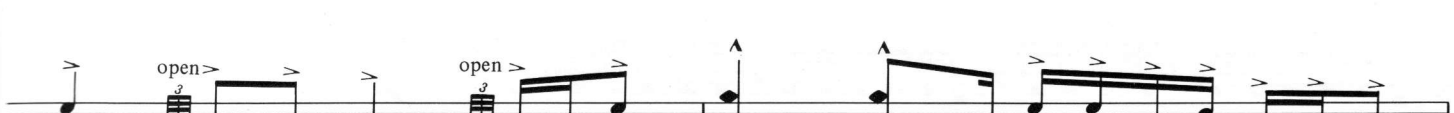
Please Note: Overdub not practical, therefore omitted.

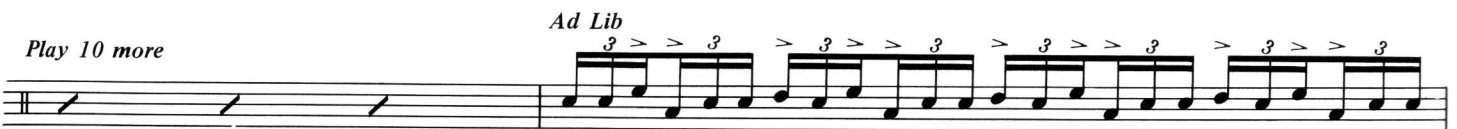
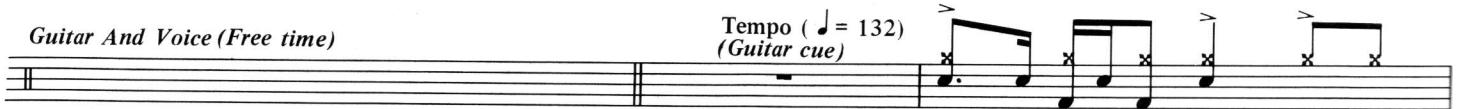
Copyright © 1967 by BELLA GODIVA MUSIC, INC.

This arrangement © 1989 by BELLA GODIVA MUSIC, INC.

All rights controlled and administered by Don Williams Music Group, Inc.

All Rights Reserved International Copyright Secured





*At this point mitch in provises *In free time*. Due to the complexty of writing this improvisation *In time*, I include the basic rhythms approx. when they occur. The player should use them as a guide and ad lib, keeping in mind Mitch Michell's style of improvisation.