

From the Motion Picture "THE PAPER"
MAKE UP YOUR MIND

Written by RANDY NEWM.

Easy blues ♩ = 112

Chord Diagrams:
 B \flat (x3 2 1 0 0 0)
 D7/F \sharp (x0 2 3 2 1 0)
 Gm (x3 2 0 0 3 3)
 B \flat /F (x2 3 3 2 1 0)
 E \flat (x0 2 1 0 0 0)
 B \flat /F (x2 3 3 2 1 0)
 F7 (x1 2 3 1 1 0)
 B \flat 7 (x2 3 3 2 1 0)
 B \flat 7 (x2 3 3 2 1 0)

Lyrics:
 I know how I got in tro
 - ble, I know how I came to grief.

I know why peo-ple all o-ver are dis-ap-point-ed with me...



When I get up I want down,...



when I got thin I want fat, fat, fat, fat. When I get square I want



round, when I got this I want that. You bet-ter make up your mind...

B \flat 7



You bet - ter make up your mind. — *I understand wh*

Make up your mind. — *you're saying to me but I can't do it.*

D \flat



B \flat +



Ev - 'ry time things look good, makes me feel bad.

D \flat



E \flat



Each time the lit - tle bird of hap - pi - ness flies — by,

C7

F7(#5)

Bb7

makes me feel so God damn sad I want to cry.

Bb

F7

Bb7

Bb

Eb

Bb/F

F7

Bb7

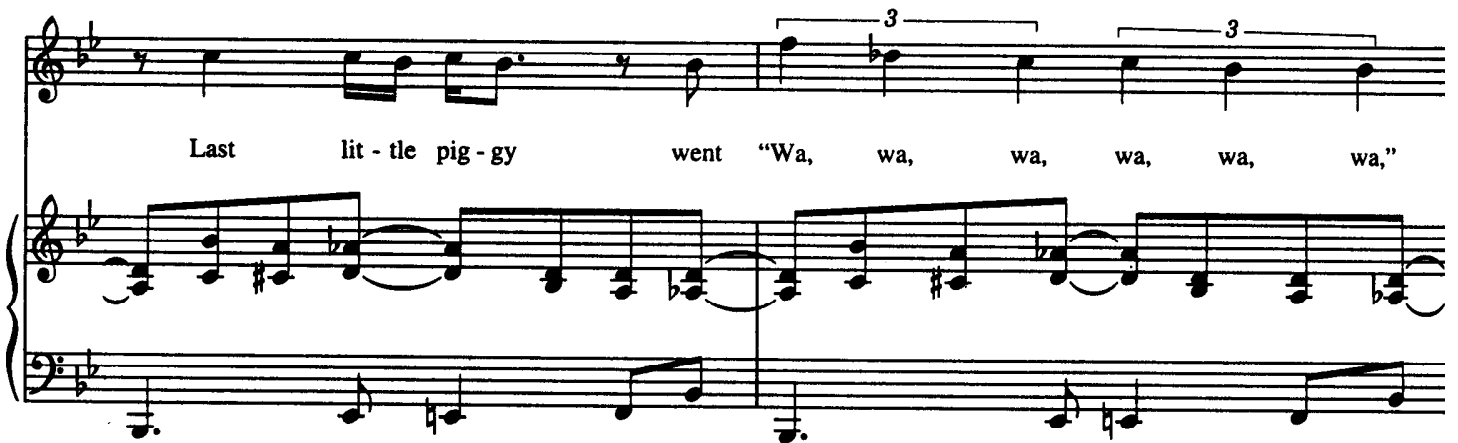
Bb7

This lit - tle pig - gy went to the mar - ket,

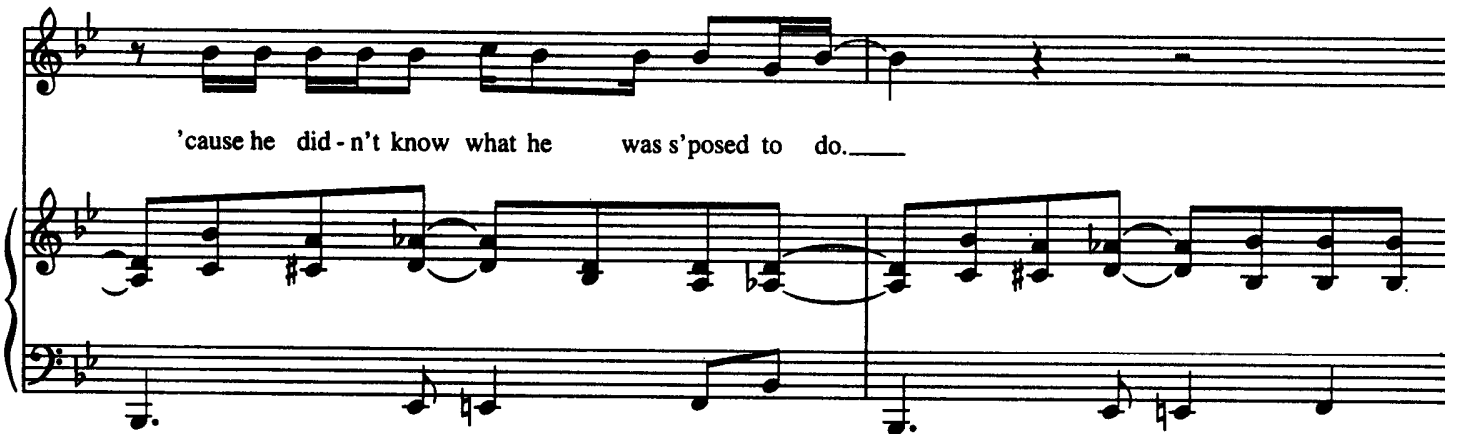
that lit - tle pig - gy got caught up and put in the zoo.---



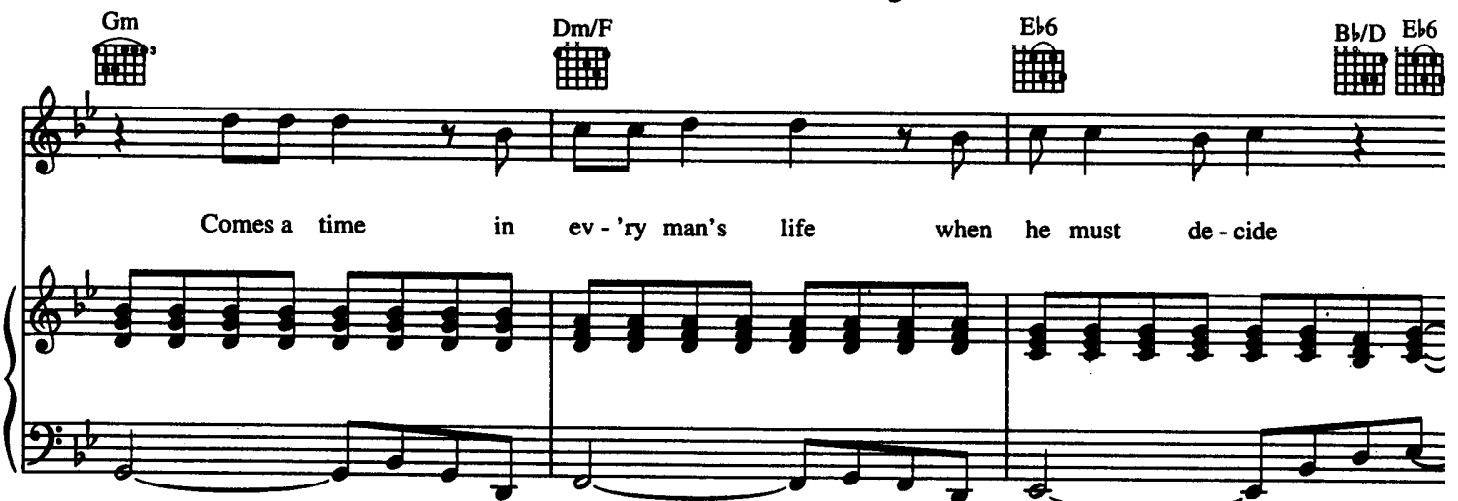
Last lit - tle pig - gy went "Wa, wa, wa, wa, wa, wa, wa,"




'cause he did - n't know what he was s'posed to do.---

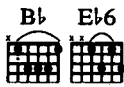


Comes a time in ev - 'ry man's life when he must de - cide

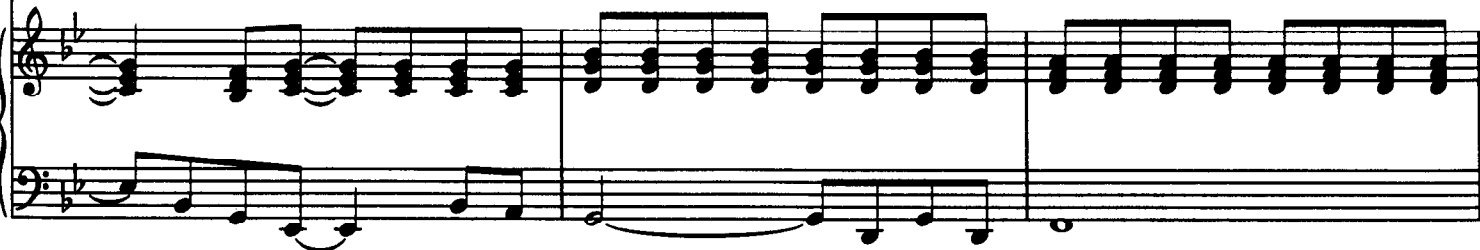


Gm Dm/F Eb6 Bb/D Eb6

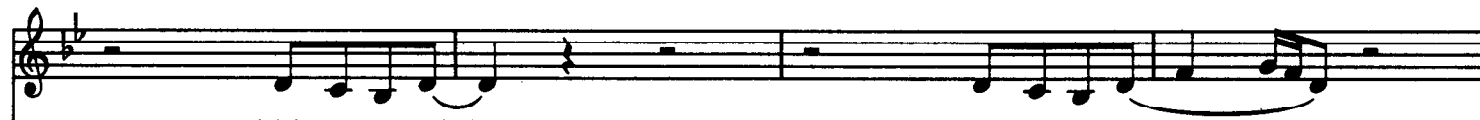
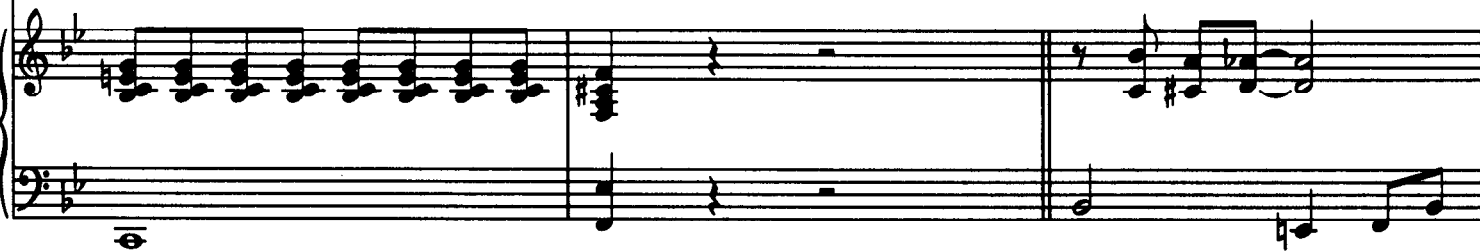




wheth-er he want... to drive the bus... or



just go a - long for the ride. You bet - ter make up your mind.---



Make up your mind... *I understand you, sister.* Make up your mind... *I understand you.*



sister Make up your mind... *but I can't* do it.

