

# The Girl From Ipanema

garota de ipanema

ANTONIO CARLOS JOBIM  
D- D-6

G<sup>6</sup><sub>9</sub>

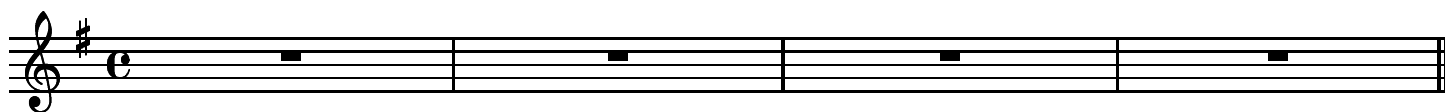
D-

D-6

G<sup>6</sup><sub>9</sub>

D-

D-6

G<sup>Δ</sup><sub>9</sub>A<sub>13</sub>

Tall and tan and young and love-ly the girl from I - pa - ne - ma goes walk-ing and when  
When she walks she's like a Sam-ba that swings so cool and sways so gen-tle, that when

A-

A<sup>b</sup><sub>7</sub><sup>b5</sup>G<sup>Δ</sup>A<sup>b</sup><sub>7</sub>G<sup>Δ</sup>

1.

2.



she pass - es, each one she pass - es goes Aaaaah!  
she pass - es, each one she pass - es goes Aaaaah!

A<sup>b</sup><sub>Δ</sub>D<sup>b</sup><sub>9</sub>G<sup>#</sup><sub>-9</sub>

Oh, but I watch her so sad - ly. How

E<sub>9</sub>A-<sub>9</sub>

can I tell her I love her? Yes, I would give my heart

F<sub>9</sub>

B-

E<sup>b</sup><sub>7</sub><sup>#11</sup>

A-



glad - ly. But each day when she walks to the sea, she looks straight a-head not at

D7<sup>b9</sup><sub>#11</sub>GΔ<sup>9</sup>

A13



me Tall and tan and young and love - ly the girl from I - pa - ne-

A-9

A<sup>b</sup><sub>7b5</sub>

GΔ

A<sup>b</sup><sub>7b5</sub>

- ma goes walk - ing and when she pass - es I smile, but she does - n't see

GΔ

A<sup>b</sup><sub>7b5</sub>

GΔ

A<sup>b</sup><sub>7b5</sub>

GΔ

A<sup>b</sup><sub>7b5</sub>

GΔ

