

Gi. Bolje 692
GAVA fr. ing. C. O. Bolje af Gennäs
1924

Fughetta
per
Chitarra
composta da

Mauro Giuliani

op. 118

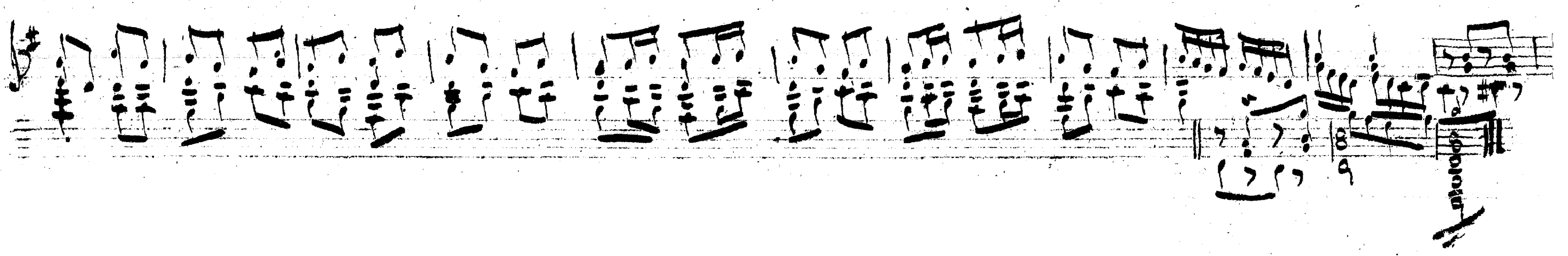
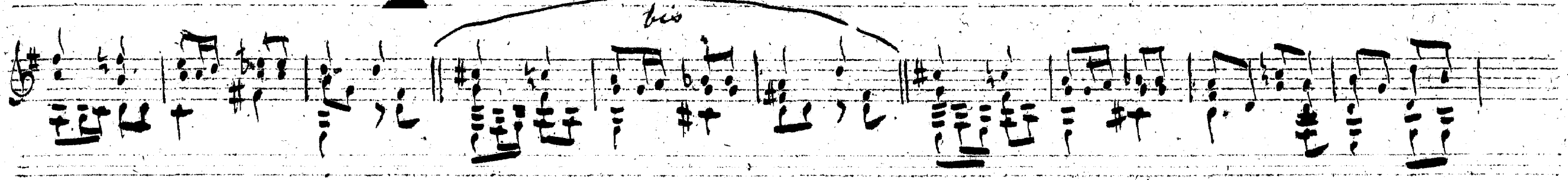
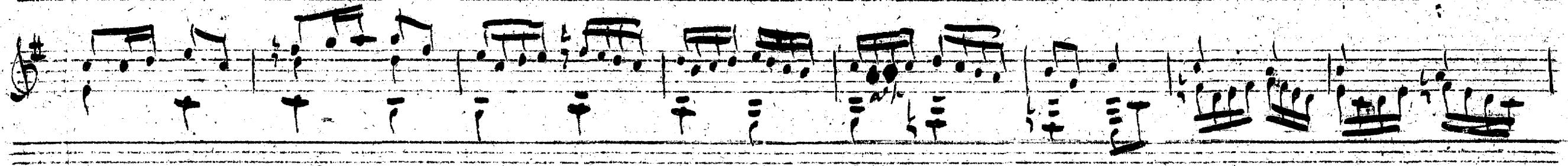
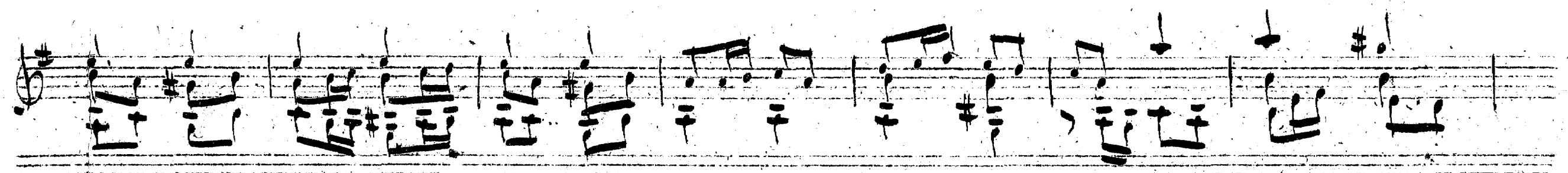


Handwritten musical notation on two staves. The top staff begins with a treble clef, a key signature of one sharp (F#), and a 4/4 time signature. The notation includes various note values, rests, and dynamic markings. The bottom staff continues the piece with similar notation. The piece concludes with a double bar line.

1924
1123

Fughetta

A handwritten musical score for a piece titled "Fughetta". The score is written on seven staves, each with a treble clef and a key signature of one sharp (F#). The music is a fugue, characterized by its imitative texture. The first staff begins with a melodic subject, which is then taken up by the other voices in subsequent staves. The notation includes various rhythmic values such as eighth and sixteenth notes, as well as rests. The handwriting is clear and legible, typical of a composer's manuscript.



Handwritten musical notation on a single staff. It begins with a treble clef and a key signature of one sharp (F#). The notation includes various note values, rests, and dynamic markings such as *mf* and *ff*. There are also some handwritten annotations above the staff, possibly indicating fingerings or performance instructions.

Handwritten musical notation on a single staff. It starts with a treble clef and a key signature of one sharp. A section is marked with a large 'A' and a double bar line. The notation includes notes, rests, and dynamic markings like *mf* and *ff*. There are also some handwritten annotations above the staff, possibly indicating fingerings or performance instructions.

Handwritten musical notation on a single staff. It begins with a treble clef and a key signature of one sharp. The notation includes notes, rests, and dynamic markings such as *mf* and *ff*. There are also some handwritten annotations above the staff, possibly indicating fingerings or performance instructions.

Handwritten musical notation on three staves. The first staff begins with a treble clef and a key signature of one sharp. A section is marked with 'Var.' and a double bar line. The notation includes notes, rests, and dynamic markings like *mf* and *ff*. There are also some handwritten annotations above the staff, possibly indicating fingerings or performance instructions. The word 'fanto' is written in the second staff.

Handwritten musical notation on a single staff. It begins with a treble clef and a key signature of one sharp. The notation includes notes, rests, and dynamic markings such as *mf* and *ff*. There are also some handwritten annotations above the staff, possibly indicating fingerings or performance instructions.