

GIBRALTER ROCK

Rock

Arr. Sammy Nestico

Flute

Moderate Rock

4

The musical score for Flute is written in 4/4 time with a key signature of two flats (B-flat major). The tempo is marked 'Moderate Rock'. The score begins with a treble clef and a 4/4 time signature. The first staff contains a whole rest followed by a measure with a quarter note G4, a quarter note A4, and a quarter note B4, all with accents. A circled 'A' is placed below the staff. The second staff continues with a quarter rest, a quarter note G4, a quarter note A4, and a quarter note B4, all with accents. The third staff continues with a quarter rest, a quarter note G4, a quarter note A4, and a quarter note B4, all with accents, followed by a slur over a quarter note G4, a quarter note A4, a quarter note B4, and a quarter note C5. The fourth staff continues with a slur over a quarter note G4, a quarter note A4, a quarter note B4, and a quarter note C5, followed by a quarter rest, a quarter note G4, and a quarter note A4. The fifth staff is marked 'To Coda' and contains a slur over a quarter note G4, a quarter note A4, a quarter note B4, and a quarter note C5, followed by a quarter rest, a quarter note G4, and a quarter note A4. The sixth staff is marked 'B' and contains a quarter rest, a quarter note G4, a quarter note A4, and a quarter note B4, all with accents and a 'p' dynamic. The seventh staff continues with a quarter rest, a quarter note G4, a quarter note A4, and a quarter note B4, all with accents and a 'p' dynamic, followed by a slur over a quarter note G4, a quarter note A4, a quarter note B4, and a quarter note C5. The eighth staff continues with a slur over a quarter note G4, a quarter note A4, a quarter note B4, and a quarter note C5, followed by a quarter rest, a quarter note G4, and a quarter note A4. The ninth staff contains a quarter note G4, a quarter note A4, a quarter note B4, and a quarter note C5, all with accents, followed by a slur over a quarter note G4, a quarter note A4, a quarter note B4, and a quarter note C5. The tenth staff contains a quarter note G4, a quarter note A4, a quarter note B4, and a quarter note C5, all with accents, followed by a slur over a quarter note G4, a quarter note A4, a quarter note B4, and a quarter note C5. The eleventh staff contains a quarter note G4, a quarter note A4, a quarter note B4, and a quarter note C5, all with accents, followed by a slur over a quarter note G4, a quarter note A4, a quarter note B4, and a quarter note C5. The twelfth staff contains a quarter note G4, a quarter note A4, a quarter note B4, and a quarter note C5, all with accents, followed by a slur over a quarter note G4, a quarter note A4, a quarter note B4, and a quarter note C5. The score concludes with a Coda section marked 'D.S. al Coda CODA'.

GIBRALTER ROCK

Oboe

Sammy Nestico

Moderate Rock

4



A

To Coda

B

D. S. al Coda

CODA

GIBRALTER ROCK

1st Bb Clarinet

Sammy Nestico

Moderate Rock 4

The musical score for the 1st Bb Clarinet part of "Gibraltar Rock" is written in 4/4 time. It begins with a treble clef and a key signature of one flat (Bb). The tempo is marked "Moderate Rock". The score consists of 11 staves of music. The first staff contains a whole rest for the first two measures, followed by a quarter rest and a quarter note with a flat and an accent. The second staff features a circled section marker 'A' above the first measure, which contains a quarter rest and a quarter note with a flat and an accent. The third staff continues with a quarter rest and a quarter note with a flat and an accent, followed by a series of eighth notes with slurs. The fourth staff includes a circled section marker 'B' above the first measure, which contains a quarter rest and a quarter note with a flat and an accent. The fifth staff has a "To Coda" instruction with a Coda symbol above the first measure, followed by a series of eighth notes with slurs. The sixth staff continues with a quarter rest and a quarter note with a flat and an accent, followed by a series of eighth notes with slurs. The seventh staff features a series of eighth notes with slurs and a quarter note with a flat and an accent. The eighth staff continues with a series of eighth notes with slurs and a quarter note with a flat and an accent. The ninth staff features a series of eighth notes with slurs and a quarter note with a flat and an accent. The tenth staff continues with a series of eighth notes with slurs and a quarter note with a flat and an accent. The eleventh staff concludes with a series of eighth notes with slurs and a quarter note with a flat and an accent. The score ends with a Coda section consisting of two staves of music, starting with a Coda symbol and a quarter note with a flat and an accent.

Y729

GIBRALTER ROCK

Sammy Nestico

2nd B \flat Clarinet

Moderate Rock

4



mf

A

To Coda

B

D.S. $\%$ al Coda

\oplus CODA

GIBRALTER ROCK

Rock

Arr. Sammy Nestico

B \flat Bass Clarinet

Moderate Rock



mf

(A)

To Coda \oplus

(B)

D. S. \mathcal{R}
al Coda

\oplus CODA

Y7211

GIBRALTER ROCK

Sammy Nestico

E♭ Alto Saxophone (Alto Clarinet - Alto Horn)

Moderate Rock



mf

A

B

To Coda

D. S. CODA

al Coda

Y7212

GIBRALTER ROCK

Bb Tenor Saxophone (Baritone T.C.)

Sammy Nestico

Moderate Rock



mf

A

To Coda

B

D. S. al Coda

CODA

GIBRALTER ROCK

Sammy Nestico

E♭ Baritone Saxophone

Moderate Rock



mf

A

GIBRALTER ROCK

Original Rock
by Sammy Nestico

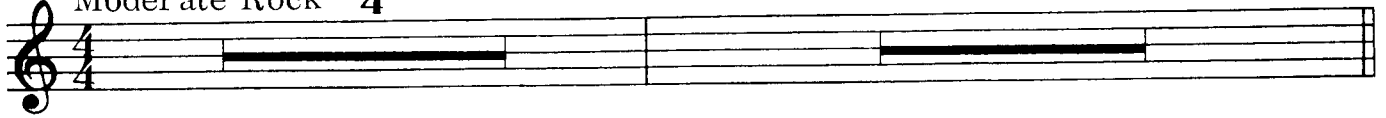
1st B \flat Cornet

Moderate Rock

4

§

4



A



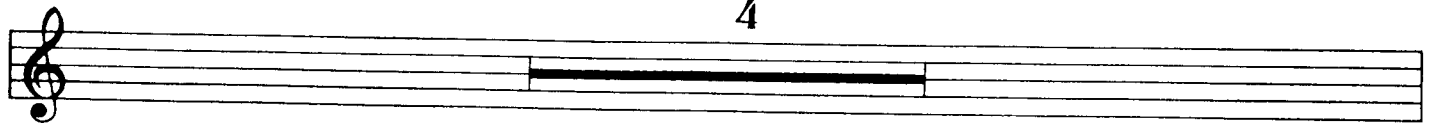
To Coda

B

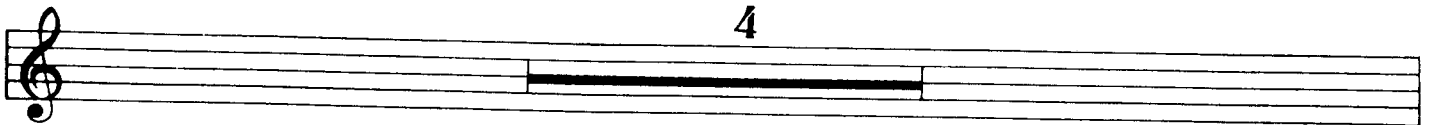
3



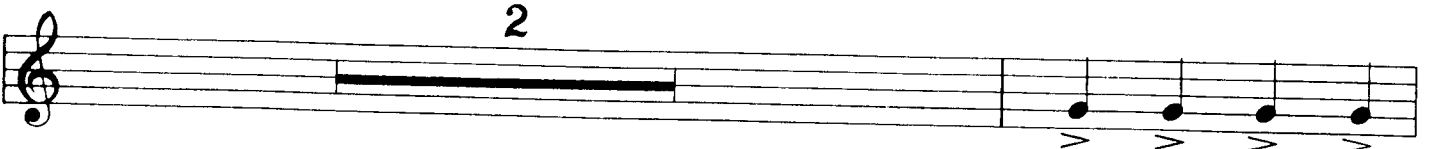
4



4



2



D. S. §
al Coda

⊕ CODA



GIBRALTER ROCK

2nd B \flat Cornet

Moderate Rock

4

Sammy Nestico

Musical staff with treble clef, 4/4 time signature, and a whole rest.

Musical staff with treble clef, 4/4 time signature, a repeat sign, a circled 'A', and a melodic phrase.

Musical staff with treble clef and a melodic phrase.

Musical staff with treble clef, a circled 'B', a '3' above a rest, and a melodic phrase.

Musical staff with treble clef and a melodic phrase.

Musical staff with treble clef, a '5' above a rest, and a whole rest.

Musical staff with treble clef, a '4' above a rest, and a whole rest.

Musical staff with treble clef, 'D.S. al Coda' and 'CODA' markings, and a melodic phrase.

Y7216

Copyright © 1972 by Studio 224, Lebanon, Ind. 46052
All Rights Reserved International Copyright Secured

Printed in U.S.A.

GIBRALTER ROCK

Sammy Nestico

F Horn

Moderate Rock



mf

(A)

To Coda

(B)

D.S. al Coda

CODA

Y7217

Baritone B. C.

GIBRALTER ROCK

Sammy Nestico

Moderate Rock

mf

A

To Coda

B

D.S. al Coda

CODA

GIBRALTER ROCK

Trombone(Bassoon)

Sammy Nestico

Moderate Rock

mf

A

B

To Coda

D. S. Coda
al Coda

Coda

GIBRALTER ROCK

Sammy Nestico

Tuba

Moderate Rock



mf

A

To Coda

B

D.S. al Coda

CODA

Y7220

GIBRALTER ROCK

Percussion(S. D., B. D., Tambourine, Cymbal)

Sammy Nestico

Moderate Rock

(Tamb.)
Cym.-S. D.

B. D. *mf*

A

To Coda

B

S. D. Solo

D. S. al Coda

CODA

ALL THRU THE NIGHT

Welsh Folk Song

Arr. Sammy Nestico

Flute

Slowly

(A)

(B) Slightly Faster

(C) A Tempo

ALL THRU THE NIGHT

6

Oboe

Welsh Folk Song
Arr. Sammy Nestico

Slowly

mp

mp

A

mf

mf

B Slightly Faster

mf

Ritard - - -

mf

C A Tempo

mf

p

Y728

ALL THRU THE NIGHT

Welsh Folk Song
Arr. Sammy Nestico

1st B \flat Clarinet

Slowly

A

B Slightly Faster

Ritard - - -

C A Tempo

Y729

ALL THRU THE NIGHT

2nd B \flat Clarinet

Welsh Folk Song
Arr. Sammy Nestico

Slowly

mp

mp

A

mf

B Slightly Faster

Ritard - - -

C A Tempo

mf

p

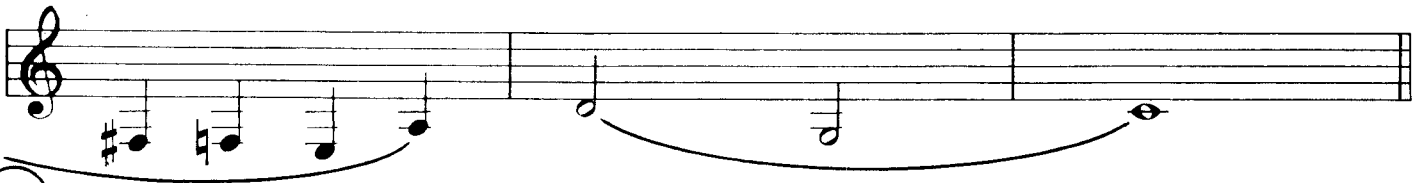
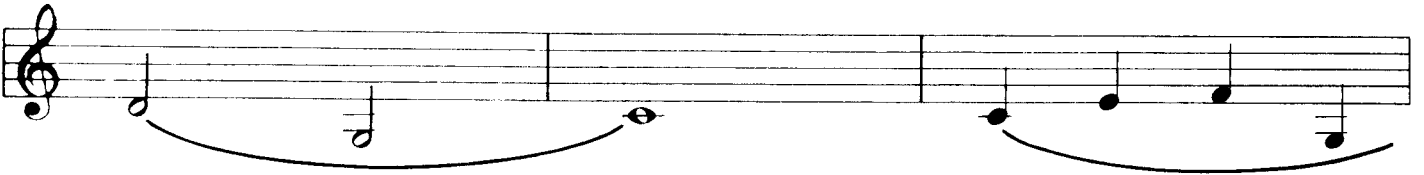
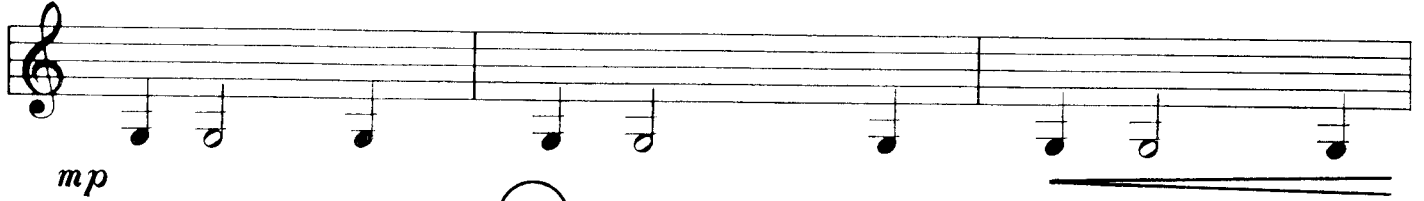
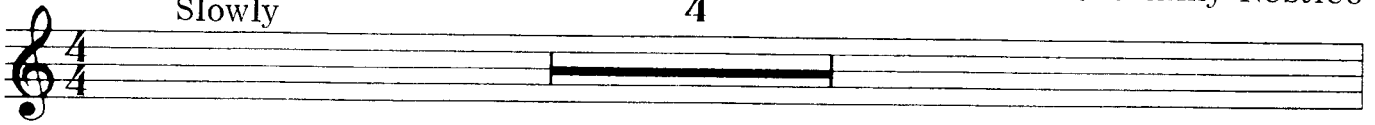
ALL THRU THE NIGHT

B \flat Bass Clarinet

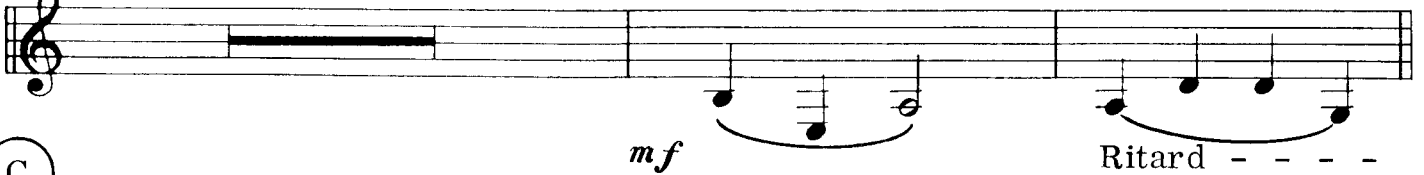
Welsh Folk Song
Arr. Sammy Nestico

Slowly

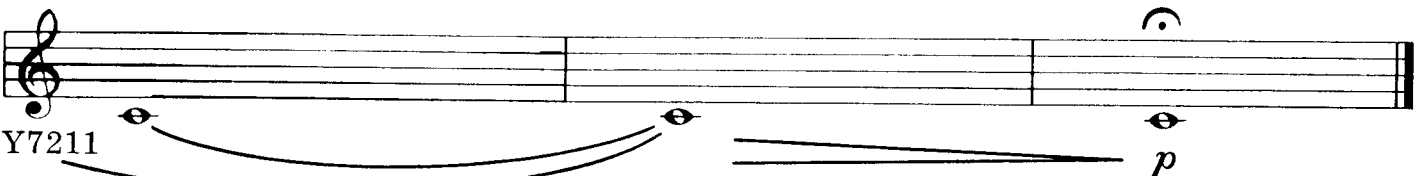
4



B Slightly Faster 2



C A Tempo



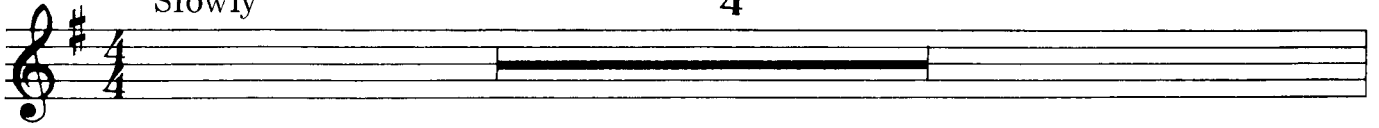
ALL THRU THE NIGHT

E♭ Alto Saxophone (E♭ Alto Cl., E♭ Alto Horn)

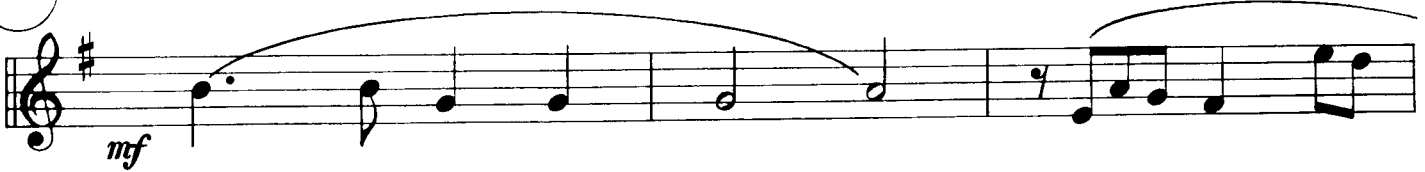
Welsh Folk Song
Arr. Sammy Nestico

Slowly

4

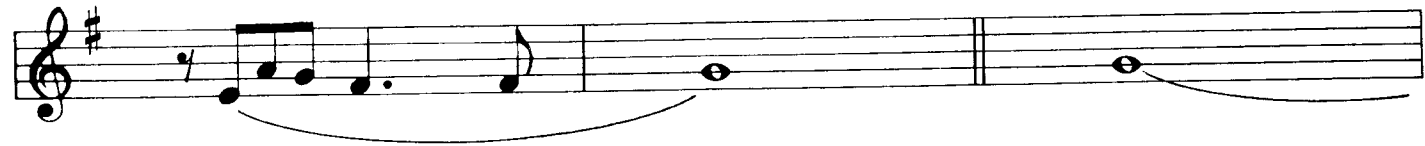


A



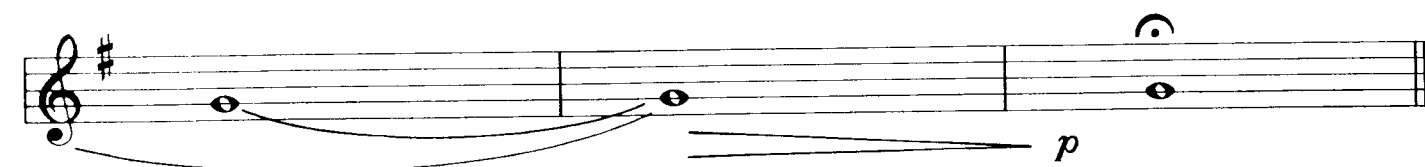
B

Slightly Faster



C

A Tempo



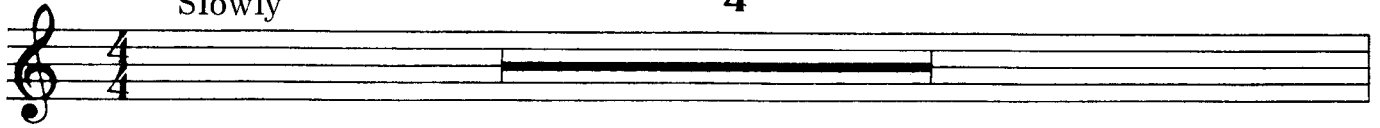
ALL THRU THE NIGHT

B \flat Tenor Saxophone (Baritone T. C.)

Welsh Folk Song
Arr. Sammy Nestico

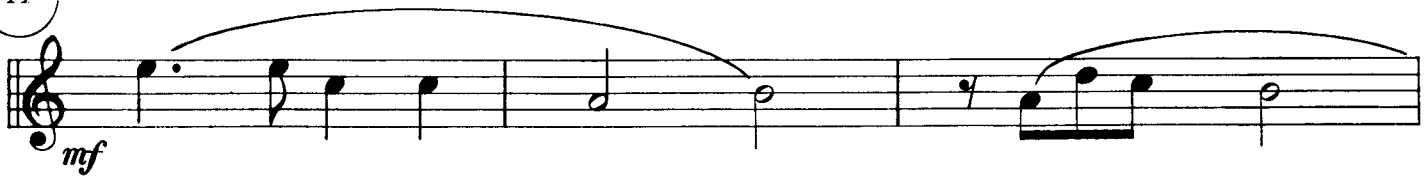
Slowly

4



mp

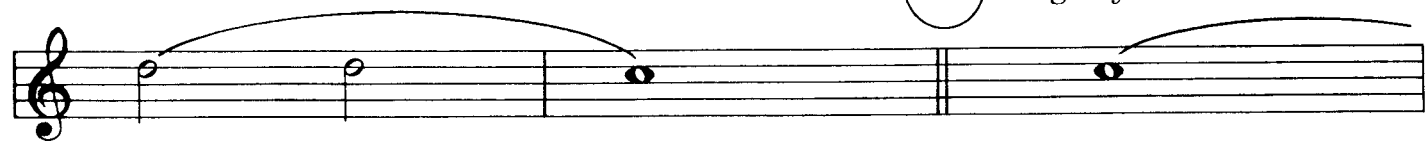
A



mf



B Slightly Faster



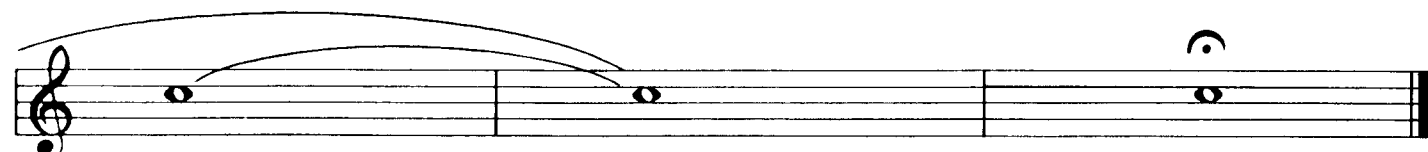
Ritard - - -



C A Tempo



mf



p

ALL THRU THE NIGHT

E \flat Baritone Saxophone

Welsh Folk Song
Arr. Sammy Nestico

Slowly 4

mp

A

mf

mf

B Slightly Faster

mf

1 Ritard - - - -

mf

C A Tempo

mf

p

ALL THRU THE NIGHT

1st B \flat Cornet

Welsh Folk Song
Arr. Sammy Nestico

Slowly 4

A

B Slightly Faster
1

3

Ritard - -

C

A Tempo

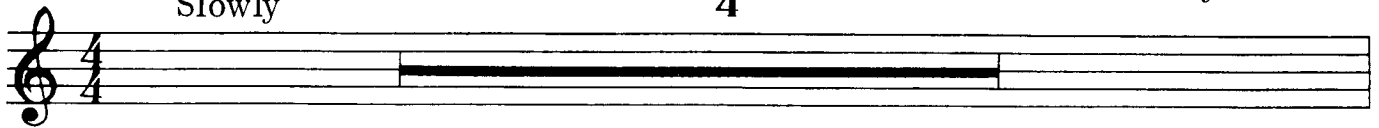
ALL THRU THE NIGHT

2nd B \flat Cornet

Welsh Folk Song
Arr. Sammy Nestico

Slowly

4



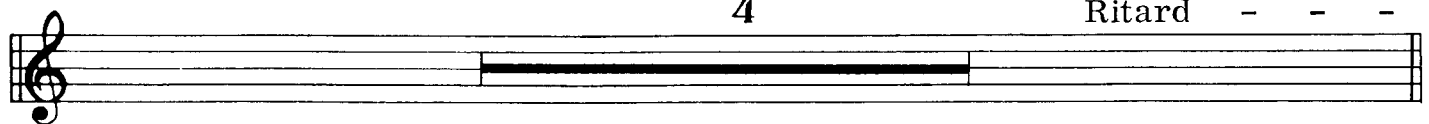
A



B Slightly Faster

4

Ritard - - -



C A Tempo



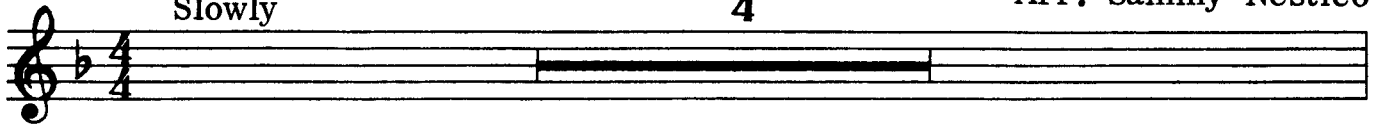
ALL THRU THE NIGHT

F Horn

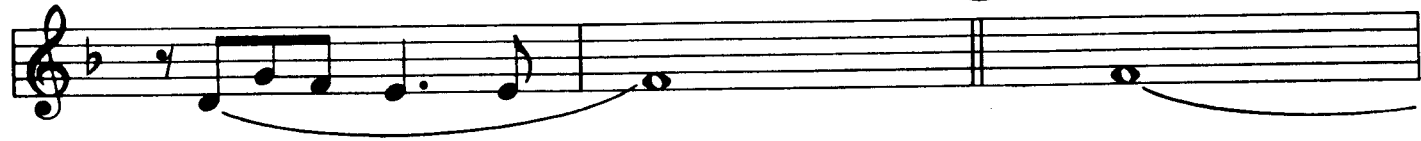
Welsh Folk Song
Arr. Sammy Nestico

Slowly

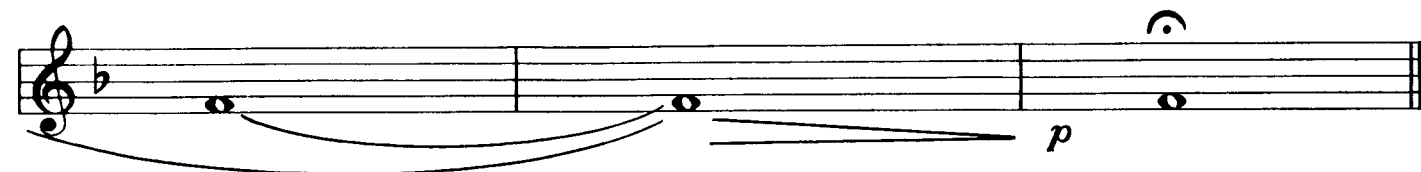
4



B Slightly Faster



C A Tempo



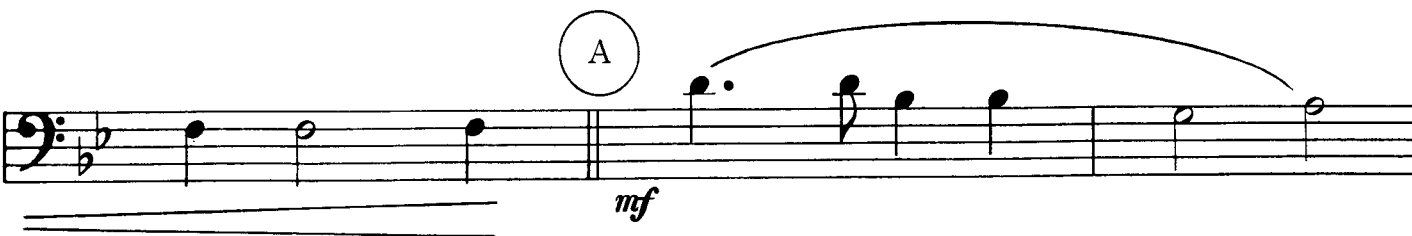
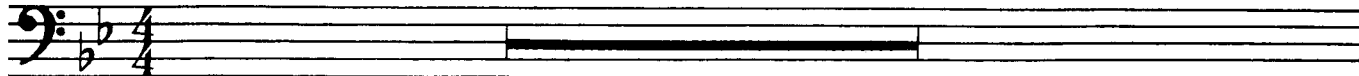
ALL THRU THE NIGHT

Baritone B. C.

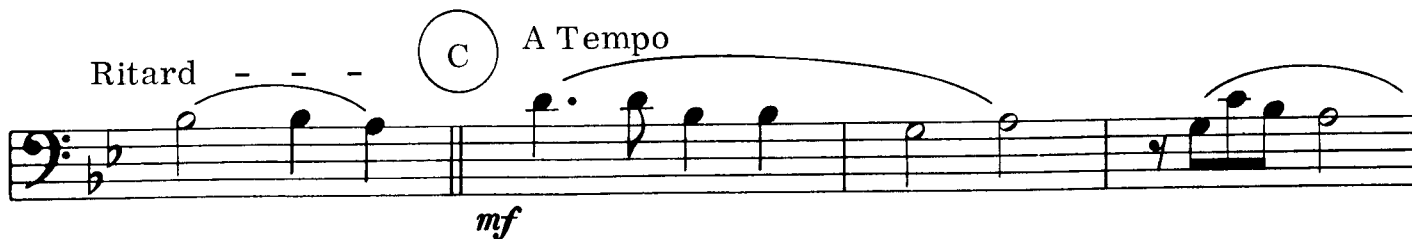
Welsh Folk Song
Arr. Sammy Nestico

Slowly

4



B Slightly Faster

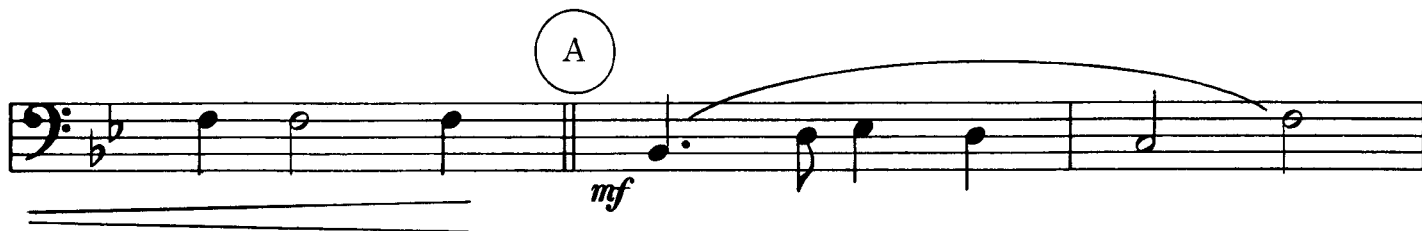
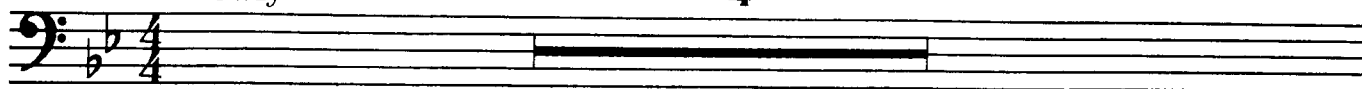


ALL THRU THE NIGHT

Trombone(Bassoon)
Slowly

Welsh Folk Song
Arr. Sammy Nestico

4



ALL THRU THE NIGHT

Tuba

Welsh Folk Song
Arr. Sammy Nestico

Slowly

4

A

B Slightly Faster

2

Ritard

C A Tempo

Y7220

ALL THRU THE NIGHT

Percussion

(Bells, Sus. Cym., Triangle)

Welsh Folk Song

Arr. Sammy Nestico

Slowly

(Bells) *mp*

Sus. cym. *mp*
(Soft mallets)

A

2

(Bells) *mf*

2

B Slightly Faster
(Bells)
Triangle

Ritard

C A Tempo
(Bells)
(Sus. cym.)

(Bells) *p*