

## I 'm Your Puppet

Bass Line originally played by Donald " Duck " Dunn  
Transcribed by Pierre VERGER, 1999

Recorded by Sam & Dave, November 15, 1966  
Composer : Oldham & Penn

1  $\text{♩} = 94$  2

3 4

5 6

7 8

9 10

11 12

13 14 15

16 17 18

19 20 21

22 23

Detailed description: This image shows a musical score for the bass line of the song 'I'm Your Puppet'. The score is written in bass clef with a 4/4 time signature and a key signature of one flat (Bb). The tempo is marked as quarter note = 94. The score consists of 23 numbered measures. Measures 1-12 feature a rhythmic pattern of quarter notes and eighth notes. Measures 13-15 are a triplet of eighth notes. Measures 16-18 feature a triplet of eighth notes. Measures 19-21 feature a rhythmic pattern of quarter notes and eighth notes. Measures 22-23 feature a rhythmic pattern of quarter notes and eighth notes. Slurs and 'sl.' markings are used to indicate phrasing and slurs.

24 25 26

Staff 24-26: Bass clef, 3/4 time signature. Measure 24: quarter note G2, quarter note A2. Measure 25: quarter note B2 with sl. (slide), quarter note C3, quarter note D3. Measure 26: quarter note E3, quarter note F3, quarter note G3.

27 28 29

Staff 27-29: Bass clef, 3/4 time signature. Measure 27: quarter note G2, quarter note A2, quarter note B2. Measure 28: quarter note C3, quarter note D3, quarter note E3. Measure 29: quarter note F3, quarter note G3, quarter note A3.

30 31 32

Staff 30-32: Bass clef, 3/4 time signature. Measure 30: quarter note G2, quarter note A2 with sl. (slide), quarter note B2. Measure 31: quarter note C3, quarter note D3, quarter note E3. Measure 32: quarter note F3, quarter note G3, quarter note A3.

33 34 35

Staff 33-35: Bass clef, 3/4 time signature. Measure 33: quarter note G2, quarter note A2, quarter note B2. Measure 34: quarter note C3, quarter note D3, quarter note E3. Measure 35: quarter note F3, quarter note G3, quarter note A3.

36 37 38

Staff 36-38: Bass clef, 3/4 time signature. Measure 36: quarter note G2, quarter note A2, quarter note B2. Measure 37: quarter note C3, quarter note D3, quarter note E3. Measure 38: quarter note F3, quarter note G3, quarter note A3.

39 40 41

Staff 39-41: Bass clef, 3/4 time signature. Measure 39: quarter note G2, quarter note A2, quarter note B2. Measure 40: quarter note C3, quarter note D3, quarter note E3. Measure 41: quarter note F3, quarter note G3, quarter note A3.

42 43 44

Staff 42-44: Bass clef, 3/4 time signature. Measure 42: quarter note G2 with sl. (slide), quarter note A2, quarter note B2. Measure 43: quarter note C3, quarter note D3, quarter note E3. Measure 44: quarter note F3, quarter note G3, quarter note A3.

45 46 47

Staff 45-47: Bass clef, 3/4 time signature. Measure 45: quarter note G2, quarter note A2, quarter note B2. Measure 46: quarter note C3, quarter note D3, quarter note E3. Measure 47: quarter note F3, quarter note G3, quarter note A3.

48 49 50

Staff 48-50: Bass clef, 3/4 time signature. Measure 48: quarter note G2, quarter note A2 with sl. (slide), quarter note B2. Measure 49: quarter note C3, quarter note D3, quarter note E3. Measure 50: quarter note F3, quarter note G3, quarter note A3.

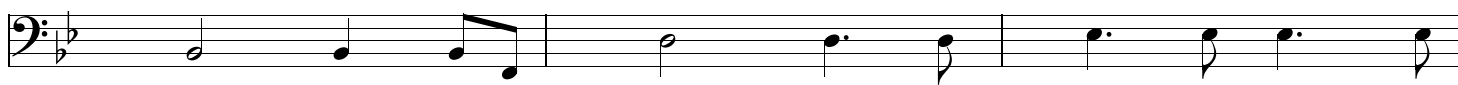
51 52 53

Staff 51-53: Bass clef, 3/4 time signature. Measure 51: quarter note G2, quarter note A2, quarter note B2. Measure 52: quarter note C3, quarter note D3 with sl. (slide), quarter note E3. Measure 53: quarter note F3, quarter note G3, quarter note A3.

54

55

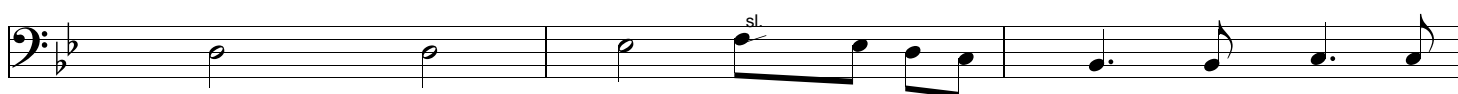
56



57

58

59



60

61

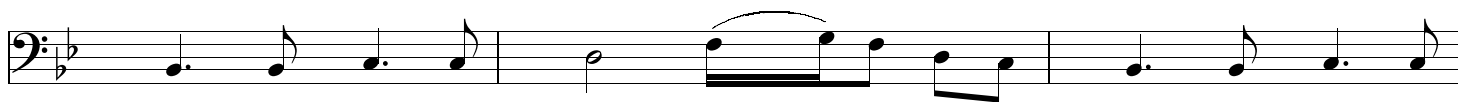
62



63

64

65



66

67

Etc. Vamp & Fade

