

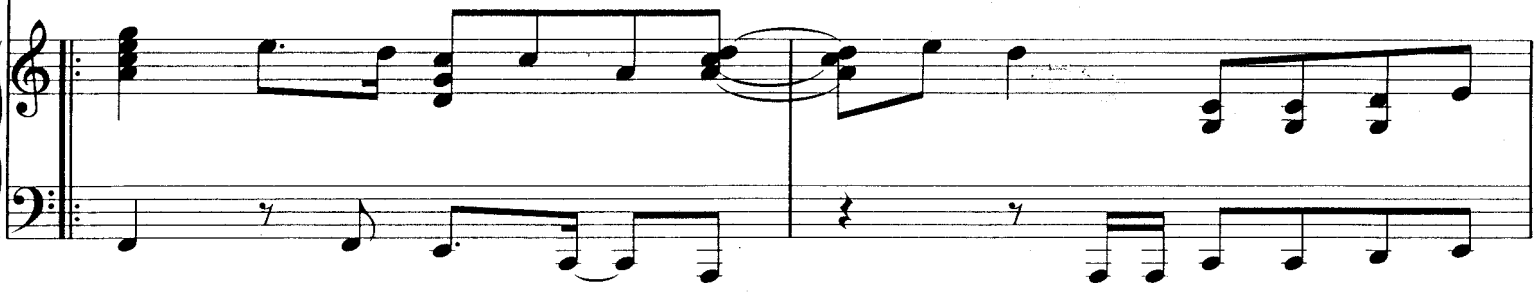
Fmaj7

Em7

Am



You've got me feel - ing e - mo - tions



Fmaj7

Em7

Am



deep - er than I've ev - er dreamed of.

Woh, oh.



Fmaj7

E7

Am

Gm7

C7

Fmaj7

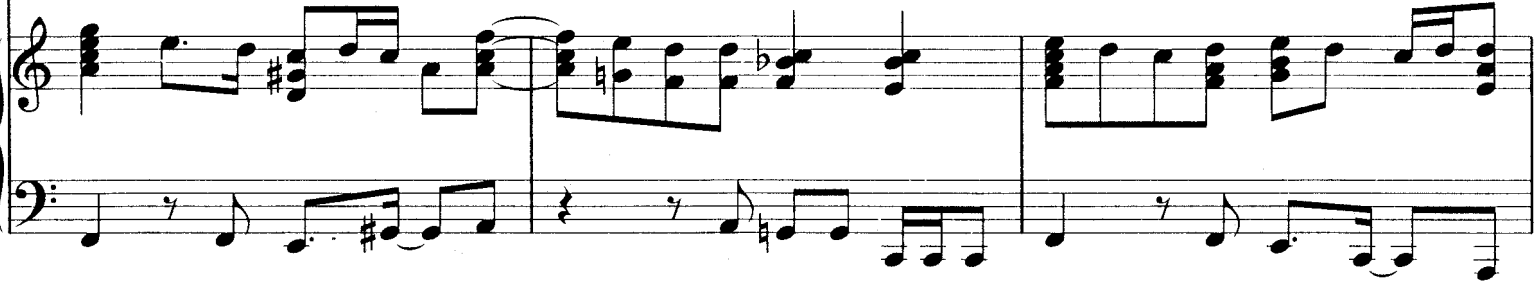
Em7

Am



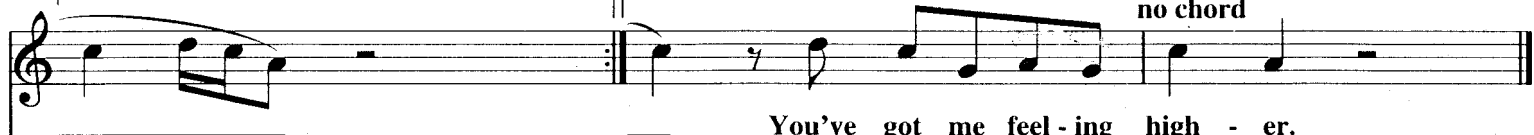
You've got me feel - ing e - mo - tions

high - er than the heav - ens a - bove.



Repeat ad lib.

Last time



no chord

You've got me feel - ing high - er.



Bb



F



E7sus



Musical staff with melody and accompaniment.

When you're look-ing in - to my eyes you

Musical staff with melody and accompaniment.

E7



8va

Fmaj7



no chord

Musical staff with melody and accompaniment.

make me feel so high!

(Vocal 1st time only)

Musical staff with melody and accompaniment.

(1st time only)

Am



E7/G#



Musical staff with melody and accompaniment.

Musical staff with melody and accompaniment.

Dm7



Em7



F/G



no chord

Musical staff with melody and accompaniment.

Musical staff with melody and accompaniment.

Fmaj7



Em7



Am



You've got me feel - ing e - mo - tions _ _

Fmaj7



Em7



Am



Fmaj7



E7



Am



deep - er than I've ev - er dreamed of. _ _

Woh, _ oh. _ You've got me feel - ing _ e -

Gm7



C7



Fmaj7



Em7



Am



- mo - tions _ _ high - er than the heav - ens a - bove. _ _

Bb/C



F/C



C



You know _ _ the _ way _ _ to make _ me lose _ con - trol. _



fly - ing high. It feels like a dream
 next to mine. It feels like a dream

Am7



D7sus



when you touch me ten - der - ly.
 when you love me ten - der - ly.



I don't know if it's real but I
 I don't know if you're for real but I



1 F/G



no chord

8va

2 F/G



no chord

8va

like the way I feel in - side.
 like the way I feel in - side.

Fmaj7

E7

Am

Gm7

C7

Fmaj7

Em7

Am



You've got me feel-ing e - mo - tions high-er than the heav-ens a - bove.

Fmaj7

Em7

Am



I feel good, In the morn - ing

I feel nice. when I rise

Fmaj7

Em7

Am



I've nev - er felt so sat - is - fied.

you are the first thing on my mind.

Fmaj7

Em7

Am

Fmaj7

Em7

Am



I'm in love, And in the mid - dle

I'm a - live. of the night

In-tox - i - cat - ed, I feel your heart - beat

EMOTIONS

Lyrics by MARIAH CAREY
 Music by MARIAH CAREY,
 DAVID COLE and ROBERT CLIVILLES

Moderate Dance tempo
 no chord

The first system of the piano introduction consists of two staves in 4/4 time. The treble clef staff begins with a dynamic marking of *mf* and contains a melodic line of eighth and quarter notes. The bass clef staff provides a rhythmic accompaniment with eighth and quarter notes.

Fmaj7

Em7

Am

Fmaj7

Em7

Am

The second system continues the piano introduction with two staves. The treble clef staff features a series of chords (Fmaj7, Em7, Am) and a melodic line. The bass clef staff continues the rhythmic accompaniment.

Fmaj7

Em7

Am

The third system marks the beginning of the vocal entry. The treble clef staff shows the vocal line starting with the lyrics "You've got me feel-ing e - mo - tions". The piano accompaniment continues in the bass clef staff.

You've got me feel-ing e - mo - tions

The fourth system continues the vocal entry. The treble clef staff shows the vocal line with the lyrics "deep - er than I've ev - er dreamed of. Woh, oh.". The piano accompaniment continues in the bass clef staff.

Fmaj7

Em7

Am

deep - er than I've ev - er dreamed of.

Woh, oh.