

GI Bolje 422

GÅVA fr. ing. C. O. Bolje af Gennäs
1924

[Handwritten signature]

[Handwritten signature]

[Handwritten signature]



1924
834.

[Faint handwritten mark]

Parantelle

Allegretto

This is a handwritten musical score for a piece titled "Parantelle" for Clav. II^{da}. The tempo is marked "Allegretto". The score consists of ten staves of music. The first staff begins with a treble clef, a key signature of two flats (B-flat and E-flat), and a 6/8 time signature. The music is written in a single system. The score includes various performance markings such as *p* (piano), *mf* (mezzo-forte), *f* (forte), and *ff* (fortissimo). There are also dynamic markings like *lococo* and *bis*. The piece concludes with a section marked "Allegro" in a 2/4 time signature. The manuscript shows signs of being a working draft, with some ink bleed-through and corrections.

Handwritten musical score consisting of ten staves of music. The key signature is G major (one sharp) and the time signature is 4/4. The score includes various musical notations such as notes, rests, beams, and slurs. Dynamics include *f*, *p*, *pp*, *pp dolce*, and *cres.*. Performance markings include *ma*, *2*, *3*, *4*, and *41*. The score concludes with a double bar line and a fermata.

cres.

pp dolce

cres.

7:9

Handwritten musical notation on a single staff. The notation includes a treble clef, a key signature of one flat (B-flat), and a time signature of 6/8. The melody consists of several measures with notes, rests, and dynamic markings such as accents and slurs. The notes are written in a cursive, handwritten style.

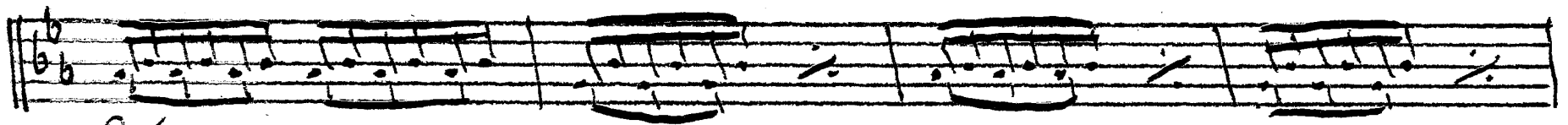
Handwritten musical notation on a single staff. The notation includes a treble clef, a key signature of one flat (B-flat), and a time signature of 6/8. The melody continues with notes, rests, and dynamic markings. There are some slurs and accents present.

Handwritten musical notation on a single staff. The notation includes a treble clef, a key signature of one flat (B-flat), and a time signature of 6/8. The melody continues with notes, rests, and dynamic markings. There are some slurs and accents present.

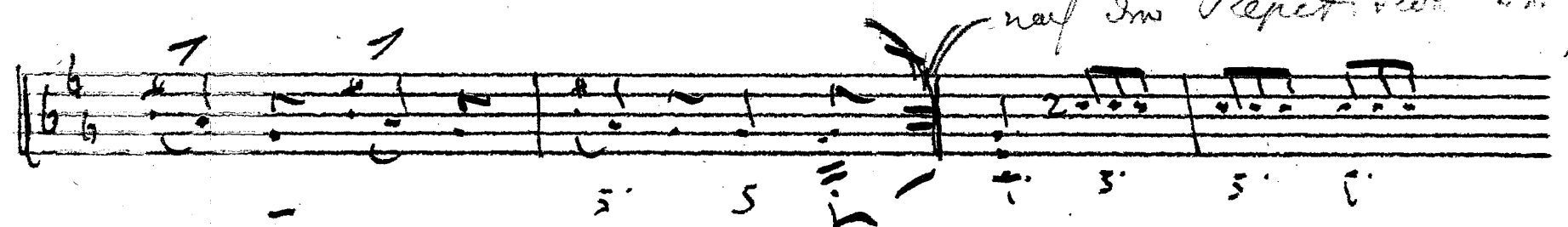
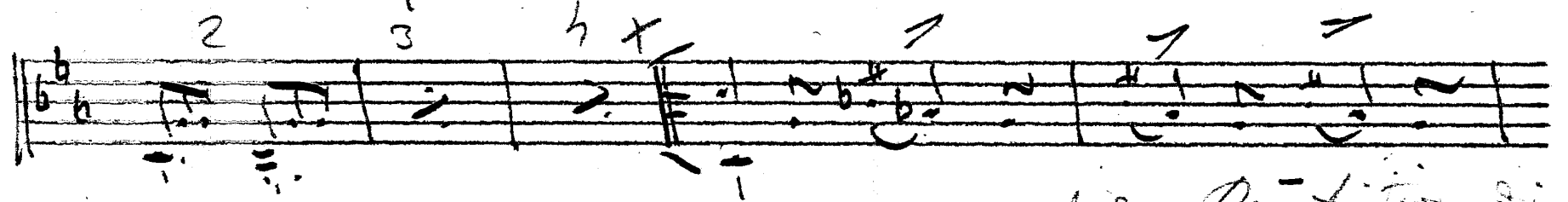
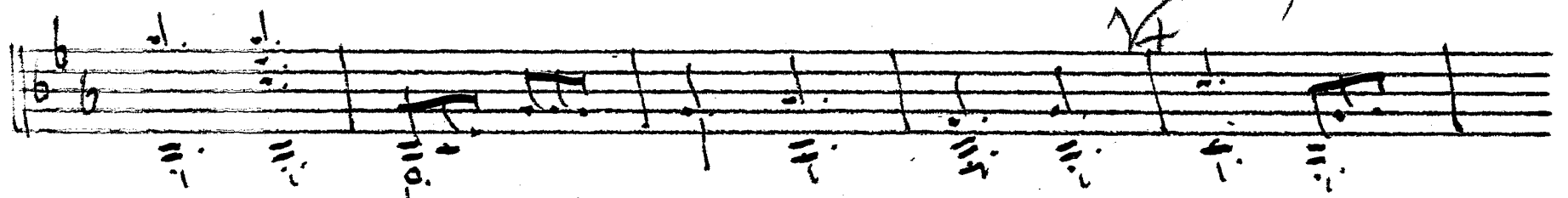
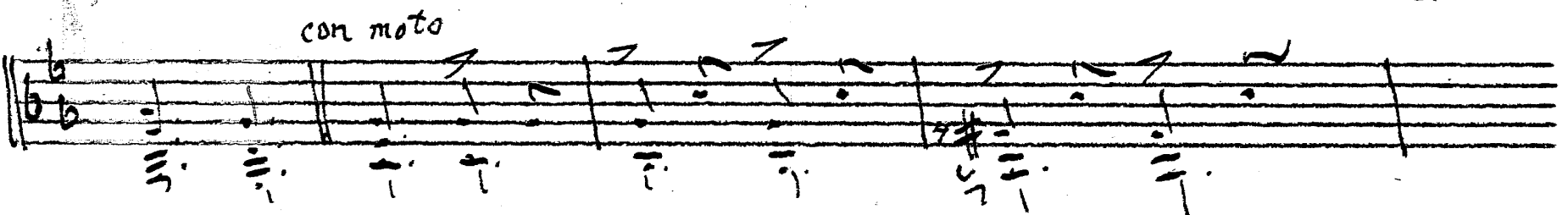
Handwritten musical notation on a single staff. The notation includes a treble clef, a key signature of one flat (B-flat), and a time signature of 6/8. The melody continues with notes, rests, and dynamic markings. There are some slurs and accents present.

Fin.

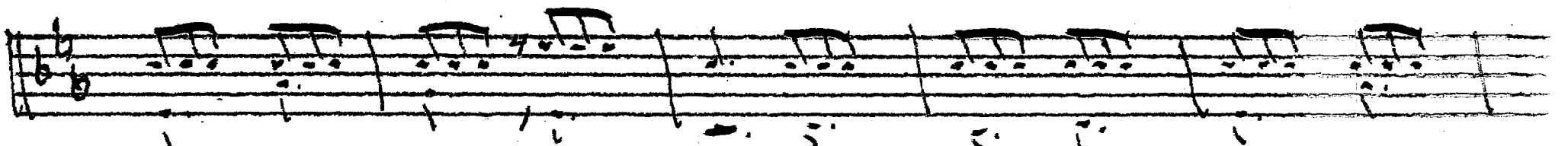
Four sets of empty musical staves, each consisting of five horizontal lines. The staves are blank, with no notation or markings.



dolce



nach der Reperitior in 4^{ter} 12. 76



Prestissimo

