

Cold Feet

Bass Line originally played by Donald " Duck " Dunn
Transcription by Pierre Verger, 1975

As recorded by Albert King, Memphis 1968
Composer : Albert King & Al Jackson Jr

1 ♩=82

2

3

Bass Guitar

Measure 1: Rest. Measure 2: G2, A2, B2, C3. Measure 3: G2, A2, B2, C3. Repeat sign.

4

5

6

Measure 4: G2, A2, B2, C3. Measure 5: G2, A2, B2, C3. Measure 6: G2, A2, B2, C3.

7

8

9

Measure 7: G2, A2, B2, C3. Measure 8: G2, A2, B2, C3. Measure 9: G2, A2, B2, C3.

10

11

12

Measure 10: G2, A2, B2, C3. Measure 11: G2, A2, B2, C3. Measure 12: G2, A2, B2, C3.

13

14

15

Measure 13: G2, A2, B2, C3. Measure 14: G2, A2, B2, C3. Measure 15: G2, A2, B2, C3. Repeat sign.

16

17

18

Measure 16: G2, A2, B2, C3. Measure 17: G2, A2, B2, C3. Measure 18: G2, A2, B2, C3.

19

20

21

Measure 19: G2, A2, B2, C3. Measure 20: G2, A2, B2, C3. Measure 21: G2, A2, B2, C3.

22

23

24

Measure 22: G2, A2, B2, C3. Measure 23: G2, A2, B2, C3. Measure 24: G2, A2, B2, C3.

25

26

27

Measure 25: G2, A2, B2, C3. Measure 26: G2, A2, B2, C3. Measure 27: G2, A2, B2, C3. Repeat sign.

28

29

30

Measure 28: G2, A2, B2, C3. Measure 29: G2, A2, B2, C3. Measure 30: G2, A2, B2, C3.

31

32

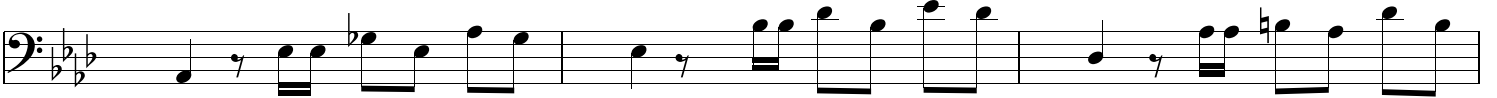
33



34

35

36



37

38

39



40

41

42



43

Etc. Vamp & Fade

