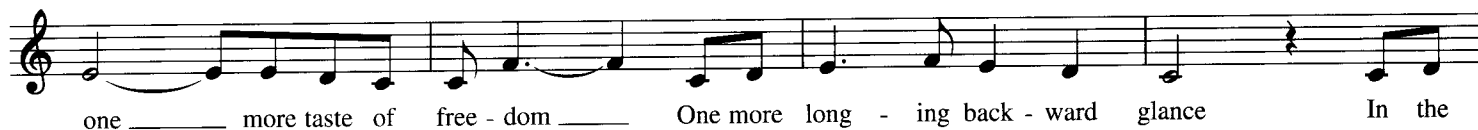
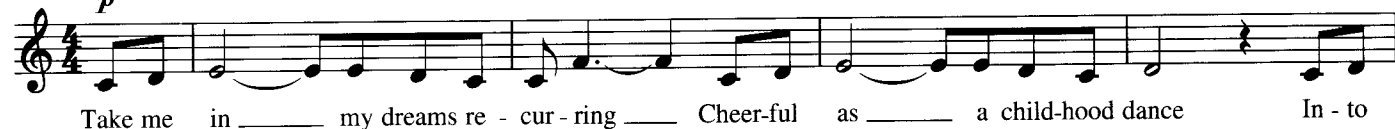


# THE GODS LOVE NUBIA

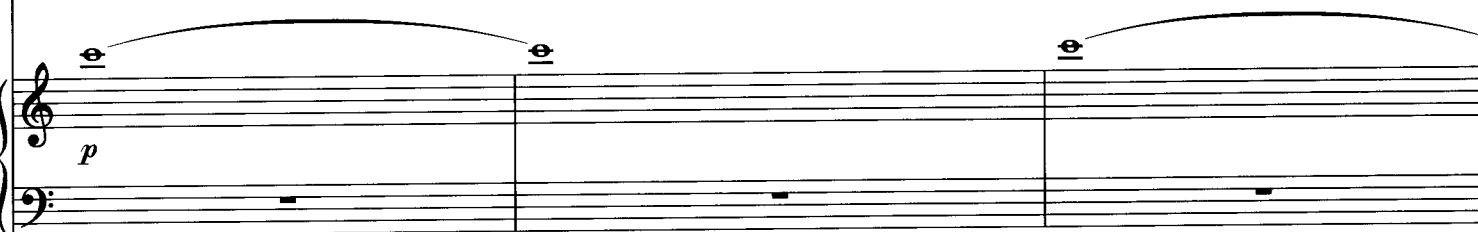
Music by ELTON JOHN  
Lyrics by TIM RICE

Measured, with inner strength

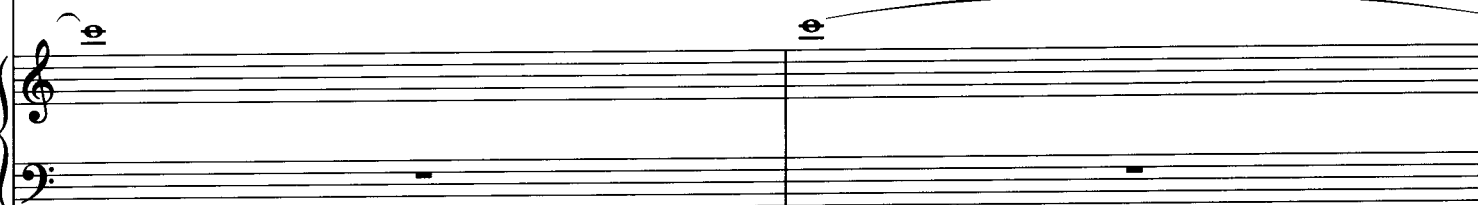
AIDA: *p* N.C.



NUBIAN: *mp*



NUBIAN: *mp*



sweet - er \_\_\_\_\_ cho - rus of that oth - er land The

Mmm \_\_\_\_\_ Mmm \_\_\_\_\_ Mmm \_\_\_\_\_

**NUBIAN: *mp***

Mmm \_\_\_\_\_ Mmm \_\_\_\_\_

Mmm \_\_\_\_\_ Mmm Mmm

**F** **C** **G**

gods love Nu-bi-a, the beau-ti-ful, the gold - en The ra-di-ant, the fer - tile, the

**NUBIANS:**

Hmm Hmm Hmm Hmm Hmm Hmm

C Dm/C C/E Fm C/E

gentle and the blessed The pain of Nu-bi-a is on-ly of the mo-ment The

Hmm Hmm Hmm Hmm Hmm Hmm Hmm

D G C/G G F

des-o-late, the suf-fer-ing, the plun-dered, the op-pressed -

**NEHEBKA:**

The gods love Nu-bi-a, their

Hmm Hmm Hmm Hmm Hmm

C G C

**AIDA:**

The

glo-ri-ous cre-a-tion Their songs roll sweet-ly a-cross the har-vest plain The

Fm



C/E



tears of Nu - bi - a, a pass - ing ab - er - ra - tion They

tears of Nu - bi - a, a pass - ing ab - er - ra - tion They

NUBIANS:

Hmm Hmm

D7



G



wash in - to the riv - er \_\_\_ and are nev - er cried \_ a - gain The

wash in - to the riv - er \_\_\_ and are nev - er cried \_ a - gain The

Hmm nev - er cried a - gain The

F



C



AIDA & NEHEBKA:

gods love Nu - bi - a, we have to keep be - liev - ing Though

NUBIANS:

gods love Nu - bi - a, we have to keep be - liev - ing Though

NUBIANS:

Ooo Ooo

G



C



C/E



Fm



scat-tered and di-vid - ed we are still its heart The fall of Nu-bi - a, e -

scat-tered and di-vid - ed we are still its heart The fall of Nu-bi - a, e -

Ooo Ooo oo oo The fall of Nu-bi - a, e -

C E7 E7/G# Am C/G

phem-er - al and fleet - ing The spir - it al - ways burn - ing though \_ the

phem-er - al and fleet - ing The spir - it al - ways burn - ing though \_ the

phem-er - al and fleet - ing The spir - it al - ways burn - ing though \_ the

F G C

**AIDA:**  
flesh is torn a - part. Take me \_ in my dreams \_ re -

**NEHEBKA:**  
Take me in \_

flesh is torn \_ a - part. Take me in \_

flesh is torn \_ a - part. Take me \_ in my dreams \_ re -

*f*

F Am7

cur-ring Cheer - ful \_\_\_ as a child - hood

my dreams re - cur-ring Cheer - ful as \_\_\_ a

my dreams re - cur-ring Cheer - ful as \_\_\_ a

cur-ring Cheer - ful \_\_\_ as a child - hood

Detailed description: This system contains the first four staves of music. The top staff is a vocal line with lyrics 'cur-ring Cheer - ful \_\_\_ as a child - hood'. The second staff is another vocal line with lyrics 'my dreams re - cur-ring Cheer - ful as \_\_\_ a'. The third staff is a piano accompaniment line with lyrics 'my dreams re - cur-ring Cheer - ful as \_\_\_ a'. The fourth staff is a bass line with lyrics 'cur-ring Cheer - ful \_\_\_ as a child - hood'. Above the first staff are guitar chord diagrams for F and Am7. The piano accompaniment features a melody in the right hand and a bass line in the left hand.

D G C Eb Bb/E

dance In - to one more taste \_ of

child - hood dance \_ In - to one more

child - hood dance \_ In - to one more

dance In - to one more taste \_ of

Detailed description: This system contains the next four staves of music. The top staff is a vocal line with lyrics 'dance In - to one more taste \_ of'. The second staff is another vocal line with lyrics 'child - hood dance \_ In - to one more'. The third staff is a piano accompaniment line with lyrics 'child - hood dance \_ In - to one more'. The fourth staff is a bass line with lyrics 'dance In - to one more taste \_ of'. Above the first staff are guitar chord diagrams for D, G, C, Eb, and Bb/E. The piano accompaniment continues with a melody in the right hand and a bass line in the left hand.

F
F#dim
C/G
G6
G

free-dom                      One more \_ long - ing back - ward glance \_  
 taste \_\_\_\_\_ of free-dom  
 taste \_\_\_\_\_ of free-dom  
 free-dom                      One more \_ long - ing back - ward glance \_

C
F

\_\_\_\_\_                      The gods      love      Nu - bi - a,      the  
 One more long - ing \_ back - ward glance \_      The gods      love      Nu - bi - a,      the  
 One more long - ing \_ back - ward glance \_      The gods      love      Nu - bi - a,      the  
 One more long - ing \_ back - ward glance \_      The gods \_      love \_      Nu - bi - a,





AIDA & NEHEBKA:

beau-ti - ful, the gold - en The ra - di - ant, the fer - tile, the  
 beau-ti - ful, the gold - en The ra - di - ant, the fer - tile, the  
 the beau-ti - ful, the gold - en The ra - di - ant, the fer - tile,



gen-tle and the blessed The pain of Nu - bi - a is  
 gen-tle and the blessed The pain of Nu - bi - a is  
 the gen-tle and the blessed \_ The pain \_ of \_ Nu - bi - a

C/E



D



on - ly of the mo - ment The des - o - late, the suf - fer - ing, the

on - ly of the mo - ment The des - o - late, the suf - fer - ing, the

is on - ly of the mo - ment The des - o - late, the suf - fer -

G



F



AIDA:

plun-dered, the op - pressed \_ The gods love Nu - bi - a, we

plun-dered, the op - pressed \_ The gods love Nu - bi - a, we

plun-dered, the op - pressed \_ The gods love Nu - bi - a, we

ing. the plun-dered, the op - pressed \_ The gods love Nu - bi - a, we



have to keep be - liev - ing      Though scat-tered and di - vid - ed

have to keep be - liev - ing      Though scat-tered and di - vid - ed

have to keep be - liev - ing      Though scat-tered and di - vid - ed

have to keep be - liev - ing      Though scat-tered and di - vid - ed



we are still its heart      The fall of Nu-bi - a,      e - phem-er-al and fleet - ing      The

we are still its heart      The fall of Nu-bi - a,      e - phem-er-al and fleet - ing      The

we are still its heart      The fall of Nu-bi - a,      e - phem-er-al and fleet - ing      The

we are still its heart      The fall of Nu-bi - a,      e - phem-er-al and fleet - ing      The



spir - it al - ways burn - ing though \_ the flesh is torn \_ a - part \_\_\_\_\_ The

spir - it al - ways burn - ing though \_ the flesh is torn \_ a - part \_\_\_\_\_ The

spir - it al - ways burn - ing though \_ the flesh is torn \_ a - part \_\_\_\_\_ The

spir - it al - ways burn - ing though \_ the flesh is torn \_ a - part \_\_\_\_\_ The



N.C.

Freely

*rit.* spir - it al - ways burn - ing though \_ the flesh is torn \_ a - part \_\_\_\_\_

spir - it al - ways burn - ing though \_ the flesh is torn \_

spir - it al - ways burn - ing though \_ the flesh is torn \_

spir - it al - ways burn - ing though \_ the flesh is torn \_

*rit.*

In tempo



*rit.*

One more

Take me in my dreams re - cur - ring One more

Take me in my dreams re - cur - ring One more

Take me in my dreams re - cur - ring One more

Broadly



long - ing back - ward glance.

long - ing back - ward glance.

long - ing back - ward glance.

long - ing back - ward glance.

*ff* *fff*