

Hopelessly Devoted To You

Words and Music by JOHN FARRAR

Moderately slow, in 2

Dm
A
Dm
A
Dm

A
A
C#m 4 fr.

Guess mine is not the first heart
 know I'm just a fool who's
 head is say - in', "Fool, for -

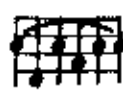
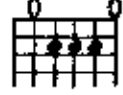
D
Bm7
E7
Amaj7

bro - ken. _ My eyes are not the first _ to cry.
 will - in' _ to sit a - round and wait _ for you.
 get him." _ My heart is say - in', "Don't _ let go.

A6

A

F#7



I'm not the first to know there's
 But, ba - by, can't you see there's
 Hold on to the end." And

C#m7-5/G

F#7

1. Bm7



just no get - tin' o - ver you.
 noth - in' else for me to
 that's what I in - tend to

C#m7

Cm7

Bm7

E7



I

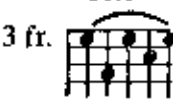
2. Bm7

C#m7

Cm7

Bm7

E7



do? } I'm hope - less - ly de - vot - ed to
 do. }

Dm

A

you. But now there's

cresc.

Gm7 3 fr.

no - where to hide _____ since you pushed my love a - side. _____

f

C7 3 fr.

F

Fmaj7

I'm out _____ of my head,

A07

D7-9 4 fr.

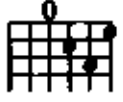
Gm7 3 fr.

hope - less - ly de - vot - ed _____ to you, _____

C7-9

Dm

C#+



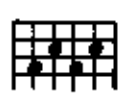
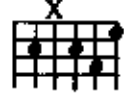
hope - less - ly de - vot - ed to you,

Dm/C

Dm/B

Gm7

C7-9



To Coda 3 fr.

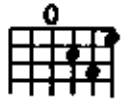
hope - less - ly de - vot - ed to

decresc.

Dm

A

D. S. 3/8 (no repeats) al Coda



you. My

mf

Coda

Gm7

C7-9

Bbm

F



hope - less - ly de - vot - ed to you.