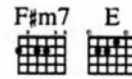


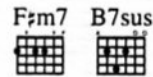
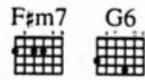
# CHANGE THE WORLD

Words and Music by  
TOMMY SIMS, GORDON KENNEDY  
and WAYNE KIRKPATRICK

Moderately slow  $\text{♩} = 96$



*mf*

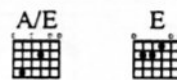
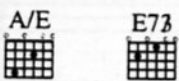


Verse:



1. If I could reach the stars, —  
2. If I could be a king, —

I'd pull one down for you, —  
e - ven for a day, —

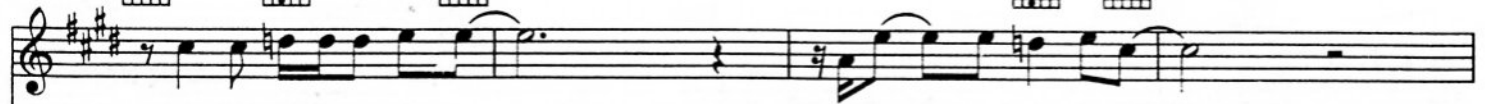


shine it on my heart —  
I'd take you as my queen. —

so you could see the truth, —  
I'd have it no oth-er way. —

Change the World - 4 - 1

© 1996 Universal - MCA Music Publishing, A Division of Universal Studios, Inc.,  
Universal - PolyGram International Publishing, Inc., Sondance Kid Music,  
BMG Songs, Inc. and Careers - BMG Music Publishing, Inc.  
All Rights for Sondance Kid Music Controlled and Administered by  
Universal - PolyGram International Publishing, Inc.  
All Rights Reserved



that this love I have in - side\_\_\_  
And our love would rule\_\_\_

is ev - ery-thing it seems...  
in this king-dom we had made...



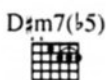
But for now, I find\_\_\_  
Till then I'll be a fool,\_\_\_

it's on - ly in my\_ dreams...  
wish-ing for the\_ day\_\_\_

that I can }  
that I can }

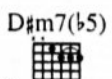


§ Chorus:



change\_\_\_ the world...

I would be\_\_\_ the sun-light in your u - ni-verse...



You would think\_ my love was real - ly some - thing\_ good,\_ ba - by, if I\_\_\_ could\_



1. Gdim7 B7sus/F#



Musical staff with treble clef, key signature of two sharps (F# and C#), and a triplet of eighth notes. Lyrics: "change the world." with a long line under "change" and a shorter line under "the world."

Piano accompaniment for the first system, including treble and bass staves with chords and a triplet of eighth notes.

2.



Musical staff with treble clef, key signature of two sharps, and a triplet of eighth notes. Lyrics: "change the world. Ba - by," with a long line under "change" and a shorter line under "the world."

Piano accompaniment for the second system, including treble and bass staves with chords and a triplet of eighth notes.

Gdim7 B7sus/F#



Musical staff with treble clef, key signature of two sharps, and a triplet of eighth notes. Lyrics: "if I could change the world." with a long line under "change" and a shorter line under "the world."

Piano accompaniment for the third system, including treble and bass staves with chords and a triplet of eighth notes.



Musical staff with treble clef, key signature of two sharps, and a triplet of eighth notes.


Piano accompaniment for the fourth system, including treble and bass staves with chords and a triplet of eighth notes.

F#m7

G#7



I could

 Coda

Gdim7

B7sus/F#

A

E/G#

Gdim7

B7sus/F#

change. ba - by, if I could change. ba - by,

Gdim7

G(9)

A

E/G#

if I could change the world.

E

F#m7

G6

F#m7

E

*rit.*