

**A  
"SINGING"  
APPROACH  
TO THE TROMBONE  
(and other Brass)**

1995 Revised Edition



by **Charles G. Vernon**  
**Bass Trombonist, Chicago Symphony Orchestra**

---

 ATLANTA BRASS SOCIETY PRESS

\$20

## BREATHING

As for breathing, always remember *two* basic things: (1) SIT TALL and (2) SUCK AIR from the mouth, *not* the body. This will help to realize and use the full lung capacity. Several exercises designed to loosen and relax the breathing apparatus can be found on page 35.

## BUZZING THE MOUTHPIECE

Mouthpiece buzzing is a very important part of playing the trombone, or any other brass instrument. It allows the player to produce music with the lips (singing with the lips as if they were vocal cords) without having to deal with any of the technical problems associated with the trombone itself. After practicing the mouthpiece enough so that buzzing is fairly easy, it is important that the player spend most of his mouthpiece time buzzing the actual music to be played — Rochut etudes, ballads, etc., as well as nursery rhyme tunes that can be played (sung) off the top of the head.

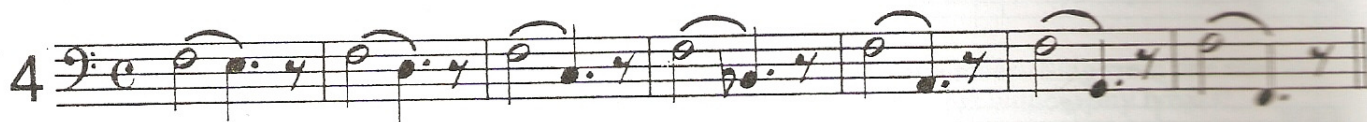
To begin mouthpiece practice, buzz first in the middle range, and extend in both directions. Make the high and low registers sound as free and easy as the middle range. Remember that the buzz is resonant like the human voice. Do not force the lips to buzz too high or loud -- control the buzz with the speed of the air. Always strive for a focused, centered, free sounding buzz in all registers. Using a lip vibrato helps to focus the sound. As soon as the mouthpiece is put into the horn, the resistance of the buzz will change. This is not of major concern and certainly not enough to *not* buzz the mouthpiece. Remember -- it is the approach that is important.

## CONCEPT OF SOUND

Imagine, in the depths of your mind, what you think the greatest trombone sound in the world would be like. Use adjectives to describe this sound -- beautiful, singing, fat, clear, rich, full, smooth, round, dark, centered, warm, etc.



The breathing tube may be used in the rest to aid in keeping the throat as open as possible. Use the air as fuel to continue the sound. Make each note smoother and richer than the last. Articulate these with a "dah" or "doo" syllable, when the tongue is needed. Repeat the exercise until the sound produced is the same as the imaginary sound in your head.



Once again, use the imaginary "greatest trombone sound" as a goal to aim for. Smoothness in the change of note is of importance here. Try to hear the trombone sound in your head "singing" the exercises as you play them. Remember to CONCENTRATE on each and every note! Repeat the exercises in all keys (major and minor) and in all octaves.

Moderately slow

6

*mf/f*

The key to this one is to always suck in the same amount of air during the silences, i.e. fill up over the length of 4 beats, over 3, over 2, and over 1.

The following studies are a continuation of singing one note at a time. Use the first note for the first note and then move down all positions as needed.

7

1 2 1 2 3 1 2 3 4 1 2 3 4 5

1 2 3 4 5 6 1 2 3 4 5 6 7 etc.

1 2 3 4 5 6 7

Remember— Sing from one note to the next without any breaks!

1 2 1 2 3 1 2 3 4 etc.

5 6 7

7 6 5 4 3 2 1 4 5 6 7

1 2 3 4 5 6 7 7 6 5 4 3 2 1

7 7 6

6

6 v 7



4 5 6 5 4 b3 3 2 1

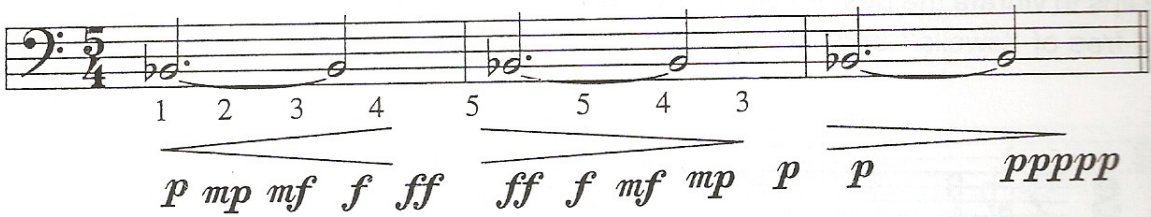
1 2vv 3 4 b4 6 7

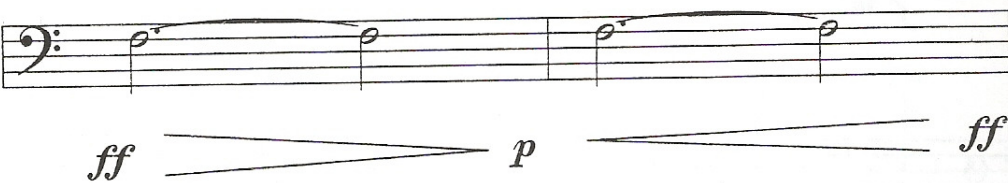
Note:  
 Many possibilities exist. Try starting on different partials and positions, always slurring with a GREAT sound.

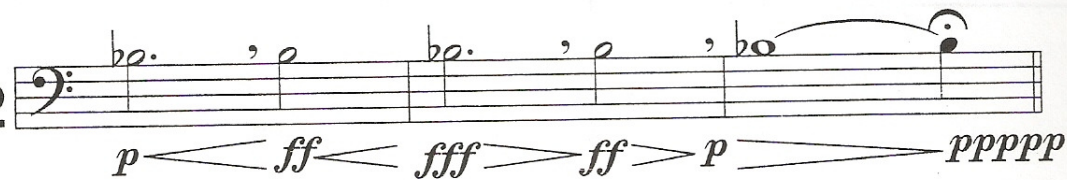




While playing these exercises, strive to maintain the same basic embouchure setting. All that changes during a  or  should be the *speed* of the air. To play louder, simply speed up the airstream. If, for example, the air for a *pp* note travels at 5 mph., the air for a *ff* note might travel at 60 mph. The airstream must, however, remain very intense at the lower speeds. When playing these exercises, try to achieve the effect of a stereo's volume being slowly turned up and down. Play each of these over the entire range of the trombone.

10 

11 

12 

13 

Strive to take as quick and relaxed a breath as possible.

$\text{♩} = 50$  Slow, beautiful even sounds

14

*pp p mp mf f ff fff ff f*

*mf mp p pp ppp pppp ppppp*

Keep the same beautiful sound!

*ff*

3 3

Slow tempo with a beautiful sound

15

*f f mf mf*



*mp mp p p*

*pp f pp pppp*

Do these on many different notes in all registers

This exercise should be thought of as being one beautiful sound followed by another, glued cleanly together, and riding on top of a stream of steadily flowing air.

16

Do this exercise in all keys and octaves, all dynamics (*pp* - *ff*).  and  may also be added. When making a crescendo, think of steadily increasing air. Relate the speed of the air to mph., as mentioned before.

Play the following exercises as indicated below. Use different variations if desired.

	1	2	3	4
ARTICULATION	tongued	slurred	slurred	slurred
DIRECTION	17	17	18	18
DYNAMICS	<i>ff</i>	<i>mf</i>	<i>f</i>	<i>p</i>

Be certain that the sound is even, smooth and relaxed throughout. Buzz the mouthpiece to help "sticky" notes.

17

18

All Even, Matching Sounds

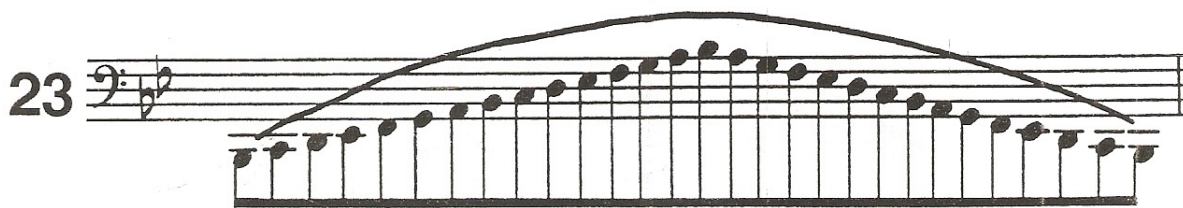
19

The musical exercise consists of two staves. The first staff begins with a bass clef and a key signature of one flat (B-flat). It contains four measures of eighth-note patterns, each with a slur and a tie to the next measure. The second staff begins with a treble clef and the same key signature. It contains four measures of eighth-note patterns, also with slurs and ties, alternating with the first staff. The overall pattern is a sequence of eighth notes: G2, A2, Bb2, C3, D3, E3, F3, G3, A3, Bb3, C4, D4, E4, F4, G4, A4, Bb4, C5, D5, E5, F5, G5, A5, Bb5, C6, D6, E6, F6, G6, A6, Bb6, C7, D7, E7, F7, G7, A7, Bb7, C8, D8, E8, F8, G8, A8, Bb8, C9, D9, E9, F9, G9, A9, Bb9, C10, D10, E10, F10, G10, A10, Bb10, C11, D11, E11, F11, G11, A11, Bb11, C12, D12, E12, F12, G12, A12, Bb12, C13, D13, E13, F13, G13, A13, Bb13, C14, D14, E14, F14, G14, A14, Bb14, C15, D15, E15, F15, G15, A15, Bb15, C16, D16, E16, F16, G16, A16, Bb16, C17, D17, E17, F17, G17, A17, Bb17, C18, D18, E18, F18, G18, A18, Bb18, C19, D19, E19, F19, G19, A19, Bb19, C20, D20, E20, F20, G20, A20, Bb20, C21, D21, E21, F21, G21, A21, Bb21, C22, D22, E22, F22, G22, A22, Bb22, C23, D23, E23, F23, G23, A23, Bb23, C24, D24, E24, F24, G24, A24, Bb24, C25, D25, E25, F25, G25, A25, Bb25, C26, D26, E26, F26, G26, A26, Bb26, C27, D27, E27, F27, G27, A27, Bb27, C28, D28, E28, F28, G28, A28, Bb28, C29, D29, E29, F29, G29, A29, Bb29, C30, D30, E30, F30, G30, A30, Bb30, C31, D31, E31, F31, G31, A31, Bb31, C32, D32, E32, F32, G32, A32, Bb32, C33, D33, E33, F33, G33, A33, Bb33, C34, D34, E34, F34, G34, A34, Bb34, C35, D35, E35, F35, G35, A35, Bb35, C36, D36, E36, F36, G36, A36, Bb36, C37, D37, E37, F37, G37, A37, Bb37, C38, D38, E38, F38, G38, A38, Bb38, C39, D39, E39, F39, G39, A39, Bb39, C40, D40, E40, F40, G40, A40, Bb40, C41, D41, E41, F41, G41, A41, Bb41, C42, D42, E42, F42, G42, A42, Bb42, C43, D43, E43, F43, G43, A43, Bb43, C44, D44, E44, F44, G44, A44, Bb44, C45, D45, E45, F45, G45, A45, Bb45, C46, D46, E46, F46, G46, A46, Bb46, C47, D47, E47, F47, G47, A47, Bb47, C48, D48, E48, F48, G48, A48, Bb48, C49, D49, E49, F49, G49, A49, Bb49, C50, D50, E50, F50, G50, A50, Bb50, C51, D51, E51, F51, G51, A51, Bb51, C52, D52, E52, F52, G52, A52, Bb52, C53, D53, E53, F53, G53, A53, Bb53, C54, D54, E54, F54, G54, A54, Bb54, C55, D55, E55, F55, G55, A55, Bb55, C56, D56, E56, F56, G56, A56, Bb56, C57, D57, E57, F57, G57, A57, Bb57, C58, D58, E58, F58, G58, A58, Bb58, C59, D59, E59, F59, G59, A59, Bb59, C60, D60, E60, F60, G60, A60, Bb60, C61, D61, E61, F61, G61, A61, Bb61, C62, D62, E62, F62, G62, A62, Bb62, C63, D63, E63, F63, G63, A63, Bb63, C64, D64, E64, F64, G64, A64, Bb64, C65, D65, E65, F65, G65, A65, Bb65, C66, D66, E66, F66, G66, A66, Bb66, C67, D67, E67, F67, G67, A67, Bb67, C68, D68, E68, F68, G68, A68, Bb68, C69, D69, E69, F69, G69, A69, Bb69, C70, D70, E70, F70, G70, A70, Bb70, C71, D71, E71, F71, G71, A71, Bb71, C72, D72, E72, F72, G72, A72, Bb72, C73, D73, E73, F73, G73, A73, Bb73, C74, D74, E74, F74, G74, A74, Bb74, C75, D75, E75, F75, G75, A75, Bb75, C76, D76, E76, F76, G76, A76, Bb76, C77, D77, E77, F77, G77, A77, Bb77, C78, D78, E78, F78, G78, A78, Bb78, C79, D79, E79, F79, G79, A79, Bb79, C80, D80, E80, F80, G80, A80, Bb80, C81, D81, E81, F81, G81, A81, Bb81, C82, D82, E82, F82, G82, A82, Bb82, C83, D83, E83, F83, G83, A83, Bb83, C84, D84, E84, F84, G84, A84, Bb84, C85, D85, E85, F85, G85, A85, Bb85, C86, D86, E86, F86, G86, A86, Bb86, C87, D87, E87, F87, G87, A87, Bb87, C88, D88, E88, F88, G88, A88, Bb88, C89, D89, E89, F89, G89, A89, Bb89, C90, D90, E90, F90, G90, A90, Bb90, C91, D91, E91, F91, G91, A91, Bb91, C92, D92, E92, F92, G92, A92, Bb92, C93, D93, E93, F93, G93, A93, Bb93, C94, D94, E94, F94, G94, A94, Bb94, C95, D95, E95, F95, G95, A95, Bb95, C96, D96, E96, F96, G96, A96, Bb96, C97, D97, E97, F97, G97, A97, Bb97, C98, D98, E98, F98, G98, A98, Bb98, C99, D99, E99, F99, G99, A99, Bb99, C100, D100, E100, F100, G100, A100, Bb100, C101, D101, E101, F101, G101, A101, Bb101, C102, D102, E102, F102, G102, A102, Bb102, C103, D103, E103, F103, G103, A103, Bb103, C104, D104, E104, F104, G104, A104, Bb104, C105, D105, E105, F105, G105, A105, Bb105, C106, D106, E106, F106, G106, A106, Bb106, C107, D107, E107, F107, G107, A107, Bb107, C108, D108, E108, F108, G108, A108, Bb108, C109, D109, E109, F109, G109, A109, Bb109, C110, D110, E110, F110, G110, A110, Bb110, C111, D111, E111, F111, G111, A111, Bb111, C112, D112, E112, F112, G112, A112, Bb112, C113, D113, E113, F113, G113, A113, Bb113, C114, D114, E114, F114, G114, A114, Bb114, C115, D115, E115, F115, G115, A115, Bb115, C116, D116, E116, F116, G116, A116, Bb116, C117, D117, E117, F117, G117, A117, Bb117, C118, D118, E118, F118, G118, A118, Bb118, C119, D119, E119, F119, G119, A119, Bb119, C120, D120, E120, F120, G120, A120, Bb120, C121, D121, E121, F121, G121, A121, Bb121, C122, D122, E122, F122, G122, A122, Bb122, C123, D123, E123, F123, G123, A123, Bb123, C124, D124, E124, F124, G124, A124, Bb124, C125, D125, E125, F125, G125, A125, Bb125, C126, D126, E126, F126, G126, A126, Bb126, C127, D127, E127, F127, G127, A127, Bb127, C128, D128, E128, F128, G128, A128, Bb128, C129, D129, E129, F129, G129, A129, Bb129, C130, D130, E130, F130, G130, A130, Bb130, C131, D131, E131, F131, G131, A131, Bb131, C132, D132, E132, F132, G132, A132, Bb132, C133, D133, E133, F133, G133, A133, Bb133, C134, D134, E134, F134, G134, A134, Bb134, C135, D135, E135, F135, G135, A135, Bb135, C136, D136, E136, F136, G136, A136, Bb136, C137, D137, E137, F137, G137, A137, Bb137, C138, D138, E138, F138, G138, A138, Bb138, C139, D139, E139, F139, G139, A139, Bb139, C140, D140, E140, F140, G140, A140, Bb140, C141, D141, E141, F141, G141, A141, Bb141, C142, D142, E142, F142, G142, A142, Bb142, C143, D143, E143, F143, G143, A143, Bb143, C144, D144, E144, F144, G144, A144, Bb144, C145, D145, E145, F145, G145, A145, Bb145, C146, D146, E146, F146, G146, A146, Bb146, C147, D147, E147, F147, G147, A147, Bb147, C148, D148, E148, F148, G148, A148, Bb148, C149, D149, E149, F149, G149, A149, Bb149, C150, D150, E150, F150, G150, A150, Bb150, C151, D151, E151, F151, G151, A151, Bb151, C152, D152, E152, F152, G152, A152, Bb152, C153, D153, E153, F153, G153, A153, Bb153, C154, D154, E154, F154, G154, A154, Bb154, C155, D155, E155, F155, G155, A155, Bb155, C156, D156, E156, F156, G156, A156, Bb156, C157, D157, E157, F157, G157, A157, Bb157, C158, D158, E158, F158, G158, A158, Bb158, C159, D159, E159, F159, G159, A159, Bb159, C160, D160, E160, F160, G160, A160, Bb160, C161, D161, E161, F161, G161, A161, Bb161, C162, D162, E162, F162, G162, A162, Bb162, C163, D163, E163, F163, G163, A163, Bb163, C164, D164, E164, F164, G164, A164, Bb164, C165, D165, E165, F165, G165, A165, Bb165, C166, D166, E166, F166, G166, A166, Bb166, C167, D167, E167, F167, G167, A167, Bb167, C168, D168, E168, F168, G168, A168, Bb168, C169, D169, E169, F169, G169, A169, Bb169, C170, D170, E170, F170, G170, A170, Bb170, C171, D171, E171, F171, G171, A171, Bb171, C172, D172, E172, F172, G172, A172, Bb172, C173, D173, E173, F173, G173, A173, Bb173, C174, D174, E174, F174, G174, A174, Bb174, C175, D175, E175, F175, G175, A175, Bb175, C176, D176, E176, F176, G176, A176, Bb176, C177, D177, E177, F177, G177, A177, Bb177, C178, D178, E178, F178, G178, A178, Bb178, C179, D179, E179, F179, G179, A179, Bb179, C180, D180, E180, F180, G180, A180, Bb180, C181, D181, E181, F181, G181, A181, Bb181, C182, D182, E182, F182, G182, A182, Bb182, C183, D183, E183, F183, G183, A183, Bb183, C184, D184, E184, F184, G184, A184, Bb184, C185, D185, E185, F185, G185, A185, Bb185, C186, D186, E186, F186, G186, A186, Bb186, C187, D187, E187, F187, G187, A187, Bb187, C188, D188, E188, F188, G188, A188, Bb188, C189, D189, E189, F189, G189, A189, Bb189, C190, D190, E190, F190, G190, A190, Bb190, C191, D191, E191, F191, G191, A191, Bb191, C192, D192, E192, F192, G192, A192, Bb192, C193, D193, E193, F193, G193, A193, Bb193, C194, D194, E194, F194, G194, A194, Bb194, C195, D195, E195, F195, G195, A195, Bb195, C196, D196, E196, F196, G196, A196, Bb196, C197, D197, E197, F197, G197, A197, Bb197, C198, D198, E198, F198, G198, A198, Bb198, C199, D199, E199, F199, G199, A199, Bb199, C200, D200, E200, F200, G200, A200, Bb200, C201, D201, E201, F201, G201, A201, Bb201, C202, D202, E202, F202, G202, A202, Bb202, C203, D203, E203, F203, G203, A203, Bb203, C204, D204, E204, F204, G204, A204, Bb204, C205, D205, E205, F205, G205, A205, Bb205, C206, D206, E206, F206, G206, A206, Bb206, C207, D207, E207, F207, G207, A207, Bb207, C208, D208, E208, F208, G208, A208, Bb208, C209, D209, E209, F209, G209, A209, Bb209, C210, D210, E210, F210, G210, A210, Bb210, C211, D211, E211, F211, G211, A211, Bb211, C212, D212, E212, F212, G212, A212, Bb212, C213, D213, E213, F213, G213, A213, Bb213, C214, D214, E214, F214, G214, A214, Bb214, C215, D215, E215, F215, G215, A215, Bb215, C216, D216, E216, F216, G216, A216, Bb216, C217, D217, E217, F217, G217, A217, Bb217, C218, D218, E218, F218, G218, A218, Bb218, C219, D219, E219, F219, G219, A219, Bb219, C220, D220, E220, F220, G220, A220, Bb220, C221, D221, E221, F221, G221, A221, Bb221, C222, D222, E222, F222, G222, A222, Bb222, C223, D223, E223, F223, G223, A223, Bb223, C224, D224, E224, F224, G224, A224, Bb224, C225, D225, E225, F225, G225, A225, Bb225, C226, D226, E226, F226, G226, A226, Bb226, C227, D227, E227, F227, G227, A227, Bb227, C228, D228, E228, F228, G228, A228, Bb228, C229, D229, E229, F229, G229, A229, Bb229, C230, D230, E230, F230, G230, A230, Bb230, C231, D231, E231, F231, G231, A231, Bb231, C232, D232, E232, F232, G232, A232, Bb232, C233, D233, E233, F233, G233, A233, Bb233, C234, D234, E234, F234, G234, A234, Bb234, C235, D235, E235, F235, G235, A235, Bb235, C236, D236, E236, F236, G236, A236, Bb236, C237, D237, E237, F237, G237, A237, Bb237, C238, D238, E238, F238, G238, A238, Bb238, C239, D239, E239, F239, G239, A239, Bb239, C240, D240, E240, F240, G240, A240, Bb240, C241, D241, E241, F241, G241, A241, Bb241, C242, D242, E242, F242, G242, A242, Bb242, C243, D243, E243, F243, G243, A243, Bb243, C244, D244, E244, F244, G244, A244, Bb244, C245, D245, E245, F245, G245, A245, Bb245, C246, D246, E246, F246, G246, A246, Bb246, C247, D247, E247, F247, G247, A247, Bb247, C248, D248, E248, F248, G248, A248, Bb248, C249, D249, E249, F249, G249, A249, Bb249, C250, D250, E250, F250, G250, A250, Bb250, C251, D251, E251, F251, G251, A251, Bb251, C252, D252, E252, F252, G252, A252, Bb252, C253, D253, E253, F253, G253, A253, Bb253, C254, D254, E254, F254, G254, A254, Bb254, C255, D255, E255, F255, G255, A255, Bb255, C256, D256, E256, F256, G256, A256, Bb256, C257, D257, E257, F257, G257, A257, Bb257, C258, D258, E258, F258, G258, A258, Bb258, C259, D259, E259, F259, G259, A259, Bb259, C260, D260, E260, F260, G260, A260, Bb260, C261, D261, E261, F261, G261, A261, Bb261, C262, D262, E262, F262, G262, A262, Bb262, C263, D263, E263, F263, G263, A263, Bb263, C264, D264, E264, F264, G264, A264, Bb264, C265, D265, E265, F265, G265, A265, Bb265, C266, D266, E266, F266, G266, A266, Bb266, C267, D267, E267, F267, G267, A267, Bb267, C268, D268, E268, F268, G268, A268, Bb268, C269, D269, E269, F269, G269, A269, Bb269, C270, D270, E270, F270, G270, A270, Bb270, C271, D271, E271, F271, G271, A271, Bb271, C272, D272, E272, F272, G272, A272, Bb272, C273, D273, E273, F273, G273, A273, Bb273, C274, D274, E274, F274, G274, A274, Bb274, C275, D275, E275, F275, G275, A275, Bb275, C276, D276, E276, F276, G276, A276, Bb276, C277, D277, E277, F277, G277, A277, Bb277, C278, D278, E278, F278, G278, A278, Bb278, C279, D279, E279, F279, G279, A279, Bb279, C280, D280, E280, F280, G280, A280, Bb280, C281, D281, E281, F281, G281, A281, Bb281, C282, D282, E282, F282, G282, A282, Bb282, C283, D283, E283, F283, G283, A283, Bb283, C284, D284, E284, F284, G284, A284, Bb284, C285, D285, E285, F285, G285, A285, Bb285, C286, D286, E286, F286, G286, A286, Bb286, C287, D287, E287, F287, G287, A287, Bb287, C288, D288, E288, F288, G288, A288, Bb288, C289, D289, E289, F289, G289, A289, Bb289, C290, D290, E290, F290, G290, A290, Bb290, C291, D291, E291, F291, G291, A291, Bb291, C292, D292, E292, F292, G292, A292, Bb292, C293, D293, E293, F293, G293, A293, Bb293, C294, D294, E294, F294, G294, A294, Bb294, C295, D295, E295, F295, G295, A295, Bb295, C296, D296, E296, F296, G296, A296, Bb296, C297, D297, E297, F297, G297, A297, Bb297, C298, D298, E298, F298, G298, A298, Bb298, C299, D299, E299, F299, G299, A299, Bb299, C300, D300, E300, F300, G300, A300, Bb300, C301, D301, E301, F301, G301, A301, Bb301, C302, D302, E302, F302, G302, A302, Bb302, C303, D303, E303, F303, G303, A303, Bb303, C304, D304, E304, F304, G304, A304, Bb304, C305, D305, E305, F305, G305, A305, Bb305, C306, D306, E306, F306, G306, A306, Bb306, C307, D307, E307, F307, G307, A307, Bb307, C308, D308, E308, F308, G308, A308, Bb308, C309, D309, E309, F309, G309, A309, Bb309, C310, D310, E310, F310, G310, A310, Bb310, C311, D311, E311, F311, G311, A311, Bb311, C312, D312, E312, F312, G312, A312, Bb312, C313, D313, E313, F313, G313, A313, Bb313, C314, D314, E314, F314, G314, A314, Bb314, C315, D315, E315, F315, G315, A315, Bb315, C316, D316, E316, F316, G316, A316, Bb316, C317, D317, E317, F317, G317, A317, Bb317, C318, D318, E318, F318, G318, A318, Bb318, C319, D319, E319, F319, G319, A319, Bb319, C320, D320, E320, F320, G320, A320, Bb320, C321, D321, E321, F321, G321, A321, Bb321, C322, D322, E322, F322, G322, A322, Bb322, C323, D323, E323, F323, G323, A323, Bb323, C324, D324, E324, F324, G324, A324, Bb324, C325, D325, E325, F325, G325, A325, Bb325, C326, D326, E326, F326, G326, A326, Bb326, C327, D327, E327, F327, G327, A327, Bb327, C328, D328, E328, F328, G328, A328, Bb328, C329, D329, E329, F329, G329, A329, Bb329, C330, D330, E330, F330, G330, A330, Bb330, C331, D331, E331, F331, G331, A331, Bb331, C332, D332, E332, F332, G332, A332, Bb332, C333, D333, E333, F333, G333, A333, Bb333, C334, D334, E334, F334, G334, A334, Bb334, C335, D335, E335, F335, G335, A335, Bb335, C336, D336, E336, F336, G336, A336, Bb336, C337, D337, E337, F337, G337, A337, Bb337, C338, D338, E338, F338, G338, A338, Bb338, C339, D339, E339, F339, G339, A339, Bb339, C340, D340, E340, F340, G340, A340, Bb340, C341, D341, E341, F341, G341, A341, Bb341, C342, D342, E342, F342, G342, A342, Bb342, C343, D343, E343, F343, G343, A343, Bb343, C344, D344, E344, F344, G344, A344, Bb344, C345, D345, E345, F345, G345, A345, Bb345, C346, D346, E346, F346, G346, A346, Bb346, C347, D347, E347, F347, G347, A347, Bb347, C348, D348, E348, F348, G348, A348, Bb348, C349, D349, E349, F349, G349, A349, Bb349, C350, D350, E350, F350, G350, A350, Bb350, C351, D351, E351, F351, G351, A351, Bb351, C352, D352, E352, F352, G352, A352, Bb352, C353, D353, E353, F353, G353, A353, Bb353, C354, D354, E354, F354, G354, A354, Bb354, C355, D355, E355, F355, G355, A355, Bb355, C356, D356, E356, F356, G356, A356, Bb356, C357, D357, E357, F357, G357, A357, Bb357, C358, D358, E358, F358, G358, A358, Bb358, C359, D359, E359, F359, G359, A359, Bb359, C360, D360, E

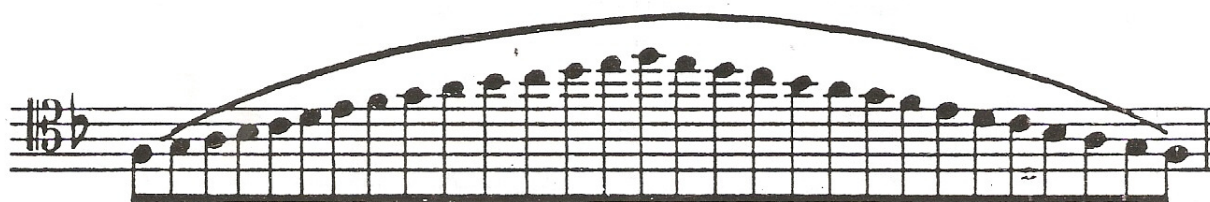
Play in all seven positions. Vary the articulation from liquid slur to very detached. Remember to buzz the mouthpiece when necessary.

20

Play this exercise without the use of the tongue (glissando), starting with a "ho" syllable.  
 Play softly and gently.



Play up chromatically at least to:



Play the following exercises (with the indicated positions), tonguing only the first note of each sequence. Play each one smoothly, evenly and slowly. These may also be played down an octave. Vary the speed of the air.

24

T 2 V 4 V 2 V 4 T 3 V 5 5

T #5 T

T V T 7

Play this exercise both smeared (glissando) and slurred, but very loudly rather than softly. Continue down chromatically as far as possible.

25

Play this exercise both smeared (glissando) and slurred, but very loudly rather than softly. Continue down chromatically as far as possible.

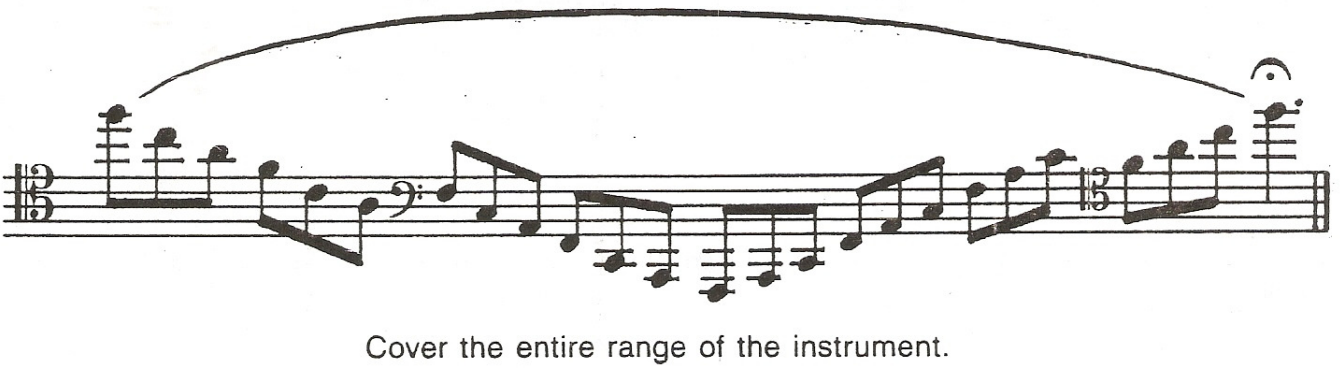
25



Play this exercise both slurred and detached, *p* and *f*. Make the slurred version sound liquid smooth. The detached version should sound like a long string of identical sounding notes -- small bricks of sound.

26 

Continue down chromatically

26A 

Cover the entire range of the instrument.

These studies of intervals of a perfect fourth are invaluable for matching the sound of the upper and lower registers, as well as strengthening the upper range. Play them very smoothly and evenly. Make the upper notes sound easy and relaxed. Play both *p* and *f*.

27 

This one should be slow and soft, making a beautifully effortless, floating sound.

Adagio

28  $\frac{13}{8}$   $\frac{5}{4}$

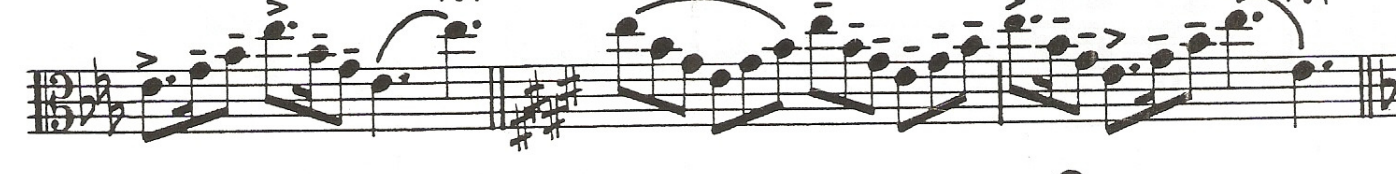
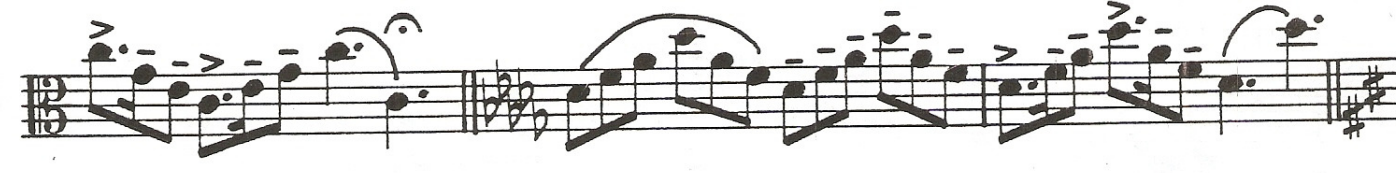
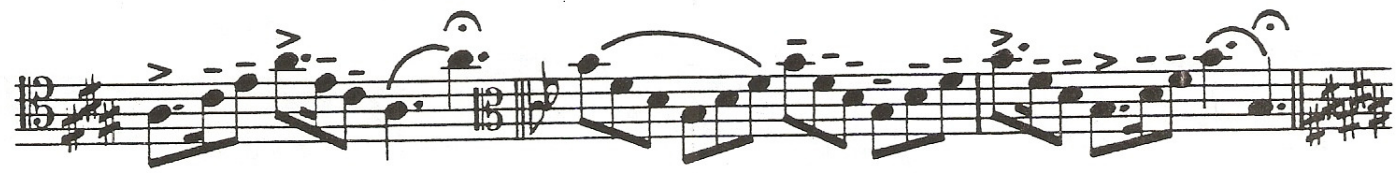
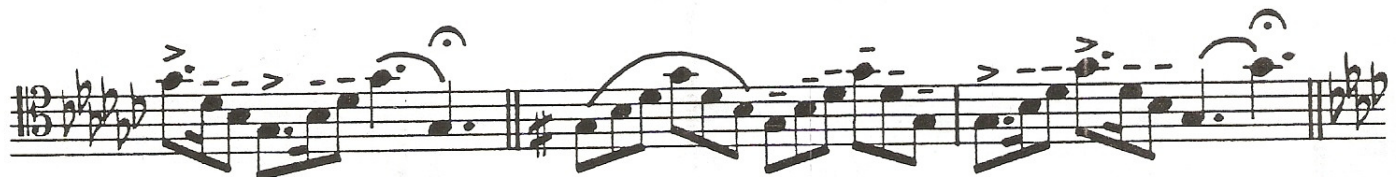
*pp*



Pay careful attention to each and every articulation in the next exercise; make sure they are consistent. Think "beautiful sound" throughout. Vary the dynamics and tempo.

30

Musical exercise 30 is written in bass clef with a 12/8 time signature. The piece consists of nine staves of music. The first staff begins with a key signature of one flat (B-flat) and a 12/8 time signature. The music is characterized by a steady eighth-note pattern with various articulations, including slurs, accents (>), and breath marks (circles with a vertical line). The key signature changes throughout the exercise: the second staff has two sharps (F# and C#), the third has two sharps (F# and C#), the fourth has one flat (B-flat), the fifth has one sharp (F#), the sixth has one flat (B-flat), the seventh has two flats (B-flat and E-flat), the eighth has two sharps (F# and C#), and the ninth has two sharps (F# and C#). The exercise concludes with a final whole note chord in the key of two sharps (F# and C#).



# William Tell Studies

31

*f*

THEN PLAY

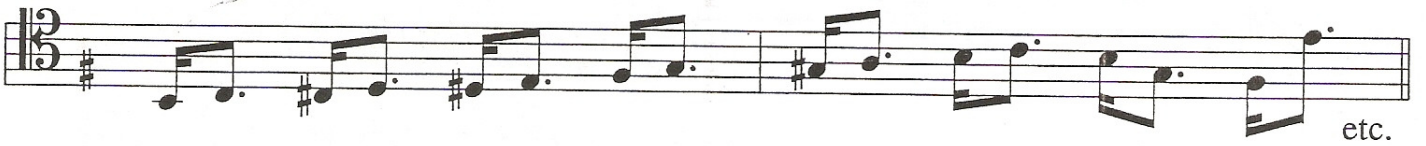
Do each two measures of moving notes like this. Also do variations I, II and III.

MAKE BEAUTIFUL SOUNDS

### VARIATION 1

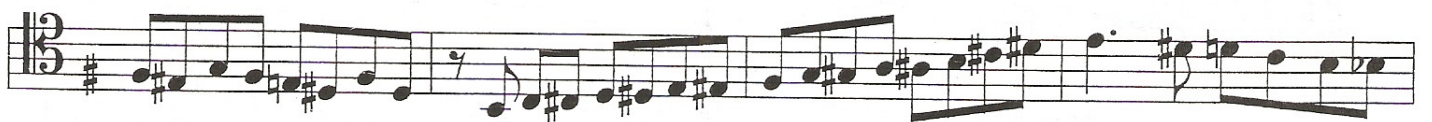


### VARIATION II



To play these variations correctly, you **must** put the slide in the right place!

### VARIATION III



Now play *William Tell* with the security you have gained through these studies.

WILLIAM TELL, OVERTURE  
CHICAGO, ILLINOIS 60604

TROMBONE III

G. ROSSINI

Andante. (♩ = 54)      Allegro. (♩ = 108)

23 A 24      30 B 8      9      10

Viol.

11      12      13      14

C

*ff*

D

*f*      *f*      *f*

E 1 2 3 4 5 6 7 8

1      1      1

*p*      *p*

1 2 3 4 5 6 7      5 6 7 8 4      20 F 13 G 17

*p*      \* *ppp* Fag. II.

Die mit \* bezeichneten kleinen Noten werden nur dann mitgespielt, wenn die angegebenen Instrumente nicht besetzt sind.



# Die Walküre Studies

①

32

ETC.

②

> > >>> > >>> > > ETC.

③

> ETC.

④

> ETC.

Kill the wab - bit

⑤

> ETC.

⑥

> ETC.

⑦

AS IS!

> ETC.

These (of course) should be done up an octave as well.

Play *pp* through *ff*



# Zarathustra Study

33

*ff*

*ff*

Continue going up until—

*ff*

6

*ff*

5

*ff*

*ff*

*ff*

*ff*

*ff*

Further orchestral studies will be published separately soon.