

**ВИОЛОНЧЕЛЬ**

**АСТОР ПИАЦЦОЛЛА**

**Весна**

**ТАНГО**

ДЛЯ ТРИО

( СКРИПКА, ВИОЛОНЧЕЛЬ, ФОРТЕПИАНО )

**Переложение Хосе Брагато**

Содружество "- А4 -"

1999 г.

# Весна

танго

Виолончель

АСТОР ПИАЦЦОЛЛА

Allegro

Cello [1] *pizz.*  
*mp*

Vcl. [5] *p*

Vcl. [10]

Vcl. [14] *mf*

Vcl. [18]

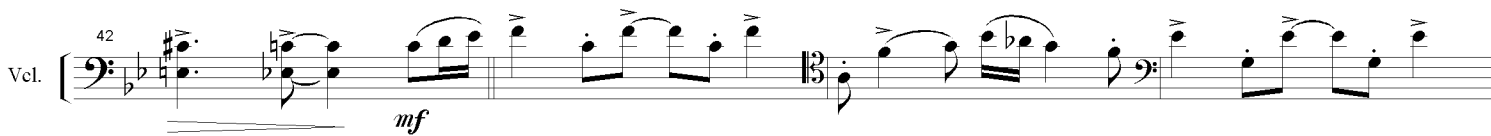
Vcl. [21] *f*

Vcl. [25] *f*

Vcl. [30]

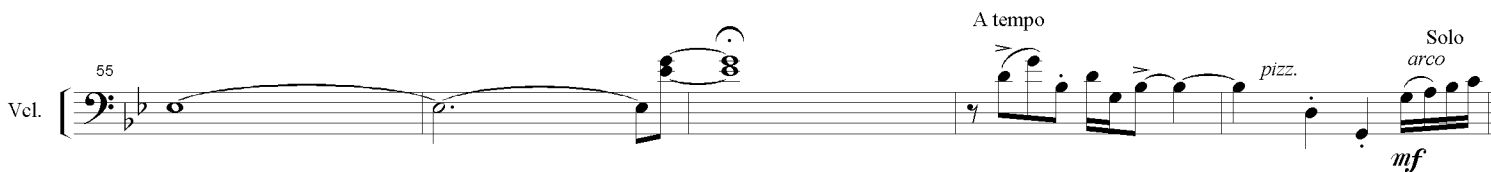
Vcl. 

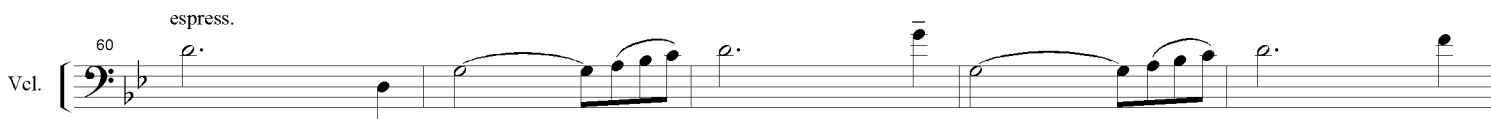
Vcl. 

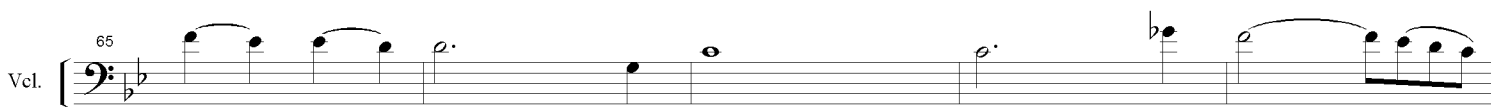
Vcl. 

Vcl. 

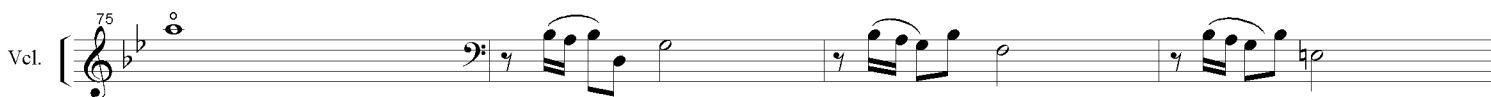
Vcl. 

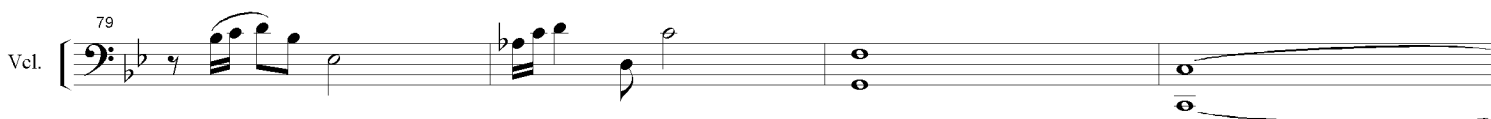
Vcl. 

Vcl. 

Vcl. 

Vcl. 

Vcl. 

Vcl. 

Vcl. Musical staff for Violin, measures 83-87. The staff is in bass clef with a key signature of one flat. It begins with a half note G2, followed by a half note F2. A slur covers measures 84-85, containing a half note E2 and a half note D2. A trill is written over the D2 in measure 86. The piece concludes with a half note C2 in measure 87. A dynamic marking of *p* is placed below the staff.

Tempo 1

Vcl. Musical staff for Violin, measures 88-92. The staff is in bass clef with a key signature of one flat. It begins with a half note G2, followed by a half note F2. A slur covers measures 89-90, containing a half note E2 and a half note D2. The piece concludes with a half note C2 in measure 92. A dynamic marking of *ff* is placed below the staff.

Vcl. Musical staff for Violin, measures 93-96. The staff is in bass clef with a key signature of one flat. It begins with a half note G2, followed by a half note F2. A slur covers measures 94-95, containing a half note E2 and a half note D2. The piece concludes with a half note C2 in measure 96. A dynamic marking of *ff* is placed below the staff.

Vcl. Musical staff for Violin, measures 97-101. The staff is in bass clef with a key signature of one flat. It begins with a half note G2, followed by a half note F2. A slur covers measures 98-99, containing a half note E2 and a half note D2. The piece concludes with a half note C2 in measure 101. A dynamic marking of *f* is placed below the staff.

Vcl. Musical staff for Violin, measures 102-105. The staff is in bass clef with a key signature of one flat. It begins with a half note G2, followed by a half note F2. A slur covers measures 103-104, containing a half note E2 and a half note D2. The piece concludes with a half note C2 in measure 105. A dynamic marking of *f* is placed below the staff.

Vcl. Musical staff for Violin, measures 106-111. The staff is in bass clef with a key signature of one flat. It begins with a half note G2, followed by a half note F2. A slur covers measures 107-108, containing a half note E2 and a half note D2. The piece concludes with a half note C2 in measure 111. A dynamic marking of *ff* is placed below the staff.

Vcl. Musical staff for Violin, measures 112-115. The staff is in bass clef with a key signature of one flat. It begins with a half note G2, followed by a half note F2. A slur covers measures 113-114, containing a half note E2 and a half note D2. The piece concludes with a half note C2 in measure 115. A dynamic marking of *ff* is placed below the staff.

Vcl. Musical staff for Violin, measures 116-119. The staff is in bass clef with a key signature of one flat. It begins with a half note G2, followed by a half note F2. A slur covers measures 117-118, containing a half note E2 and a half note D2. The piece concludes with a half note C2 in measure 119. A dynamic marking of *ff* is placed below the staff.

Vcl. Musical staff for Violin, measures 120-123. The staff is in bass clef with a key signature of one flat. It begins with a half note G2, followed by a half note F2. A slur covers measures 121-122, containing a half note E2 and a half note D2. The piece concludes with a half note C2 in measure 123. A dynamic marking of *fff* is placed below the staff.

Vcl. Musical staff for Violin, measures 124-127. The staff is in bass clef with a key signature of one flat. It begins with a half note G2, followed by a half note F2. A slur covers measures 125-126, containing a half note E2 and a half note D2. The piece concludes with a half note C2 in measure 127. A dynamic marking of *sfz* is placed below the staff.

# Лето

## танго

Виолончель

АСТОР ПИАЦЦОЛЛА

Allegro moderato

Cello

1 8  
*mf*

12  
*cresc.*

16  
*f*

20  
*ff*

24  
*dim. y rit.*

29

*p*

Allegro (♩ = 112)

35  
*p*

40  
*poco assel.*

Piu mosso (♩ = 92)

45

50

Solo

Allegro (♩ = 112)

55

59

Tempo 1 (♩ = 120)

63

accel. ----- y ----- cresc.

ff

67

71

f

5

79

rall. ....

Cadenza

84

Allegro (♩ = 112)

85 *p*

90

95

100 *vibrando* *pp* *rit.*

A tempo

105

109

113 *rall.*

116 *a tempo* *rall.* *p*

121 *cresc. ----- y ----- accel.* *mf*





# Осень

танго

АСТОР ПИАЦЦОЛЛА

Виолончель

Allegro (  $\text{♩} = 120$  )

Cello

1 8  
*mf*

13  
*f*

17  
*mf*

21  
*mf*

25  
*dim.* *rall.*

28 Cadenza *rit. . . . .*

Lento y rubato

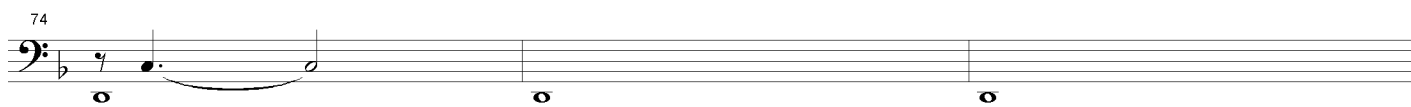
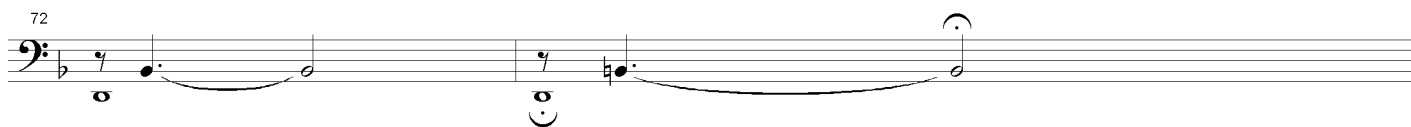
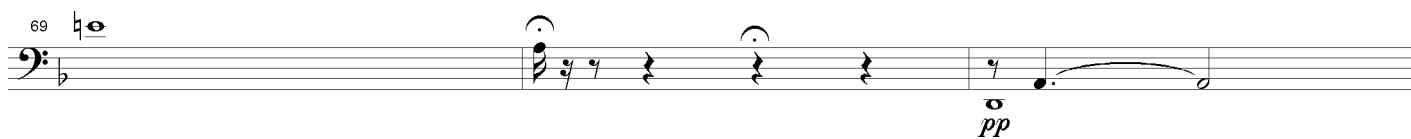
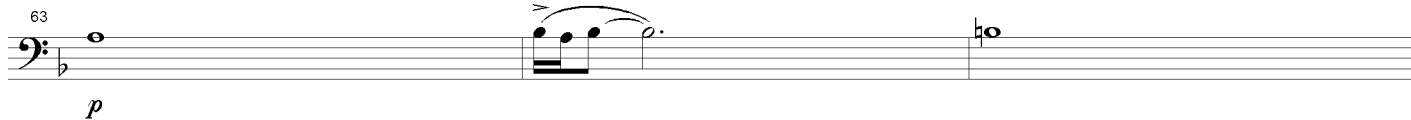
30  
*mf* *molto espress.*



## Cadenza

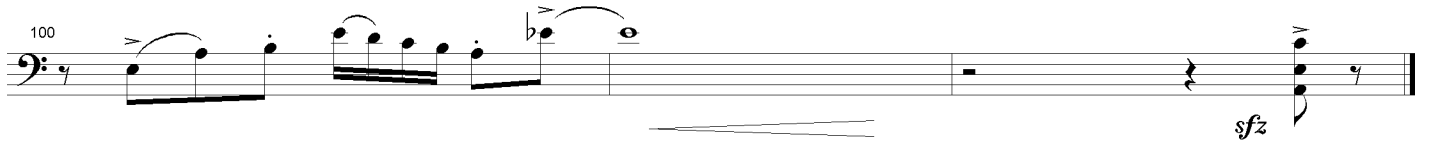
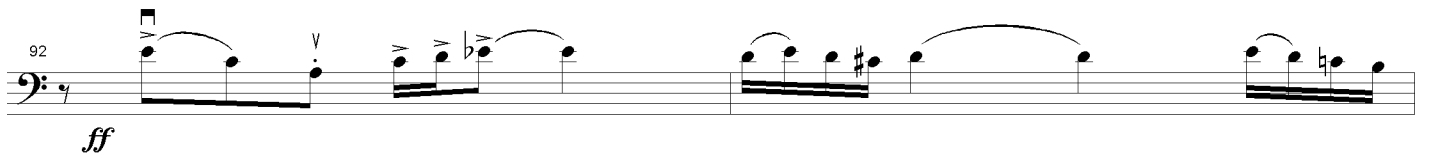
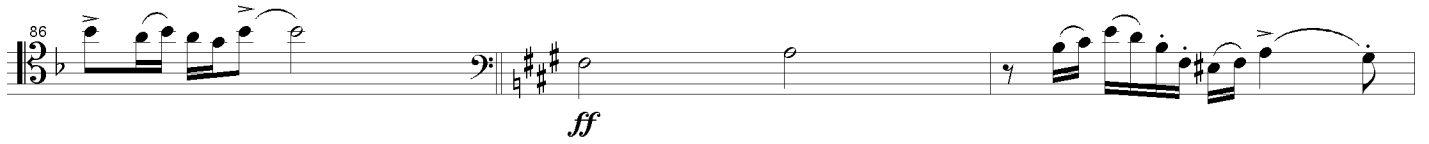


## Lento y rubato



## Allegro (♩ = 120)

*cresc.*



# Зима

танго

Виолончель

АСТОР ПИАЦЦОЛЛА

1 *p* *cresc.*

6 *accel. ...* *mf* *Piu mosso (♩ = 120)*

13 *Cadenza (ad. lib.)* *Allegro (♩ = 120)* *ff* *mf cresc...y...accel...*

30 *Allegro (♩ = 132)* *ff*

36

41

47 *Lento (♩ = 76)* *Solo* *mf espress.*

53 *p*

61 *p*

67 *f* *ff*

73 *mf cresc.* *f* *ff*

81

87 *f*

93 *p*

101 *mf cresc.* *f*

108 *p*

115 *p*

121 *p* *dim.*