

ALL ALONG THE WATCHTOWER

Words and Music BOB DYLAN

Moderate Rock
Tune down 1/2 step

B C#m B A B C#m B A Lead B

mf

Full Full Full Full Full Full Full Full Full

Barely audible

Verse

There must be some kind a way out-ta here

C#m B A B C#m B

said the jo - ker to the thief. There's too much con - fu - sion

7 5 2 2 2 4 2 4 6 4 6 5 7 5

A B C#m B A A B A

(na) I can't get no re - lief.

con't. previous pattern

Tab readers, con't. previous pattern. Slash notation shown in staff above.

2 2 2 2 2 4 2 5 2 4 0 2 4 6 (4) 5 7 5

C#m B A C#m B

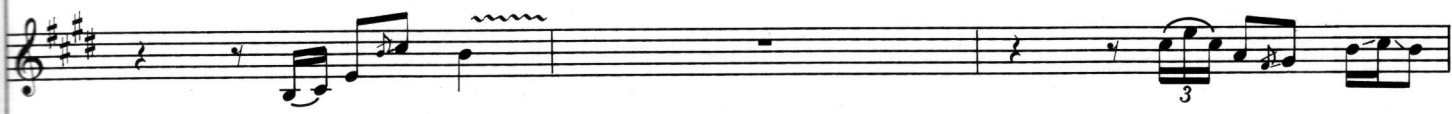
Busi-ness men they ah ah drink my wine plow men dig my earth.

4 6 2 4 4 2 2 4 6 (4) 5 7 6 4 4 6 4 6

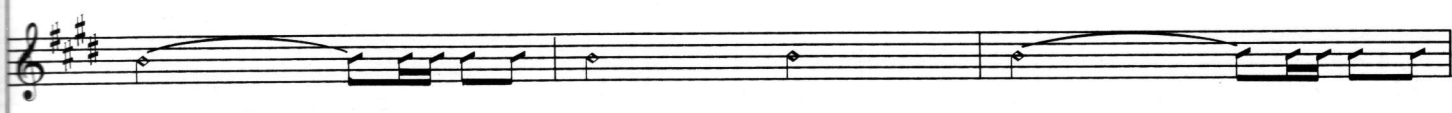
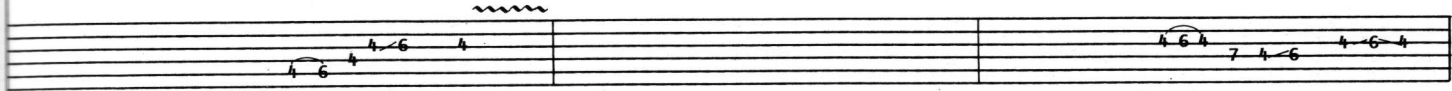
A B A C#m B A B A



(uh) None will lev-el on the vine (uh)



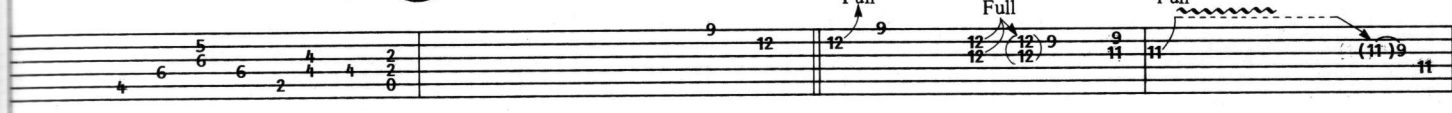
3



C#m B A B A C#m B A B A



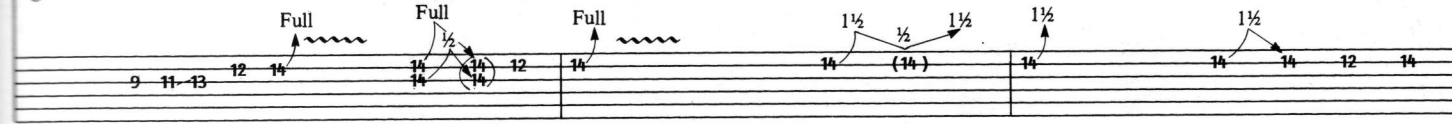
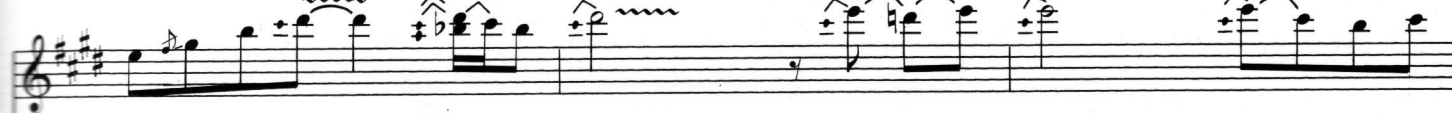
no-bod-y of it is worth... Hey, Hey! Guitar solo



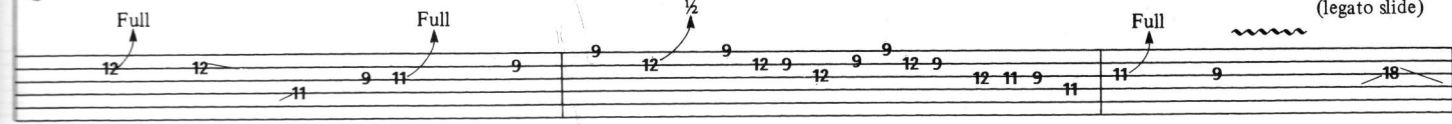
Full Full Full



Rhythm Gtr. con't. simile



Full Full Full 1 1/2 1/2 1 1/2 1 1/2 1 1/2



Full Full Full (legato slide)

Verse

C#m B A B A

No rea - son to get ex - cit - ed (uh) (heh)

Rhythm pattern

the thief he kind - ly spoke. — There are ma - ny here a - mong us

Rhythm can't, simile

who feel that life — is but a joke. — But uh but you and I we've been — through that (but ah)

(reverse guitar)

and this is not our fate. — So let us not talk false - ly now

C#m B A B (indefinite pitch) A C#m B A B

the ho - ur's get - tin' late. Ah, hey!

Guitar solo

Full

5 7 5 4

4 6 4 4 6 9 9 9 9 9 11 11 11 13 11

12 9 9 9 9 9 9 9

Rhythm pattern

Rhythm con't. simile

Full

Full Full

Full

Full

Full

12 9 (12) 9 11 9 11 11 11 11 11 9 9 14 12 14 14

14 (14) 12 14 14 14 12 14 12 14 1 1/2 Full Full Full Full 14 14 14 14 14 12 13 1

Played with slide on 12 string (normal tuning.)

C#m B A B A Rhythm con't. simile

w/ echo plex

15 15 15 2/2 2/2 4 11 11 14 9 11 9

Rhythm pattern

Hey!
*End slide guitar

14 11 14 9 11 11 13 11 9 11

C#m B A B A C#m B A B A

sva Rhythm con't. simile

Full Full Full Full Full slowly

12 12 14 14 16 16 19 19 11 9 12 12 9 11 9 12 9 11 11 9 9 11 11 11 12 12

9 9 11 11 13 13 16 16 11 9 12 12 9 11 9 12 9 11 11 9 9 11 11 11 11 12

Rhythm pattern

Full 1/2 1/4 1/4 Full Full Full Full

9 12 9 11 9 9 12 9 11 9 9 12 9 11 9 12 9 11 11 9 11 12 9 12 9 14 11 11 11

11 9 9 9 9 9 7 7 7 7 5 5 9 9 9 9 10 10 10 10 13 0

4 8 7 7 7 7 6 5 9 9 9 9 11 11 11 11 14

Rhythm pattern

*Only lower octave string is picked

Rhythm con't. simile

Verse

Rhythm con't simile

Aadd9

dis - tance__ uh a wild cat did__ growl._____

B C#m B

Two rid - ers were ap - proach - in' and the wind be - gan to howl.

Rhythm pattern

A C#m B A B C#m

Hey! Ah

Full unison bend throughout Full

not audible

A/C#

B/D#

C#m

G#

A

G#

C#m

A

G#

C#m

B6

A

fade out