

DEATHRIDER

Words and Music by Dan Lilker, Scott Rosenfeld,
Neil Turbin, Dan Spitz and Charlie Benante

Fast Rock ♩ = 320

A5:
 D5:
 Bb5:
 C5:
 G5:
 B5:
 B5(type 2):
 C#5:
 D#5:

Intro

A5

f P.M.-----1

H P P P P

Riff A

(end Riff A)

H P P P P

w/Riff A (2 times)

w/Riff A

N.C.(A5)

Play 4 times

Oh! _____

1st, 2nd, 3rd Verses

N.C.(A5)

Eb5 D5

1. Rid - ing - hard, high in the sad - dle a

2,3. See additional lyrics

Rhy. Fig. 1

P.M.-----1

N.C.(A5) Eb5 Gb5

winged steed of un - wear - ing flight.

(end Rhy. Fig.)

P.M.-----

w/Rhy. Fig. 1 N.C.(A5) Eb5 D5 N.C.(A5)

Sweep - ing through air just - like fi - re. — Swift of the

Chorus Eb5 Gb5 D5 Bb5 C5

foot, great of might. Hear the screams,

D5 Bb5 C5 G5 D5

(Ow!) feel the bite. We ride

Bb5 C5 3rd time to Coda II D5 Bb5 C5

with death to - night.

2nd time to Coda I w/Riff A (4 times) N.C.(A5) 1.2.3. 4. D.S. al Coda

Fill 1

trem. bar

15 14

Interlude
B5
Rhy. Fig. 2

Coda 1
P.M.

Here it comes,

(end Rhy. Fig. 2)
B5(type 2)

B5
P.M.

you bet-ter hide.

w/Rhy. Fig. 2 (1st 5 bars only)

Shoot the guns,

B5

you're gon-na die.

Guitar solo

Ⓟ open
A

Ⓟ open
A

(end Rhy. Fig. 3)

sl.

w/Rhy. Fig. 3 (3 times)

(5)open A 1/4 1/4 1/4 1/4 C5 D5 (5)open A Full C5 G5 (5)open A 8va- Full loco sl.

grad. bend Full trem. bar slack Full

C5 D5 C5 Bb5 (5)open A C5 D5

Full P 2 1/2 P trem. bar 2 1/2 P

(5)open A C5 G5 (5)open A C5 D5

H P 3 P H P P

C5 Bb5 (5)open A C5 D5 (5)open A Full

Full

C5 G5 (5)open A C5 D5 C5 Bb5

3

A5

Full

grad. bend

Full

w/Riff A (4 times)
N.C.(A5)

1.2.3. | 4. D.S. at Coda II

Coda II

D5 Bb5 C5

8va

night.

w/Rhy. Fig. 3 (2 times)

5 open A C5 D5 5 open A C5 G5 5 open A

8va

8va Full

Full

loco

A.H. (8va) Full

Full

sl.

Full

Full

22 (22) 12 12 12 12 (12) (2) 16 15 16 15 17

(6)

5 open A

A.H. (8va)

C5 D5

Full

Full

A.H. Full

12 (12) 15

(17) (17) 15 15 16 17 16 14 17 16 17 11 17 14 17 14 (14)

sl.

⑤ open A Full C5 G5 ⑤ open A C5 D5 C5

Bb5 sl. w/Riff A & Fill 2 N.C.(A5) Play 3 times N.C.(A5)

Fill 2 (end of Guitar solo)

Additional Lyrics

2. Conquering all, spreading terror.
Hoofs gallop in thunderous pound.
Devouring the souls of the wretched.
Trampling them down to the ground. *(To Chorus)*
3. Gripping the reins of destruction.
Made of steel on his hands.
Holder of forces immortal.
Slaughtering all in his path. *(To Chorus)*

METAL THRASHING MAD

Words and Music by Dan Lilker,
Scott Rosenfeld, Neil Turbin,
Dan Spitz and Charlie Benante

Fast Rock ♩ = 184

[1.2.3.]

[4.]

Intro

D5 D5

f P.M.-----|-----|

A5

Oh,

Rhy. Fig. 1

P.M.-----| P.M.----| P.M.----| P.M.-----| P.M.----| P.M.----|

yeah!

(end Rhy. Fig. 1)

P.M.-----| P.M.----| P.M.----| P.M.-----| P.M.----| P.M.----|

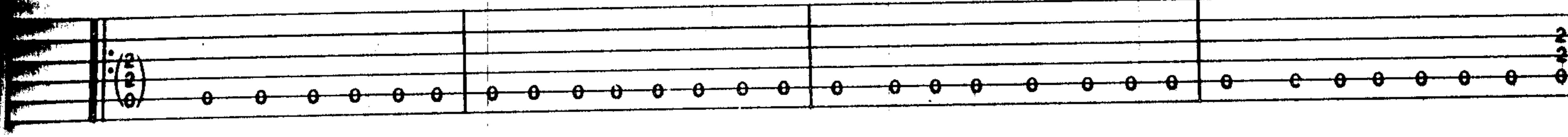
1st, 2nd, 3rd Verses



1. Rac-ing down the road in a street ma - chine of steel.
2.3. See additional lyrics



P.M.



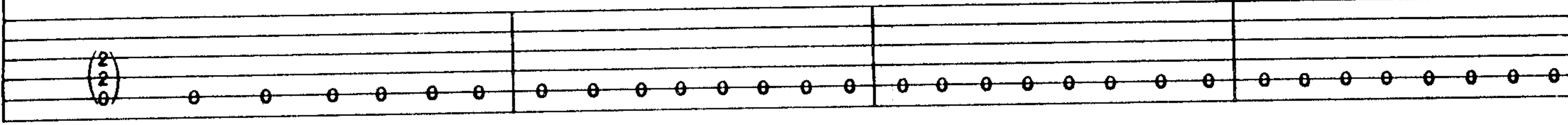
P.M.



Gears are jammed in full, I'm the mad - man at the wheel.



P.M.



P.M.

Chorus

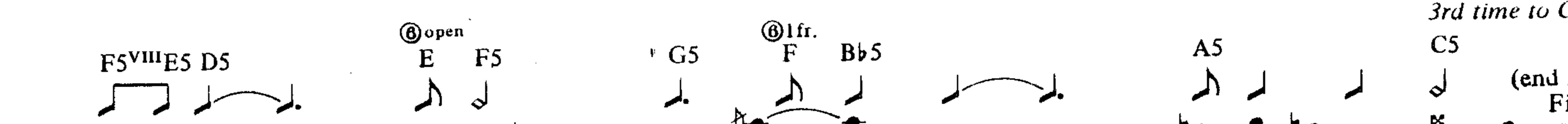
Rhy. Fig. 2

F5 G5 [ⓐ]1fr. F Bb5 A5 [ⓑ]open A C5 [ⓒ]3fr. C

P.M. P.M.

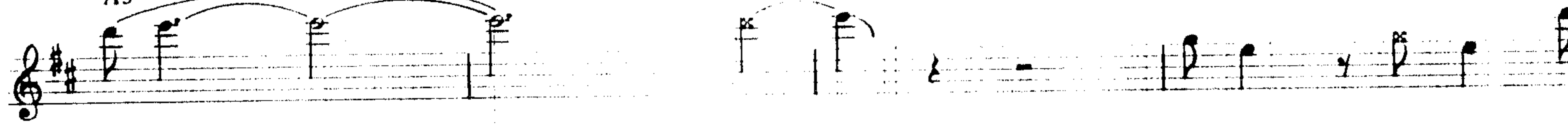


Got my foot pinned to the floor, you can feel the en - gine roar.

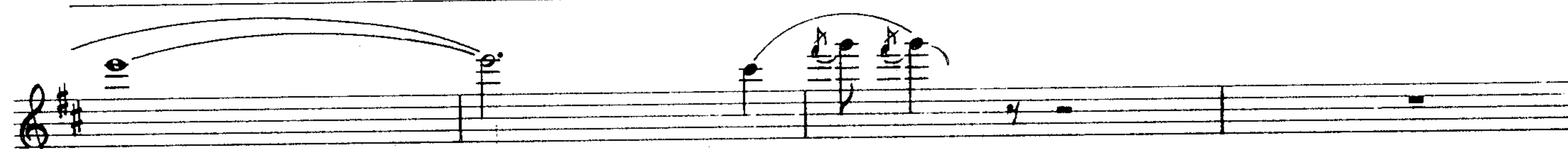


I got thun - der in my hands, I'm met - al thrash - ing

1. w/Rhy. Fig. 1 A5



mad, yeah, met - al thrash - ing ma



yeah.

E5 F5^{VIII} E5 F5^{VIII} C5

w/Rhy. Fig. 4 (1st 3 bars only)

8va-----

w/Rhy. Fig. 3 (2 times)

G5^x

F5^{VIII}

A5

8va-----

A5

8va-----

8va-----

D.S. al

Coda Chorus w/Rhy. Fig. 2

D5 F5 G5 F Bb5 A5 A C5 C

mad. Got my foot pinned to the floor, you can feel the engine roar.

F5 E5 D5 E F5 G5 F Bb5 A5 C5

I got thunder in my hands, I'm metal thrashing

D5 F5 C5 D5 F5 C5 D5 F5 C5

Freely D5

8va

mad, yeah!

8va Full loco trem

Full f

15 10 (12)

8va

sl.

slack

trem. bar

slack

sl.

sl.

(10) 12 (14) 14 (16) (14) 16 (17) 17 (19) 17





Additional Lyrics

2. Driving like a maniac,
Can't go any faster.
Burning up the road,
Headed for disaster. (To Chorus)
3. Repeat 1st Verse (To Chorus)

I'M EIGHTEEN

Words and Music by Michael Bruce,
Alice Cooper, Dennis Dunaway,
Neal Smith and Glen Buxton

Medium Rock ♩ = 112

A5  B5  C5  3fr. D5  5fr.

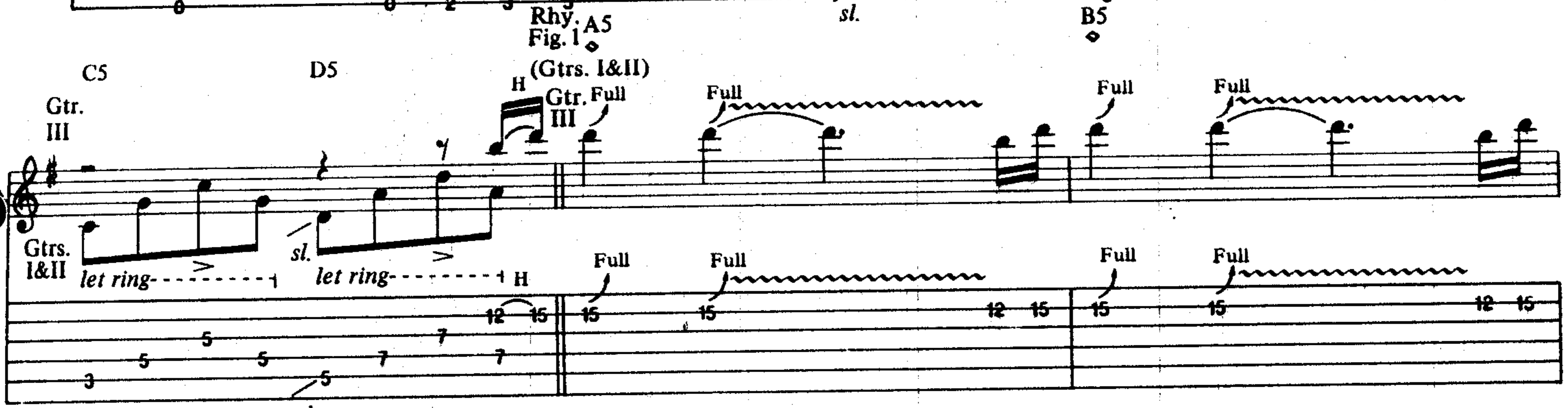
Intro Em Gtrs. I&II Riff A Gtr. I C5 Gtrs. I&II D5 (end Riff A) Em Gtr. I

f *let ring* *sl. let ring*



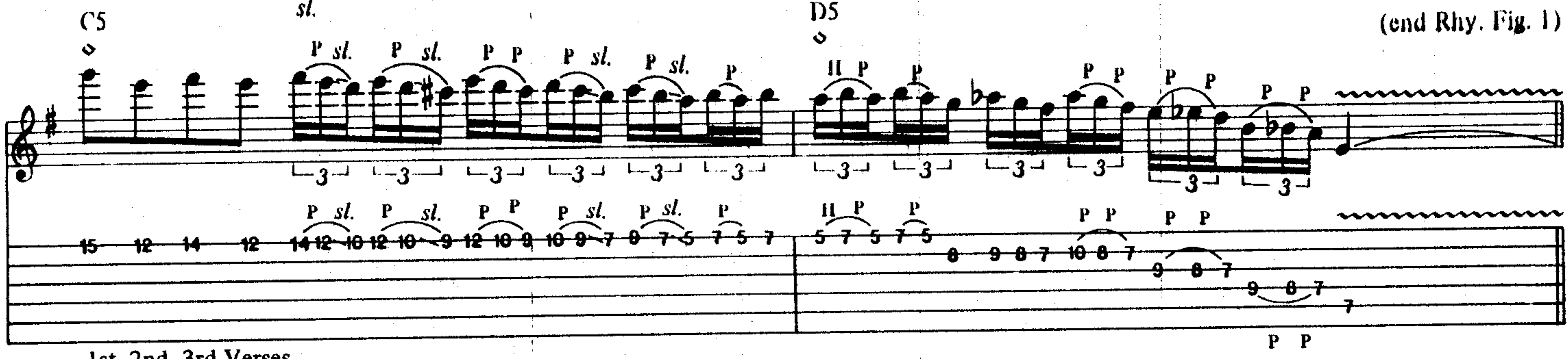
C5 D5 Rhy. A5 Fig. 1 (Gtrs. I&II) Gtr. Full III Full Full Full Full

let ring *sl. let ring* *H* *Full* *Full* *Full* *Full*



C5 *sl.* D5 (end Rhy. Fig. 1)

P sl. *P sl.* *P P* *P sl.* *P sl.* *P* *H P* *P* *P P* *P P* *P P*



1st, 2nd, 3rd Verses
w/Fill 2 (2nd time only)
w/Fill 3 (3rd time only)
N.C.(E5)

C5 D5 N.C.(E5)

1. Lines form on my face and hands. Lines form from the
2.3. See additional lyrics (Gtr. III out)
Gtrs. I & II Rhy. Fig. 2

sl. *let ring* *sl. let ring*



*1st time only.

Fill 2

sl. steady gliss. *P*

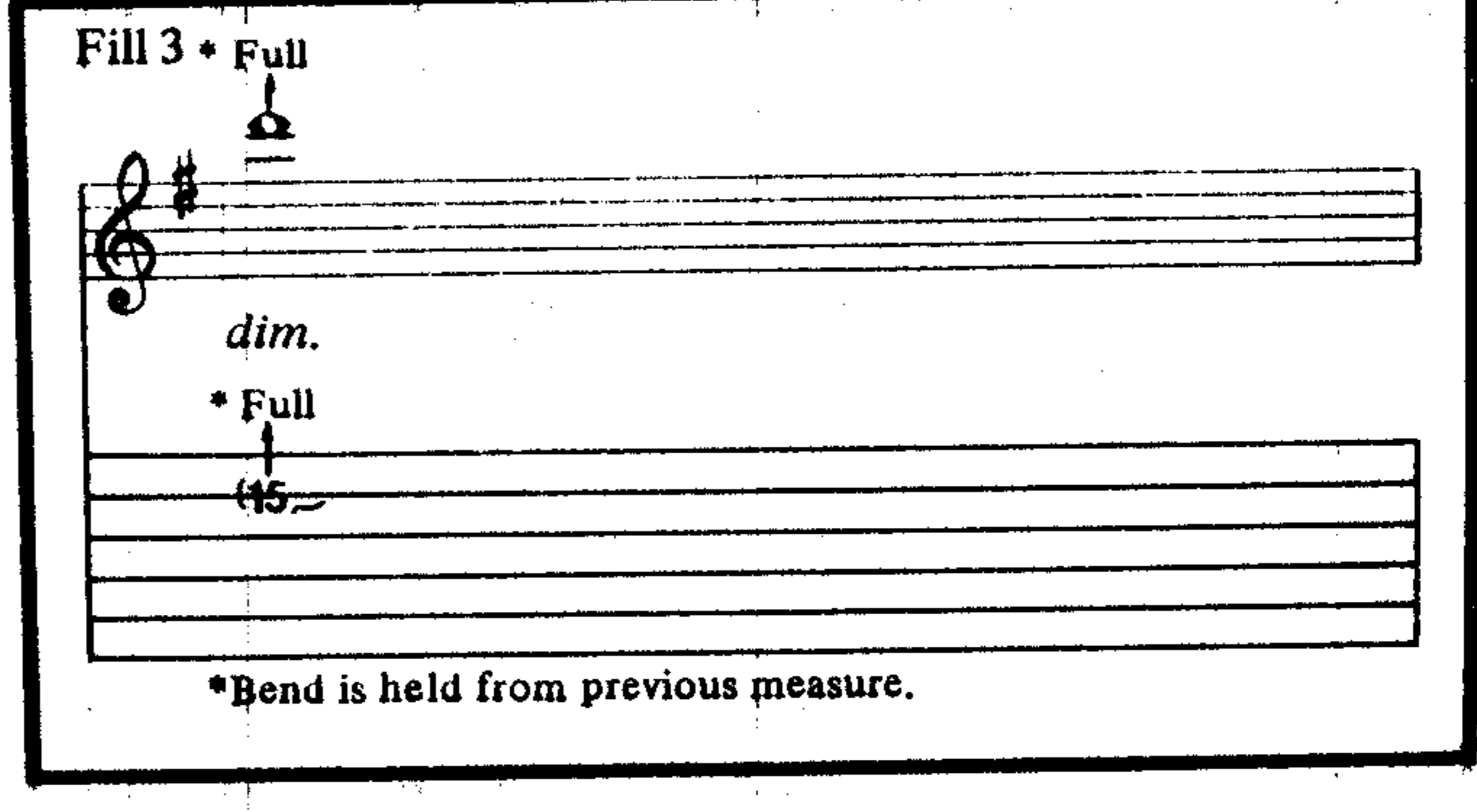
sl. *P*



Fill 3 + Full

dim. ** Full*

**Bend is held from previous measure.*



C5 D5 C5 w/Fill 1 D5

ups and downs. I'm in the mid - dle with - out an - y plans. —

(end Rhy. Fig. 2)

let ring----- sl. let ring----- P.M.-- P.M.-- P.M.-- P.M.-- P.M.-- P.M.-- P.M.--

sl.

w/Rhy. Fig. 2 3rd time to Coda II N.C.(E5) C5 D5 Em C5 D5

1st Chorus w/Riff A (3 times)

I'm a boy and I'm a man. I'm eight - een and I don't know what I want. —

Em C5 D5 Em C5 D5

Eight - een. I just don't know what I want. — Eight - een. I got to get a - way.

w/Rhy. Fig. 1 A5 B5 C5 D5

I got to get out — of this place. — I'll go — run-nin' in out - er space_woh, yeah!

w/Rhy. Fig. 2 (2 times) N.C.(E5) H C5 H P D5 Full

H P Full

H

Fill 1

7 9 8 7 9 7 (7)

Em C5 Full Full D5 Full Full sl.

Em Full Full C5 D5

Em C5 8va D5 P P P P P

Em 8va C5 D5 loco sl. Fade out

Additional Lyrics

2. I've got a baby's brain and an old man's heart.
 Took eighteen years to get this far.
 Don't always know what I'm talking about.
 Feels like I'm living in the middle of doubt.
 'Cause I'm (To 2nd Chorus)

3. Lines form on my face and my hands.
 Lines form from the left and right.
 I'm in the middle, the middle of life.
 I'm a boy and I'm a man.
 I'm eighteen and I like it, etc.

PANIC

Words and Music by Dan Lilker,
Scott Rosenfeld and Neil Turbin

E5 C5 G5 B5 A5 C5/A B5/A D5/A D5 E5VII F5 F#5 Eb5

Fast Rock ♩ = 220

Intro (Drums) 4

E5 Rhy. Fig. 1 *Play 3 times*

P.M. *f*

*Play 1st time only; rest 2nd and 3rd times.

C5 G5 C5 G5 C5 G5 w/Rhy. Fig. 1 (2 times)

(end Rhy. Fig. 1) E5

C5 G5 C5 G5 C5 G5

E5

C5 G5 C5 G5 C5 G5

⑥ open
 (str.) E
 Fig. 2
 P.M. *sim.* % % %
 (end Rhy. Fig. 2)
 C5 G5 C5 G5 C5 G5

1st, 2nd Verses
 w/Rhy. Fig. 2

⑥ open
 E
 1. Move it to the front, reach - ing for the light, los - in' all con - trol,
 2. See additional lyrics
 C5 G5 C5 G5 C5 G5
 w/Rhy. Fig. 1 (1st 6 bars only)
 ⑥ open
 E
 us - ing all your might. Wheels are gon - na spin,
 C5 G5 C5 C5 B5
 ass - es gon - na shake, we are gon - na kick, walls are gon - na break.

Chorus
 A5

C5/A B5/A D5/A C5/A B5/A A5
 The road is hard, the fight is tough. Gon - na
 C5/A B5/A D5/A C5/A B5/A D5/A
 play it fast, she likes it rough. With my strength,
 C5/A B5/A A5 C5/A B5/A D5/A
 with all my soul mak - in' love, I'm
 A5 Rhy. Fig. 3 B5 C5 B5 D5 ⑥5fr. D
 P.M. P.M.

los - ing con - trol!

(end Rhy. Fig. 3)

E5^{vii} D5 C5 w/Rhy. Fig. 3 (3 times) B5 D5 ⑥5fr. D
 B5 C5 B5^{vii} D5 C5 B5
 ⑥5fr. ⑥5fr.
 C5 B5 D5 D C5 B5 D5 D E5^{vii} D5 C5

Musical staff with notes and chord markings: 115, open, 1:5, F#5, open E.

Guitar solo I

Musical staff with notes and chord markings: G5, Eb. Includes a guitar tablature below the staff.

12	(12)	10	7	10	7	5	7	8
10	10	8	5	8	5	3	5	6

Musical staff with notes and chord markings: C5. Includes a guitar tablature below the staff.

(8)	7	5	7	5	8	(8)	5	7	5
6	5	3	5	3	6	6	3	5	3

Musical staff with notes, slurs, and chord markings: D5. Includes a guitar tablature below the staff.

8	7	8	7-8-7	10	8	7	(7)
5	3	6	6-8-5	8	6	6	6

Musical staff with notes, slurs, and chord markings: G5. Includes a guitar tablature below the staff.

7	13	(13)	(13)	10	12	12	10
5							

Musical staff with notes, slurs, and chord markings: Eb5. Includes a guitar tablature below the staff.

12	10	11	12	(12)	10	12	10	13	13	10	15	10

N.C.(Gm)

TPH TPH TPH TPH TPH TPH TPH TPH TPH TPH TPH TPH TPH TPH TPH TPH

10 6 8 10 6 8 10 6 8 10 6 8 10 6 8 10 6 8 10 6 8 10 6 8 10 6 8 10 6 8 10 6 8 10 6 8 10 6 8

TPP TPP TPP TPP TPP TPP TPP TPP TPP TPP TPP TPP TPP TPP TPP TPP

11 10 8 11 10 8 11 10 8 11 10 8 11 10 8 11 10 8 11 10 8 11 10 8 11 10 8 11 10 8 11 10 8 11 10 8

(Eb5)

TPH TPH TPH TPH TPH TPH TPH TPH TPH TPH TPH TPH TPH TPH TPH TPH

11 8 10 11 8 10 11 8 10 11 8 10 11 8 10 11 8 10 11 8 10 11 8 10 11 8 10 11 8 10 11 8 10 11 8 10

TPP TPP TPP TPP TPP TPP TPP TPP TPP TPP TPP TPP TPP TPP TPP TPP

12 10 8 12 10 8 12 10 8 12 10 8 12 10 8 12 10 8 12 10 8 12 10 8 12 10 8 12 10 8 12 10 8 12 10 8 12 10 8

(C5)

TPH TPH TPH TPH TPH TPH TPH TPH TPH TPH TPH TPH TPH TPH TPH TPH

12 8 10 12 8 10 12 8 10 12 8 10 12 8 10 12 8 10 12 8 10 12 8 10 12 8 10 12 8 10 12 8 10 12 8 10

TPP TPP TPP TPP TPP TPP TPP TPP TPP TPP TPP TPP TPP TPP TPP TPP

13 12 10 13 12 10 13 12 10 13 12 10 13 12 10 13 12 10 13 12 10 13 12 10 13 12 10 13 12 10 13 12 10

3rd Verse
w/Rhy. Fig. 2 (4 times)

⑥ open E

3. Move it to_ the front,_ reach - ing for the light,_ los - ing all con - trol,_

C G5 C5 G5 ⑥ open E

_ us - ing all_ your might. _ Wheels are gon - na spin,_

C5 G5 C5

● ass - es gon - na shake,_ we are gon - na kick, walls are gon - na break._

G5 C5 G5 ⑥ open E

_ Backs are turned,_

C5 G5 C5

rock and roll,_ to the wall,_ I'm los - ing_ my

G5 C5 G5 ⑥ open E

● mind.

C5 G5 C5

G5 C5 G5 C5 G5 C5 G5 E5

Yeah!

Hey, hey!

Additional Lyrics

2. Guts begin to churn, minds are in a haze,
Hell is gonna burn, axes in a blaze.
Go in for the kill, always on the run,
Fighting for your life, the battle's never won. (To Chorus)

SOLDIERS OF METAL

Words and Music by Dan Lipe
Scott Rosenfeld and Neil Turbin

Fast Rock ♩ = 184

F5 VIII 8fr. E5 VII 7fr. C5 3fr. A5 11fr. D5 5fr. C5 3fr. F5 11fr.
 G5 3fr. B5 11fr. F#5 11fr. G5x 10fr. Eb5 6fr. A5 XII 12fr. E5 11fr.

Intro (Two gtrs.)

F5 VIII E5 VII C5 A5 D5

Rhy. Fig. 1 P.M. P.M.

*Play only lowest note of chord when P.M. is indicated (throughout).

C5 D5 F5 G5 A5 C5

P.M. P.M. P.M. P.M.

Play 4 times (end Rhy. Fig. 1)

Rhy. Fig. 2 E5 VII D5 E5 VII G5 A5 B5 D5

P.M. P.M. P.M. P.M. P.M. P.M.

1st Verse

Rhy. Fig. 3 F#5 G F#5 F#5

P.M. P.M. P.M. P.M.

We are fight - ing

(end Rhy. Fig. 3)

C5 w/Rhy. Fig. 3 F#5 G F#5 F#5 C5

P.M. P.M. P.M. P.M.

for your lives.

Rhy. Fig. 4 A5 G5 A5 C5

P.M. P.M. P.M. P.M.

Oo, we are the sol - diers

w/Rhy. Fig. 4 A5 G5 A5 C5

P.M. P.M. P.M. P.M.

in the line of fire.

Rhy. Fig. 5 D5 C5 D5 F5 VIII

P.M. P.M. P.M. P.M.

Down in the trench - es, we wait for the night,

w/Rhy. Fig. 5
D5 C5 D5 F5^{VIII}

the time is ap - proach - ing, we're read - y to strike!

w/Rhy. Fig. 4 (1st 3 bars only)
A5 G5 A5 C5 D5

P.M.

w/Rhy. Fig. 3 (4 times)
F#5 G F# F#5 C5

We'll stop at noth - ing, there's no hold - ing back,

born to raise hell, we will at - tack.

F#5 G F# F#5 C5 F#5

G F# F#5 C5 F#5 F#5 C5

F#5 B5 C5 B5

Guitar solo

Rhy. Fig. 6

Full P.M. P.M. P.M. P.M.

H H H H

T A B

10 9 7 9 11 7 9 11 11 9 9 7 9 11 7 9 10 10

(end Rhy. Fig. 6)

D5 B5 C5 B5

w/Rhy. Fig. 6 (1st 3 bars only)

Full P.M. P.M. P.M. P.M.

8va loco

P H P H

10 17 16 14 16 14 16 14 14 14 17 16 17 17 16 17 17 16 17 16 14 16 14 14 (14) 16 16 16 14 14 (16) 14 16 14 16 14 13

F5^{VIII} D5 F5^{VIII} D5

Full

1/4

sl.

grad. bend

Full

1/4

sl.

P P P.M. P P P P

16 14 13 10 10 13 (13) 10 13 10 13 10 10 12 (12) 12 10 12 12 10 12

G5^x D5 F5^{viii}

Full Full

12 10 12 10 13 10 12 10 12 13 12 12 15 13 15 12 14 12 15 (15)

D5 G5^x D5

8va

H H P H H H P H

17 19 17 19 17 17 20 17 20 17 20 17 20 19 17 19 (19)

Rhy. Fig. 7 (end Rhy. Fig. 7)

A5 Eb5 D5 A5 G5^x A5^{xii}

P.M. P.M. P.M. P.M.

w/Rhy. Fig. 7

A5 Eb5 D5 A5 G5^x A5^{xii}

8va

Woh! Yeah!

2nd Verse w/Rhy. Fig. 7 (2 times)

A5 Eb5 D5 A5 G5^x A5^{xii} A5

Pound - ing - a - way, tear - ing - through flesh, sol - diers - of met - al,

Eb5 D5 A5 G5^x A5^{xii} F#5 w/Rhy. Fig. 3 (2 times) ©3fr. 2fr. G F#

fight to - the death. Blast - ing - the can - nops, - shak - ing - the

F#5 C5 F#5 ©3fr. 2fr. G F#

ground, - hack - ing - and kill - ing, - we're not fool - ing - a -

w/Rhy. Fig. 1 (2 times)

F#5 C5 D5 C5 D5

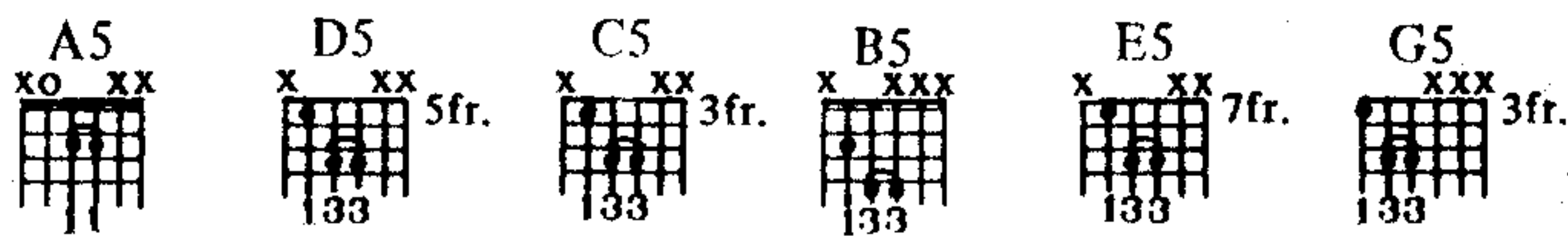
round. Warr - iors - in bat - tle, all dressed - in black,

F5 G5 A5 C5 D5 C5 D5

a slash and - a thrust, a stab in - the back.

HOWLING FURIES

Words and Music by Dan Lilker
and Scott Rosenfeld



Fast Rock ♩ = 176

Intro N.C.

Rhy. Fig. 1

E5 D5 N.C. G5 F#5

f *P.M. P.M. P.M.

*Run L.H. across length of ⑥ stg. creating random harmonics.

(end Rhy. Fig. 1) w/Rhy. Fig. 1 (3 times)

N.C. E5 D5 C5 G5 A5 E5

1.2. 3.

C5 A5

P.M. - - - 4

w/Rhy. Fig. 1

N.C. E5 D5 N.C. G5 F#5 N.C. E5 D5 C5 G5 A5

1st, 2nd, 3rd Verses w/Rhy. Fig. 1 (4 times)

N.C. E5 D5

1. A - ban - don all hope for those

2.3. See additional lyrics

N.C. G5 F#5 N.C. E5 D5 C5 G5 A5 N.C. E5 D5

who en - ter. - Cause there ain't too much of that

N.C. G5 F#5 N.C. E5 D5 C5 G5 A5 N.C. E5 D5 N.C. G5 F#5

down here. - A cloud - ed mist in a dark - ened tun - nel

N.C. E5 D5 C5 G5 A5 N.C. E5 D5 N.C. G5 F#5

and twist - ed screams are grow - ing near. -

2nd time to Coda I; 3rd time to Coda II

Guitar solo

A5

D5

Gtrs. I & II

A.H. (15ma)

N.C. E5 D5 C5 G5 A5

A.H. (15ma)

1 1/2

Full

1 1/2

A.H.

A.H.

1 1/2

Full

1 1/2

A.H.

3fr.

C5 G A5

A.H. pitches: E E E *Play 1st time only.

D5

A.H. pitch: D

A.H. (15ma)

Full

Full

Full

Full

Full A.H. (15ma)

A.H. (15ma)

sl.

Full

A.H.

Full

Full

P

Full

Full

Full A.H.

A.H.

sl.

A.H. pitches: B B B

3fr.

A5 G A5

Rhy. Fig. 2

B5

sl.

Full

Full

Full

A.H. (15ma)

Full

loco

Full

Full

Full

(grad. bend.)

Full

19

17

17

20

20

17

20

17

19

17

17

17

17

17

17

17

17

17

17

17

A.H. pitch: G

D5 A B5

(end Rhy. Fig.)

E5

P

P

H

H

sl.

14

16

14

16

14

16

14

16

14

16

14

16

14

16

14

16

14

16

14

16

14

16

14

16

14

16

14

16

14

16

w/Rhy. Fig. 2

B5

A.H. (8va)

E5

A.H.

D5 A

A.H. (8va)

sl.

A.H.

Full

Full

Full

A.H.

P.M.

P.M.

A.H.

sl.

9

9

9

9

9

9

9

9

9

9

9

9

9

9

9

9

9

9

9

9

9

A.H. pitch: D#

sl.

A.H. pitch: B

sl.

Rhy. Fig. 3
G5
Riff A (Both gtrs.)
two gtrs.)

(8) open
B5 A B5

(end Rhy. Fig. 3)
(end Riff A)

both gtrs. vib.

7 8 7 9 9 10 10 9 10 10 12 10 10 12 10 10 9 7 10 7 8 10 7 9

w/Riff A (1 1/2 times)
w/Rhy. Fig. 3 (2 times)
G5

Full A5 1/2 B5 A B

*Numbers to the right of slashes indicate lower gtr.

G5 Full A5 1/2 B5 A B5

w/Fill 1 (5) open

15 15 17 17 17 17 19 19 19 19 19 17 14 15 14 16 14

w/Rhy. Fig. 1 (1 1/2 times)

1. N.C. E5 D5 N.C. G5 F#5 N.C. E5 D5 C5 G5 A5

2. w/Rhy. Fill 1 N.C. E5 D5 C5 G5 A5

D.S. al Coda I

Fill 1
(Two gtrs.)

both gtrs. vib.

10 12 (10) (12)

Rhy. Fill 1

N.C. E5 D5 C5 G5 A5

P.M.-----4

9 9 7 7 5 7 5 5 2 7 5 5 2 5 3 5 0 3 2

Coda I

1.2.3. 4.

D5 C5 B5 N.C. A5 G5 A5 A5

both notes vib.

w/Rhy. Fig. 1

1. 2. D.S. al Coda II

N.C. E5 D5 N.C. G5 F#5 N.C. E5 D5 C5 G5 A5 C5 G5 A5

3. You

Coda II

w/Rhy. Fig. 1

N.C. E5 D5 N.C. G5 F#5 N.C. E5 D5 C5 G5 A5

Yeah!

w/Rhy. Fig. 1 (till end)

Repeat and fade

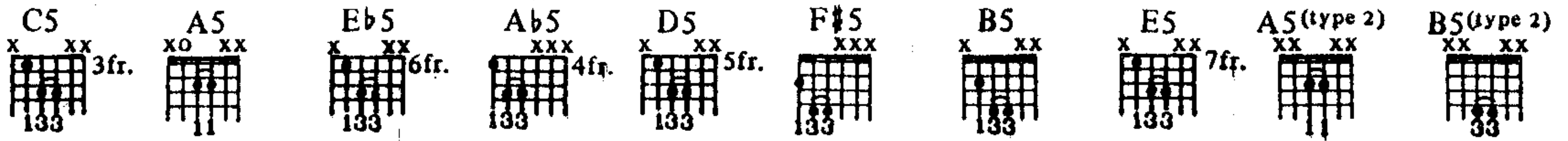
N.C. E5 D5 N.C. G5 F#5 N.C. E5 D5 C5 G5 A5

Additional Lyrics

2. Now you're down here, you're all gonna stay,
'Cause the howling furies wanna come out and play.
You're headed for doom, you'd better prepare,
'Cause in this part of the woods almost anything's fair, yeah.
3. You lied and cheated in your miserable life.
You met your end with a butcher knife.
We laughed when you died, you sit in your grave,
Just waiting to turn into Satan's slave.

SUBJUGATOR

Words and Music by Dan Lilker,
Scott Rosenfeld, Neil Turbin,
Dan Spitz and Charlie Benante



Fast Rock ♩ = 168

Intro (Drums)

② 2fr. F#

P.M. *sim.* % %

f

2 4 5 2 5 4 5 4 2 4 2 0

⑤ 5fr. A

P.M. *sim.* % %

2 4 5 2 5 2 4 2 4 5 4 2 5 7 4 5 4 7 4 7 5 7 5 4

⑥ 4fr. C#

P.M. *sim.* % P.M. *semi-harm.*

5 7 4 5 4 7 4 7 5 7 5 4 5 7 4 5 4 5 7 5 7 7 5 4 5 7 4 5 7 4 5 7

⑦ 7fr. E

P.M.

4 7 4 5 4 5 7 5 7 4 7 4 6 7 9 6 7 9 6 7 9 6 7 9

Eb5 D5 F#5

8va-----

C C5 Ab5 Full P Full

Double time

(♩ = ♩) F#5

pick slide

Guitar solo III

Rhy. Fig. 3

A5 B5 C5

P.M.-----

P P P P P P P P

(end Rhy. Fig. 3)

D5 E5 D5 C5 w/Rhy. Fig. 3 (3 times) A5

8va-----

sl. *sl.* *loco* Full P Full

B5 C5 8va

14 14 12 12 14 14 12 14 (14)

D5 E5 D5 C5 A5 B5 8va

19 17 15 15 15 19 17 15 15 20 (20) (20) 8 (0) (0) 8 0 0 0 (0) 0 0 0

C5 D5 A.H. (8va) E5 D5 C5

5 (7) 7 5 7 5 7 7 5 (5) (5) 7 7 A.H. Full 7 (7)

A5 B5 A.H. (8va) A.H. (8va) A.H. (8va) A.H. (8va) A.H. (8va) A.H. (8va) Full p

A.H. A.H. A.H. A.H. A.H. A.H. A.H. A.H. Full p

7 5 7 7 5 7 5 7 5 7 5 7 5 7 5 7 5 7 5 7 5 7 7 (7) 5

A.H. pitches: E E E E E E E E

C5 D5 E5 D5 C5

7 5 7 7 5 7 5 6 7 5 7 5 0 5 5 8 5 7 5 7 5 7 5

3rd Verse

Rhy. Fig. 4
 ③2fr. F# A5
 P.M.-----

leash - ing the sound, lash - ing out, strik - ing down

③2fr. F# A5
 P.M.-----

all those who stand in the way.

w/Rhy. Fig. 4
 ③2fr. F# A5
 ③2fr. F# A5

Tak - ing their lives, crush - ing them just like flies. The

③2fr. F# A5
 ③2fr. F# A5(type 2) B5(type 2)

cries of the wound - ed in pain.

Chorus
 w/Rhy. Fig. 3 (2 times)
 A5 B5

Fight - ing the fight as we race through the night, with

C5 D5 E5 D5 C5

pow - er like nev - er be - fore.

A5 B5

Ham - mer - ing, bash - ing them, pound - ing and smash - ing them

C5 D5 E5 D5 C5

hard so we won't take a fall. Like a

w/Rhy. Fig. 4 (2 times)
 ③2fr. F# A5
 ③2fr. F# A5

rag - ing in - fer - no we'll tor - ture and burn (you)

②2fr. F# A5 ②2fr. F# A5(type 2)B5(type 2)

up in a sea of flames. — We'll

②2fr. F# A5 ②2fr. F# A5

beat you and whip you of hon - or, we'll strip you.

②2fr. F# A5 ②2fr. F# A5(type 2)B5(type 2)

Down on your knees and beg. —

Half time C5 A5

We're fight - ing it out till the end. —

Harm. 1½ Harm. (8va) sl. slack

trem. bar Harm. 1½ Harm. 7 7 (0) (0) sl. trem. bar slack

Eb5 C5 Ab5 Eb5 D5

We're liv - ing our lives for the sins. —

vib. w/bar 4½ trem. bar slack slack

vib. w/bar 4½ slack slack

Double time
Guitar solo IV
w/Rhy. Fig. 3 (2 times)

G5 N.C. *Play 4 times* Δ^5 8va-
3 3 3 3
15 14 12 14 12 15 15 14 15 14 12

loco B5
5 3
14 12 15 14 15 12 14 12 14 15 14 12 14 12 14 12 14 12 11 14 12 11

C5 D5
3
14 12 11 12 11 14 11 14 12 14 12 14 12 14 12 14 12 14 12 16 14 12

E5 D5 C5 A5 B5
sl.
12 (12) 10 10 12 12 10 10 12 12 10 10 12 12 9 11 9 (9) 12 11 11 11 15 15

Full Full Full Full
8va-
15 15 11 12 14 (14) 17 20 20 (20) 17 21 17 17 20 20 17 20 19 17 19 17

w/Rhy. Fig. 4 (2 times) $\textcircled{2}$ fr. F# loco $\textcircled{2}$ fr. F# Full
E5 D5 C5 A5
sl. P H P H H Full
19 (19) 2 4 4 4 4 4 2 6 4 6 7 11 9 11 9 11 (11) 12 9

Full A5 $\text{\textcircled{C}}2\text{fr. F}\sharp$ $1\frac{1}{2}$ Full P H P A5 P $\text{\textcircled{C}}2\text{fr. F}\sharp$ H P 8va Full

8va A5 B5 $\text{\textcircled{C}}2\text{fr. F}\sharp$ A5 $\text{\textcircled{C}}2\text{fr. F}\sharp$

loco A5 $\text{\textcircled{C}}2\text{fr. F}\sharp$ $1\frac{1}{2}$ P A5 $\text{\textcircled{C}}2\text{fr. F}\sharp$

A5 B5 w/Rhy. Fig. 3 (2 times) A5 B5

C5 D5 3

© 2fr. F# 8va ----- A5 © 2fr. F# A5 B5

14 14 14 16 16 16 17 17 16 16 16 17 17 17 17 17 (17) (17)

Half time (♩ = ♩) G5 N.C. 1.2.3. 4. D.S. al Coda

5 5 5 4 0 4 5 0 5 3 (4) 4 5 0 5 3 (4)

Coda w/Rhy. Fig. 3 A5 B5

Fight - ing the fight as we race through the night, with
pow - er like nev - er be - fore.

C5 D5 E5 D5 C5

w/Rhy. Fig. 3 (1st 7 bars only) A5 B5

Ham - mer - ing, bash - ing them, pound - ing and smash - ing them
hard so we won't take a fall.

C5 D5 E5 D5 C5

Freely A5

DEATH FROM ABOVE

Words and Music by Scott Rosenfeld,
Neil Turbin and Dan Spitz

Moderate Rock ♩ = 160

Rhy. Fig. 1

Intro

D5 (end Rhy. Fig. 1) w/Rhy. Fig. 1 (3 times)

B5 Rhy. Fig. 5 C5 B5 C5 B5 N.C. (end Rhy. Fig. 5)

P.M.----- sl. P.M.----- sim. P P P P

w/Rhy. Fig. 1
 (open) E B5 (open) E B5 B5 [1.2.3. D5] [4. D5] D.S. al Coda I

Coda I B5 A5 C5

Guitar solo II w/Rhy. Fig. 5 (4 times) B5 C5 B5

Death from a - bove!

Full Full Full Full Full Full Full Full

Full Full Full Full Full Full Full Full

C5 B5 N.C. C5 B5

Full Full Full Full Full Full Full Full

Full Full Full Full Full Full Full Full

C5 B5 C5 B5 N.C.

Full Full Full Full Full Full Full Full

Full Full Full Full Full Full Full Full

sl. sl.

C5 B5
8va-----

Ah.

C5 B5

C5 B5
8va-----

N.C.

P.M. -----1

C5 B5
8va-----

Ah.

C5 B5

C5 B5

N.C.
8va-----

D.S. al Coda II loco

Jet

slack

trem. bar

slack

Coda II B5

G5

F#5

(d..d)

Free time
ES(type 2)

Death from a - bove.

Full

Full

Two staves of musical notation. The top staff contains a long, sweeping melodic line with a diamond-shaped ornament. The bottom staff contains a similar melodic line with a diamond-shaped ornament.

Two staves of musical notation. The top staff features notes with dynamic markings: "Full", "Full", "Full", "P", "P", "P", "P", "P", "P". The bottom staff shows fret numbers: 15, 12, 15, 15, 15, 14, 15, 12, 14, 12, 14, 12, 14, 12, 14, 12, 14, 12, 14, 12, 14, 12, 14, 12, 14, 12, 14, 12.

Two staves of musical notation. The top staff contains a long, sweeping melodic line with a diamond-shaped ornament. The bottom staff contains a similar melodic line with a diamond-shaped ornament.

Two staves of musical notation. The top staff includes notes with dynamic markings: "sl.", "H", "H", "Full", "Full". The bottom staff includes fret numbers: 15, 12, 12, 12, 14, 12, 14, 12, 14, 12, 14, 12, 14, 12, 15, 12, 15, 12, 15, 12, 15, 12, 15, 12, 15.

Two staves of musical notation. The top staff contains a long, sweeping melodic line with a diamond-shaped ornament. The bottom staff contains a similar melodic line with a diamond-shaped ornament.

Two staves of musical notation. The top staff includes notes with dynamic markings: "Full", "loco", "slack", "Full", "dim. trem. bar", "slack". The bottom staff includes fret numbers: 15, 13, 15, 15, 13, 15, 12, 15, 12, 12, 14, 14, 17, (17), (17), 6.

Double time (♩ = 200)

⑥ 7fr.
E5^{VII} E

E5^{VII}

C5

B5

(Cont. in notation)

(type 2)

E5 (type 2)

A5

1st, 2nd Verses

B5 C5 B5 A5

shat - tered in the night.
paint - ed on the streets.

Sol - Met -

Rhy. Fig. 2

(end Rhy. Fig. 2)

P.M. P.M. P.M.

w/Rhy. Fig. 2 (2 times)

B5 C5 B5 A5

diers al rac - ing to the fight.
cut - ing in - to meat.

Bombs - You

B5 C5 B5 A5

wait - ing to ex - plode.
can see it in my eyes.

Fear - pain - F#5

w/Rhy. Fig. 2 (1st 3 bars only)

B5 C5 B5 A

is cast up - on your soul.
that nev - er will sub - side.

Wo - oh!

②2fr. F# C5(type 2) B5(type 2) F#5 ②2fr. F# D5 C#5 F#5

It's just a-round the cor - ner for those who dare to see.—
 And you can feel the pow - er. On e - vil it will feed.—

②2fr. F# C5(type 2) B5 F#5 ②2fr. F# 1. D5 C#5 A5

With eyes of fire— that burn right through me.— 2. Blood
 The force that sur - rounds me. It brings me to my knees.—

2. D5 C#5 A5^{VII} Chorus E5(type 2) Eb5 A5^{VII}

We bet - ter run for cov - er. There's no time to waste.

F5 E5(type 2) A5^{VII} E5(type 2) Eb5 A5^{VII}

'Cause if you turn your back... now it - 'll blow you a

F5 E5(type 2) A Guitar solo D5 G5 A

way. Yeah! Yeah!

D5 G5

(10) 17 15 17 (17) 17 16 15 20 21 19 20 17 17 20 Full P

2. **Tempo 1 (♩ = 100)**

C5 A5 B5 C5 G5

P.M.----- P.M.-1 P P P.M.-1 sl.

B5 D5 E5 F#5 slack

w/Rhy. Fig. 1 (2 times)

P.M.-1 P P P.M.-1 sl. sl. slack

Bb5 E5 F#5 Bb5

sl. *vib. w/bar* *vib. w/bar*

15 (15) 16 15 (17)

E5 F#5 Bb5 E5 F#5 Bb5

slack *vib. w/bar* slack *vib. w/bar*

16 20 14 (10) (14)

*Vib. w/bar while gradually pulling up.

Double time (♩ = 200)

w/Rhy. Fig. 3

A5 G5 F5 E5 A5 G5 F5 E5 D5

C5 B5 E5 D5 C5 B5 A

ACROSS THE RIVER

Words and Music by Dan Lilker
and Scott Rosenfeld

Fast Rock ♩ = 256

Intro N.C.(E5) *Play 4 times* N.C.(E5) Rhy. Fig. 1

B5 C5 G5 N.C.(E5) B5 C5 *Play 4 times D5 (end Rhy. Fig. 1)*

Guitar solo w/Rhy. Fig. 1 (8 times) N.C. (E5) Harm. * 1/2

*Pull bar up before striking note.

B5 C5 D5 N.C.(E5) B5 C5 G5

N.C.(E5) B5 C5 D5 N.C.(E5)

B5 C5 G5 N.C.(E5) B5 C5 D5

8va-----

Full 3 loco

P sl.

N.C.(E5) B5 C5 G5 N.C.(E5)

Full Full

3 H H 3

B5 C5 D5 Full N.C.(E5) B5 C5 G5 Full

Full Full Full Full

N.C.(E5) B5 C5 D5 N.C.(E5)

slack trem. bar slack

P P

Full Full

3 3 3 3

B5 C5 G5 N.C.(E5) B5 C5 D5

Full Full

1 1/2 1 1/2

3 3 3 3

Tempo I
w/Rhy. Fig. 1 (4 times)
N.C.(E5)

8va----- loco

B5 C5 G5 N.C.(E5)

P 3P P 3 sl. P 3 sl.

P 3 P P 3 sl. P 3 sl.

19 17 15 17 15 14 15 14 12 14
20 19 17 19 17 15 17 15 14 15 7

sl. (B) sl. sl. sl. sl. sl. (C) sl. sl. (D) sl. sl. (E) sl. sl.

vib. w/bar

(6) (7) (8) (10) (12) (13)

P P P sl. P sl.

*Pitches in parentheses are approximate.

B5 C5 D5 N.C.(E5) B5 C5 G5 w/Fill 1 N.C.(E5) B5 C5 D5

8va-----

sl. (D) sl. sl. (E) sl. sl. sl. sl. Full Full

sl. sl. sl. sl. sl. sl. Full

(15) (17) (18) (19) 20 22 (22) (22)

vib. w/bar

N.C.(E5) loco B5 C5 G5 N.C.(E5) B5 C5 D5 N.C.(E5)

1 1 2 2

trem. bar trem. bar vib. w/bar

1 1/2 2 2

0 0 (2) (0) 12 12 (14) (12) (12)

B5 C5 G5 N.C.(E5) B5 C5 D5 E5 (Both gtrs.)

*1 1/2

trem. bar *1 1/2

(12) 15 16 (15) 16

*Pull up on bar.

Segue to HOWLING FURIES

Fill 1

8va-----

3 1/2

trem. bar

17 (17)

3 1/2