

Cruise Control

Bass Line originally played by Francis " Rocco " Prestia
Transcription by Pierre Verger, 1993

As recorded by Tower Of Power, 1993
Composer : G. Adams & N. Milo
From the album " T.O.P. " Epic (Sony Music)

1 $\text{♩} = 118$ (4 x's) 2 3

4 5 (4 x's) 6

7 8 9

10 11 12

13 14 15

16 17 18

19 20 21

22 23 24

25 26 27

28 29 30

31 32 33

Staff 31-33: Bass clef, key signature of two flats. Measures 31-33. Measure 32 contains two 'x' marks above the notes.

34 35 36

Staff 34-36: Bass clef, key signature of two flats. Measures 34-36.

37 38 (3 x's) 39

Staff 37-39: Bass clef, key signature of two flats. Measure 38 is marked with '(3 x's)'. Measures 37 and 39 end with double bar lines and repeat dots.

40 41 42

Staff 40-42: Bass clef, key signature of two flats. Measures 40-42. Measure 42 has a sharp sign above the note.

43 44 45

Staff 43-45: Bass clef, key signature of two flats. Measures 43-45. Measure 45 has an 'x' mark above the note.

46 47 48

Staff 46-48: Bass clef, key signature of two flats. Measures 46-48. Measures 46 and 48 have 'x' marks above the notes.

49 50 51

Staff 49-51: Bass clef, key signature of two flats. Measures 49-51.

52 53 54

Staff 52-54: Bass clef, key signature of two flats. Measures 52-54.

55 56 57

Staff 55-57: Bass clef, key signature of two flats. Measures 55-57. Measure 57 ends with a whole note.

58 59 60

Staff 58-60: Bass clef, key signature of two flats. Measures 58-60. Measures 59 and 60 have 'x' marks above the notes.

61

62

63



64

65

66



67

68

69



70

71

72



73

74

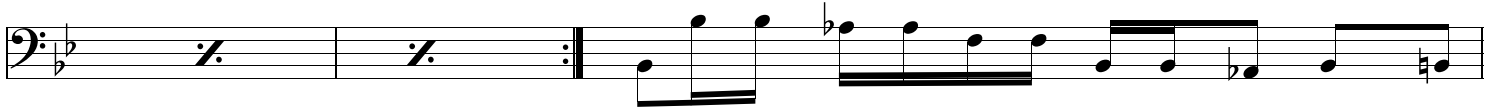
75



76

77

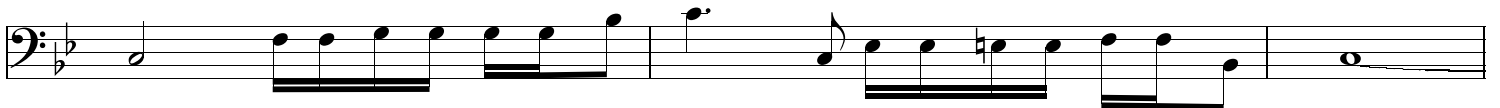
78



79

80

81



82

83

(4 x's)

84



85

86

87



88

89

Etc. Vamp & Fade

