

Down To The Night Club (Bump City)

Bass Line originally played by Francis " Rocco " Prestia
Transcription by Pierre Verger, 1985

As recorded by Tower Of Power, 1972
Composer : Stephen Kupka, Emilio Castillio & David Garibaldi

1 =92

2

Bass Guitar

The first staff of music shows measures 1 and 2. It begins with a bass clef, a key signature of one flat (B-flat), and a 4/4 time signature. Measure 1 contains a quarter note G2, a quarter note A2, a quarter note B-flat2, and a quarter note C3. Measure 2 contains a quarter note D3, a quarter note E3, a quarter note F3, and a quarter note G3. There are rests in the second half of both measures.

3

4

5

Measures 3, 4, and 5. Measure 3: quarter note G2, quarter note A2, quarter note B-flat2, quarter note C3. Measure 4: quarter note D3, quarter note E3, quarter note F3, quarter note G3. Measure 5: quarter note G3, quarter note F3, quarter note E3, quarter note D3. There are rests in the second half of measures 3 and 4.

6

7

8

Measures 6, 7, and 8. Measure 6: quarter note G2, quarter note A2, quarter note B-flat2, quarter note C3. Measure 7: quarter note D3, quarter note E3, quarter note F3, quarter note G3. Measure 8: quarter note G3, quarter note F3, quarter note E3, quarter note D3. There are rests in the second half of measures 6 and 7.

9

10

Measures 9 and 10. Measure 9: quarter note G2, quarter note A2, quarter note B-flat2, quarter note C3. Measure 10: quarter note D3, quarter note E3, quarter note F3, quarter note G3. There are rests in the second half of measure 9.

11

12

Measures 11 and 12. Measure 11: quarter note G2, quarter note A2, quarter note B-flat2, quarter note C3. Measure 12: quarter note D3, quarter note E3, quarter note F3, quarter note G3. There are rests in the second half of measure 11.

13

14

Measures 13 and 14. Measure 13: quarter note G2, quarter note A2, quarter note B-flat2, quarter note C3. Measure 14: quarter note D3, quarter note E3, quarter note F3, quarter note G3. There are rests in the second half of measure 13.

15

16

Measures 15 and 16. Measure 15: quarter note G2, quarter note A2, quarter note B-flat2, quarter note C3. Measure 16: quarter note D3, quarter note E3, quarter note F3, quarter note G3. There are rests in the second half of measure 15.

17

18

Measures 17 and 18. Measure 17: quarter note G2, quarter note A2, quarter note B-flat2, quarter note C3. Measure 18: quarter note D3, quarter note E3, quarter note F3, quarter note G3. There are rests in the second half of measure 17.

19

20

Measures 19 and 20. Measure 19: quarter note G2, quarter note A2, quarter note B-flat2, quarter note C3. Measure 20: quarter note D3, quarter note E3, quarter note F3, quarter note G3. There are rests in the second half of measure 19.

21

22

23

Measures 21, 22, and 23. Measure 21: quarter note G2, quarter note A2, quarter note B-flat2, quarter note C3. Measure 22: quarter note D3, quarter note E3, quarter note F3, quarter note G3. Measure 23: quarter note G3, quarter note F3, quarter note E3, quarter note D3. There are rests in the second half of measures 21 and 22.

24

25



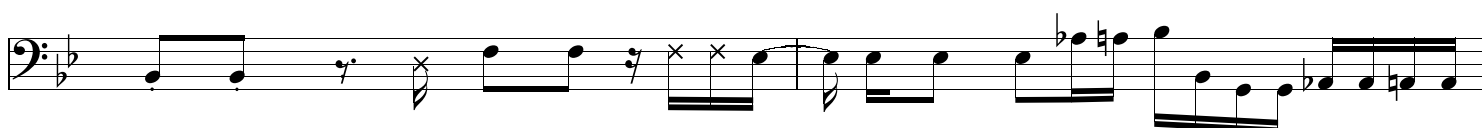
26

27



28

29



30

31

32



33

34

35



36

37



38

39



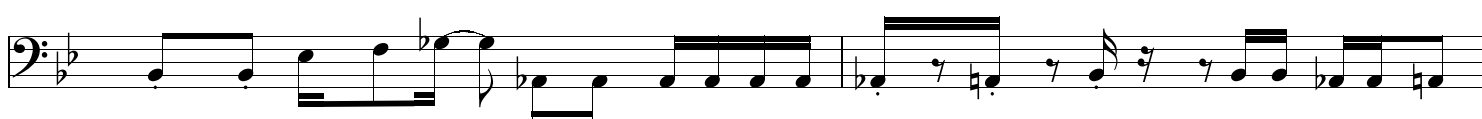
40

41



42

43



44

45



46

47



48

49



50

51



52

53



54

55

56



57

