

Gi Bolje 1064



1064
1964

This image shows a handwritten musical score consisting of six staves. The notation is dense and appears to be a form of shorthand or a specific dialect of musical notation, possibly for a keyboard instrument. The notation includes various symbols such as vertical stems, horizontal lines, and small circles or dots, often grouped together. Some staves begin with a treble clef and a key signature of one sharp (F#). The music is organized into measures by vertical bar lines. There are several instances of plus signs (+) and curved lines above the staves, which may indicate performance instructions or specific musical techniques. The overall appearance is that of a personal or working manuscript.

Handwritten musical notation on two staves. The notation is written in treble clef with a key signature of two sharps (F# and C#). The first staff contains several measures of music, with some notes marked with a '+' sign. The second staff continues the notation with similar rhythmic patterns and note values.

A blank musical staff with a treble clef and a key signature of two sharps (F# and C#).

Handwritten musical notation on a single staff. The notation is written in treble clef with a key signature of two sharps (F# and C#). It consists of several measures of music with various note values and rests.

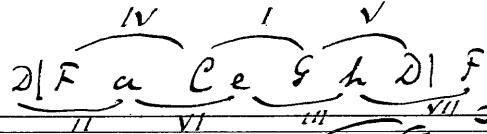
Handwritten musical notation on a single staff. The notation is written in treble clef with a key signature of two sharps (F# and C#). It consists of several measures of music with various note values and rests.

A blank musical staff with a treble clef and a key signature of two sharps (F# and C#).

Handwritten musical notation for two staves. The top staff begins with a treble clef and a key signature of two sharps (F# and C#). The music consists of a series of notes, many of which are beamed together in groups. There are several measures with a '+' sign above the staff, indicating a repeat or a specific performance instruction. The notation is dense and appears to be a rhythmic exercise or a short piece.

Two empty musical staves, one above the other, with no notation or clefs.

Handwritten musical notation for four staves. The top staff of this system begins with a treble clef and a key signature of two sharps (F# and C#). The notation is similar to the top system, featuring beamed notes and '+' signs. The bottom two staves of this system are mostly empty, with some faint markings and a few notes, suggesting they might be for a second part or are left blank.



a) liggande ton
 b) inströrelse (i synlighet : slutbildning)

Direkt förvänta

alltid liggande toner i rumsetten

Indirekt förvänta

alltid inströrelse (ingen gemensam ton)

Indirekt förvänta

Tens för-
 dubbling
 i gitter
 i gitter
 de V förvänta eller efterlysa.

direkt ackordets harmoniska förändring i slutbildning.

a) in bit.

Quartsackordets harmon. förändring inom en fluktivering.

a) bröst och förändr. gromten. c) förändr. tert genom III' konflikten VI iakttagits.
Melodisk förändring af quartsackord. vid fluktivering!

a) vid fluktivering skall 2:de för Thesis och quinten är brist på förändring.
c) öfr. stämmorna två ty stegvis, basen springer stegvis (brist)

Quartsackordet för Arsis är genomgående
Basen måste fortsätta stegvis eller ligga kvar.

Arsis är quartsackord. af I, IV, V

Quartsackordet utan förändring (fikt)

a) vid ackord förändringar vid modulationer till andra tonarter.
Tre Quartsackorden för 2:de följer för kommande

a) riktig b) falskt ty: 2:de förändr. quartsackorden.

Toz' er en flere sctackender keema følger på hvaranden, de bærer skiden skjøvis.
7' rena skjønsa utseem mite dom. sept. ackorden grundten eller septime frubendes.

Dom. sept.
ackordet
uppløsing

a) V_7 I

b) i symmetri indskudsen i med ubilenen 2' quint.

d) V_7 VI

e) fælgende ten, de fæser ligger i over septimanen
men blot i dur

f) V_7 IV

det. liggende septime

g) blot i dur

h) i med modulationen liggende quint og septime.

i) CV_7 II CV_7 VI

VII_7 Dur

VII_7 moll

VII_7 Dur moll

17

1 *in einer umkehrung*

hii IV hii IV hii II hii VII⁶ hii I

117

hii V hii III hii I

septimen kann ich
falsch appell.

hii VI hii VI hii IV hii II

deunochi wolt:

1117

hii VI hii VI hii IV hii II

septim. kann ich
falsch appell

N₂

lin V *lin III* ⁶ *lin IV* ⁶ *lin IV* ⁶

Schein trübselig

V₁₇

lin II *lin II* *lin VII°* *lin V* ⁶

Sept. kann ich / das uffsch.

C *V₁₇* *N₂* *V*

1. Enkelt kvinttvejet : dur: I-V . Regel: Hver i første nummer, eller fulde baser, 2^o personer
 Hver i anden lege; i enkelte fald personer del spriddes.

a) normal stemføring 1-V 1-V 1-V
 b) di. c. f. eller betjening i enkelte en del, som kaldes normale stemføring. Læsten (f i amole) for ej for dobbles.

J: Andetvejet for de vilde
Memorand for de vilde
Besten kan dog se sine grunde
hægrunden.

2. Enkelt underkvinttvejet : krole: 1-IV . Læsten (f i amole) for ej for dobbles.

3. Dobbelting I-IV i dur; I-V i krole

Dur Krole

Personer sine grunde hie grunden, eller giv en betændtvejet.
 Andre akkorder tær (uden as, i amole sis) for ej for dobbles
 Stager as = e, c = jør stige for ikke anvendes.

4. Moberg's Key: I-IV; Dur, i-v; kv. First doubling for of the i and/or akordet
 in parallel motion, men vil vid utvidning.

Handwritten musical notation for exercise 4. The treble clef staff contains chords and notes with the following labels: *Dur*, *Moll*, *Dur*, *Moll*, *Dur*, *Moll*. The bass clef staff contains corresponding chords and notes. The text *Stämning 4 1.* is written below the first measure of the treble staff. The text *Korrekt* and *Deligt* are written below the treble staff in the second and third measures respectively.

5. Meltonsky: Dur: IV-V; i-moll v-iv. Motivellse. Stående för en fjärdedel h-f = Tri-kvart.
 för ej ändras.

Handwritten musical notation for exercise 5. The treble clef staff contains chords and notes with the label *Dur* below the first measure. The bass clef staff contains corresponding chords and notes. The text *Motivellse* is written above the treble staff in the second measure. The text *Stående för en fjärdedel h-f = Tri-kvart. för ej ändras.* is written above the treble staff in the third measure.

Four sets of empty musical staves, each consisting of a treble clef staff and a bass clef staff, arranged vertically.