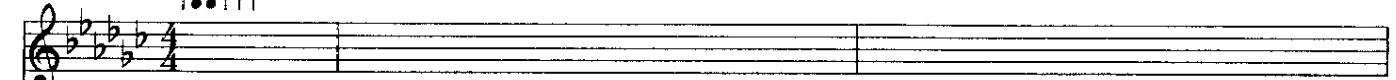


LET'S GO CRAZY

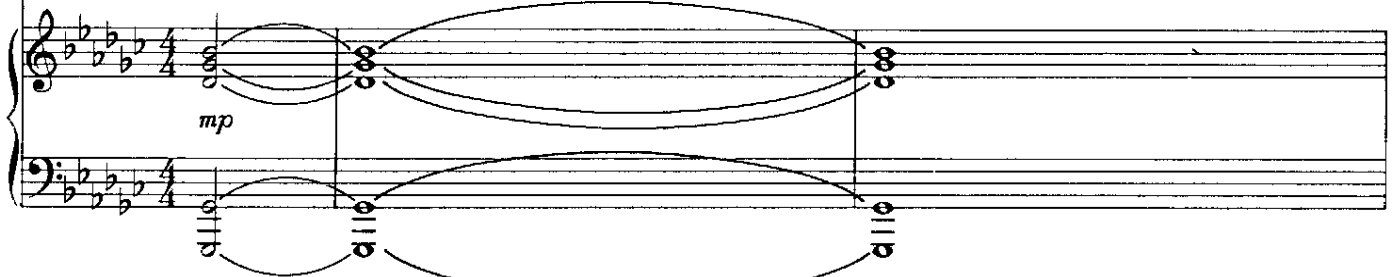
Words and Music by
PRINCE

Slowly and freely

G \flat



(spoken) Dearly beloved, we r gathered here today 2 get through this thing called life.



mp

G \flat sus4



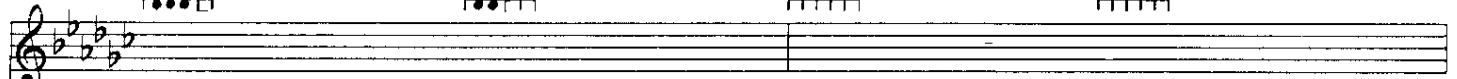
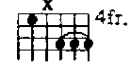
G \flat



E \flat m



B \flat m/D \flat



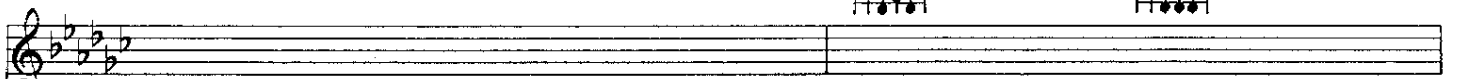
Electric word, "life"; it means forever, and that's a mighty long time. But I'm here 2



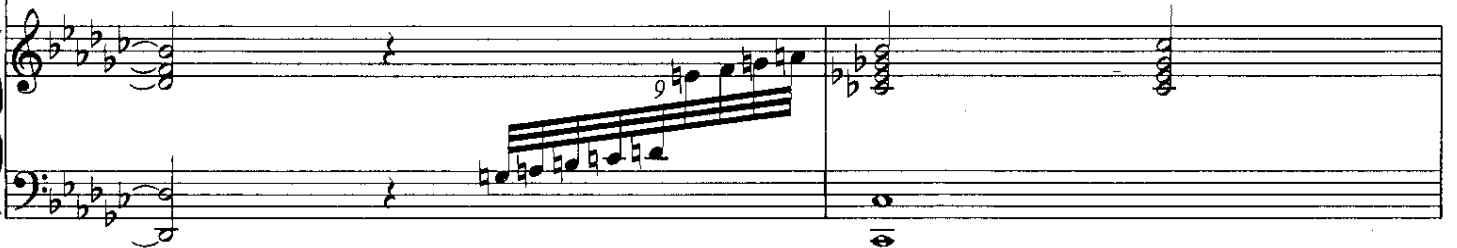
C \flat maj7



C \flat



tell u there's something else: the afterworld, a world of never-ending happiness; u can



Db7 4fr.

Db7sus4 4fr.

Gb

always see the sun, day or night. So when u call up that shrink in Beverly

Gbsus2

Hills, u know the one, Dr. Everything'll be alright, instead of asking him how much of your time

Gb

Gbsus4

Gb

is left, ask him how much of your mind, baby, 'cuz in this life things r much harder than in the

Fast Rock beat ()

Gb

afterworld, In this life you're on your own.

f

Cb

Gb

Cb



And if de el - e - va - tor tries 2 bring—

Gb

Cb

Gb



— u down, go cra - zy;—

Cb

Gb

Cb



punch a high - er floor.

R.H.

Gb

Cb



Chords: Gb, Cb, Gb

If u don't like the world you're liv - in' in,
 all ex - cit - ed, but we don't know why.

Chords: Cb, Gb, Cb

take a look a - round u; at
 May - be it's 'cuz we're

Chords: Gb, Cb, Gb

least u got friends. U see, I called my old la - dy
 all gon - na die. And when we do,

Chords: Cb, Gb, Cb

4 a friend - ly word. - She just
 what's it all 4? U

Chord diagrams: Gb, Cb, Gb

picked up the phone, dropped it on the floor. Sex, sex is
bet - ter live now be - fore the grim reap - er comes knock - ing sex on your

Chord diagrams: Cb, Db 4fr.

all I heard... } R we gon - na let de el - e - va - tor
door... } Tell me, }

Chord diagrams: Ebm 6fr., Cb, Db 4fr. Tacet, Gb

bring us down? Oh no. Let's go! Let's go cra -

Chord diagrams: Cb, Gb, Cb

zy. Let's get nuts. Let's

G \flat

C \flat

G \flat

C \flat

To Coda $\text{\textcircled{C}}$

look 4 the pur - ple ba - nan - a 'til they put us in the truck... Let's... go!

G \flat

D \flat m7 4fr.

G \flat

8va

1. D \flat m7

4fr.

2. D \flat m7

4fr.

D.S. $\text{\textcircled{C}}$ al Coda $\text{\textcircled{C}}$

We're

(8va)

(8va)

Coda $\text{\textcircled{C}}$

G \flat

C \flat

G \flat

Doc - tor Ev - 'ry - thing - 'll be al - right - 'll make ev - 'ry - thing go wrong...

Cb Gb Cb

Pills and thrills and daf - fo - dils

Gb Cb Gb

— will kill. Hang tough, chil - dren.

8va

Dbm7 4fr. Gb Dbm7 4fr.

He's com - ing, he's

(8va)

Gb Dbm7 4fr. Gb

com - ing, he's com - ing.

(8va)

Dbm7 4fr. Gb Dbm7 4fr.

(8va)

This system shows a piano accompaniment in a key with three flats. The right hand has a melodic line with some grace notes. The left hand plays a steady bass line. Above the staff, guitar chord diagrams are provided for Dbm7 (4 fret) and Gb. A dashed line labeled '(8va)' indicates the octave for the guitar parts.

1. Dbm7 2. Dbm7 Fb(no3rd)

(8va) (8va)-7 loco

This system contains two endings. The first ending leads back to the beginning of the system. The second ending leads to a 'loco' section where the right hand plays a melodic phrase. Chord diagrams for Gb, Dbm7 (4 fret), and Fb (no 3rd) are shown above the staff. A dashed line labeled '(8va)' is present.

Db(no3rd) 4fr.

This system features a series of chords in the right hand, with a melodic line in the left hand. A guitar chord diagram for Db (no 3rd) at the 4th fret is shown above the staff.

Slowly No chord

R.H.

This system is marked 'Slowly' and 'No chord'. It features a right-hand melodic line (R.H.) in the treble clef and a bass line in the bass clef. The time signature is 12/8.