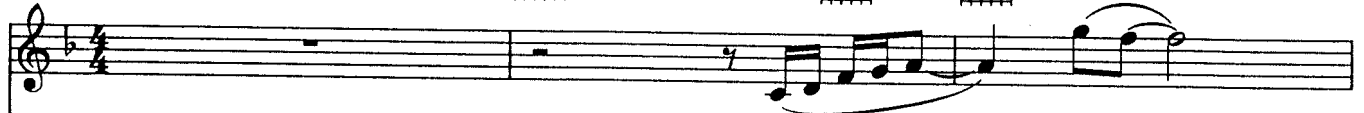


BEAUTY AND THE BEAST

Lyrics by
HOWARD ASHMAN

Music by
ALAN MENKEN

Moderately slow $\text{♩} = 72$



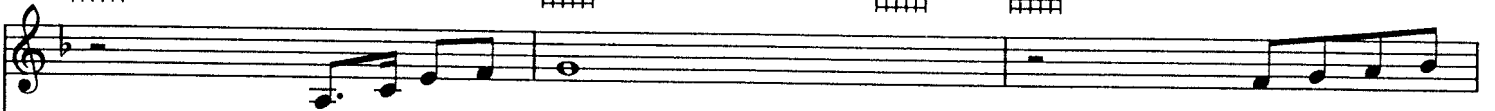
Female: Ooh. _____ Male: Ooh. _____



(with pedal)



Female: Tale as old as _____ time, _____



true as it can be.

Bare-ly e - ven



Am7

Bb(9)

C7sus

C

friends, then some-bod - y bends un - ex - pect - ed - ly.

D

G/D

A/D

D(9)

D

Male: Just a lit - tle change. Small, to say the

Am7/D

D7

Gmaj7

D(9)/F#

Em7

D/A

A7

least. Both a lit - tle scared, nei - ther one pre - pared. Both: Beau - ty and

D

F#m7

the Beast. Ev - er just the same.



Musical staff with treble clef and key signature of one sharp (F#). It contains a vocal line with lyrics and a piano accompaniment. The lyrics are "Ev - er a sur - prise." and "Ev - er as be -".

Ev - er a sur - prise.

Ev - er as be -

Piano accompaniment for the first system, including treble and bass staves with chords and melodic lines.



Musical staff with treble clef and key signature of one sharp (F#). It contains a vocal line with lyrics and a piano accompaniment. The lyrics are "fore, and ev - er just as sure as the sun will rise."

fore, and ev - er just as sure

as the sun will rise.

Piano accompaniment for the second system, including treble and bass staves with chords and melodic lines.



Musical staff with treble clef and key signature of one sharp (F#). It contains a vocal line with lyrics and a piano accompaniment. The lyrics are "Male: Whoa, oh, oh. Woo oh."

Male: Whoa, oh, oh.

Woo oh.

Piano accompaniment for the third system, including treble and bass staves with chords and melodic lines. A "cresc." marking is present in the piano part.

cresc.



Musical staff with treble clef and key signature of one sharp (F#). It contains a vocal line with lyrics and a piano accompaniment.

Piano accompaniment for the fourth system, including treble and bass staves with chords and melodic lines.



Musical staff with vocal line and piano accompaniment.

Both: Ev - er just the same.

Male: Yeah, yeah...

Ev - er a sur -

Musical staff with piano accompaniment.



Musical staff with vocal line and piano accompaniment.

prise.

Both: Ev - er as be - fore,

Female: ev - er just as

Musical staff with piano accompaniment.



Musical staff with vocal line and piano accompaniment.

sure Both: as the sun will rise.

Male: Oh, oh, oh.

Musical staff with piano accompaniment.



Musical staff with vocal line and piano accompaniment.

Female: Tale as old as time,

tune as old

Musical staff with piano accompaniment.



as _____ song. _____

Both: Bit - ter sweet and strange, find - ing you can



change, learn - ing_ you were wrong. _____

Male: Cer - tain as the



sun. _____ *Female:* (Cer - tain_ as the sun.) _____ *Male:* ris - ing in the East. *Female:* Tale as old as



time, *Both:* song as old as rhyme. Beau - ty_ and the _____ Beast.



Female: Tale as old as ___ time, Male: song as old as ___ rhyme. Both: Beau-ty and the ___

Female: Tale as old as ___ time, Male: song as old as ___ rhyme. Both: Beau-ty and the ___



Beast.

Beast.



Freely



Beau-ty and the Beast.