

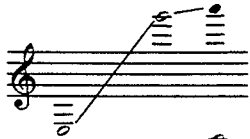
APPENDIX II


Student and Amateur Ranges of Common Instruments

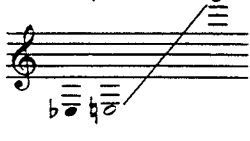
The ranges are given as written for the instruments, and are calculated at about high school senior or college freshman level. For transpositions, see the main text heading for each instrument.

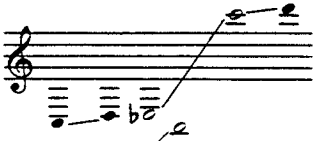
The image displays five musical staves, each representing the range of a different instrument. Each staff begins with a treble clef and a common time signature (C). A diagonal line indicates the range of the instrument, starting from a whole note on the first line (C4) and ending at a whole note on the top line (C5). The instruments and their specific ranges are:

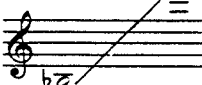
- piccolo**: Range from C4 to C5.
- flute**: Range from C4 to C5.
- oboe**: Range from B3 to C5.
- English horn**: Range from B2 to C5.
- E♭ clarinet**: Range from B2 to C5.

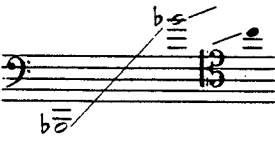
B \flat clarinet 


alto clarinet 


bass clarinet 


contra-alto clarinet
contrabass clarinet 


saxophone (all sizes) 

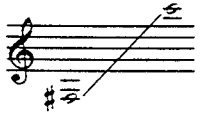
bassoon 

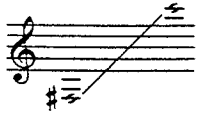
horn 


trumpet in C 

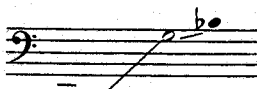
trumpet in B \flat 

trombone 

flügelhorn 

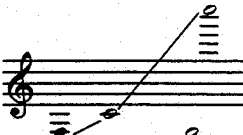
alto horn 


baritone horn 

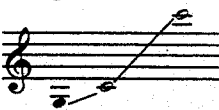
tuba (bass or contrabass) 


timpani 


chimes 

xylophone 

marimba 


glockenspiel 


vibraphone 

celesta 

piano
electric piano } full normal range
organ }

harp 

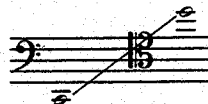
guitar 

violin 

viola



cello



contrabass



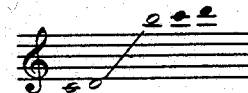
soprano recorder



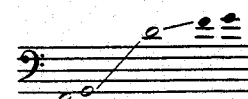
alto recorder
sopranino recorder



tenor recorder



bass recorder



harpsichord



8', 4'