

BABY I'M A STAR

Words and Music by
PRINCE

Bright Rock beat

Chord diagrams: C/D (0 3fr.), Bm/D (0), Dsus2 (0 0), Am7 (0 0 0), G/A (0 3fr.), Dsus2 (0 0), C/D (0 3fr.), Bm/D (0), Dsus2 (0 0), Am7 (0 0 0), G/A (0 3fr.), Am7 (0 0 0), G/A (0 3fr.), G (x000), D/G (x0), A (0 0).

mf

Am7 G/A Am7 G/A Dsus2 C/D Bm/D Dsus2

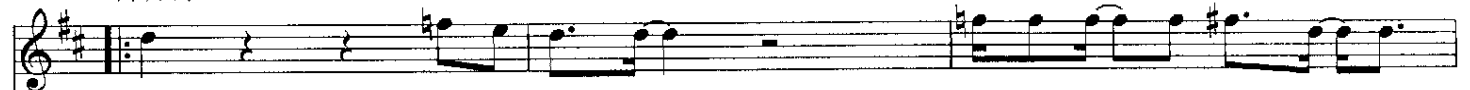
Am7 G/A Am7 G/A

G D/G A

D(no3rd)



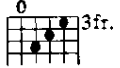
Am7



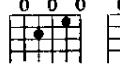
Hey, look me o - ver... Tell me, do_ u like what you
Hey, take a lis - ten... Tell me, do_ u like what you



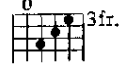
G/A



Am7



G/A



D(no3rd)



see? hear? If Hey, I ain't got_ no just
it don't turn u on, _



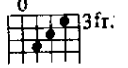
Am7



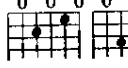
mon - ey, but hon - ey, I'm rich on per - son - al - i - ty_
say the word_ and I'm gone, but hon - ey, I know ain't noth - ing wrong with your



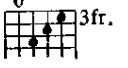
G/A



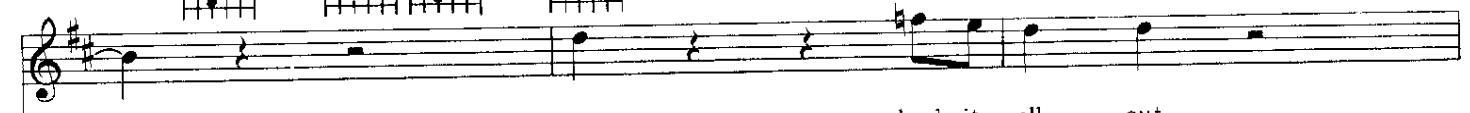
Am7



G/A



D(no3rd)



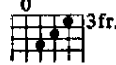
ears. Hey, check it all out.
Hey, check it all out.



Am7



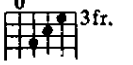
G/A



Am7



G/A



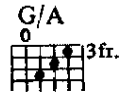
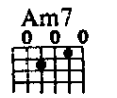
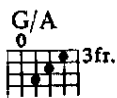
Ba - by, I know what it's all a - bout. Be -
 Bet - ter look now or it just might be 2 late. My

D(no 3rd)



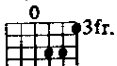
fore the night is through u will see my point of view, -
 luck's gon - na change to - night. There's got - ta be a bet - ter life. - Take a

Am7



e - ven if I have 2 scream and shout. Ba - by, I'm a
 pic - ture, sweet-ie; I ain't got time 2 waste. Oh, ba - by, I'm a

C/D



Bm/D



Dsus2



N.C.

star. U
 star.

Am7 G/A Am7 G/A

Might not know it now, - ba - by, but I r, I'm a
 might not know it now, - ba - by, but I r, I'm a

Dsus2 C/D Bm/D Dsus2 Am7

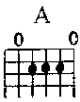
star. } I don't wan - na stop
 star. }

G/A Am7 G/A G D/G A

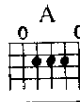
'til I reach... the top. (We r all a star.)

C Bm7

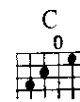
Ev - 'ry - bod - y say noth - ing comes... 2 eas - y. But when you



got it, ba - by, noth - ing comes... 2 hard. — You'll



see what I'm all a - bout, — if I got - ta scream and shout. —



Ba - by, — ba - by, — ba - by, — ba - by. —

N.C.

F/G G F/G Am/G G F/G G D/G A

This system contains the first two measures of the piece. The guitar part features a sequence of chords: F/G, G, F/G, Am/G, G, F/G, G, D/G, and A. The bass line consists of a steady eighth-note pattern. The treble clef part has a complex, rhythmic accompaniment.

G D/G A

This system contains the next two measures. The guitar part continues with G, D/G, and A chords. The bass line maintains the eighth-note pattern. The treble clef part continues with its rhythmic accompaniment.

G D/G A G D/G A

This system contains the next two measures. The guitar part continues with G, D/G, and A chords. The bass line maintains the eighth-note pattern. The treble clef part continues with its rhythmic accompaniment.

G D/G A/G G D/G A/G G D/G A D

This system contains the final two measures of the piece. The guitar part concludes with G, D/G, A/G, G, D/G, A/G, G, D/G, A, and D chords. The bass line maintains the eighth-note pattern. The treble clef part concludes with its rhythmic accompaniment.