

# Born Under A Bad Sign

Bass Line originally played by Donald " Duck " Dunn  
Transcription By Pierre Verger, 1975  
Blues

As recorded by Albert King, Memphis 1967  
Composer : Booker T Jones & William Bell

1  $\text{♩} = 90$  2 3 4

Bass Guitar

5 6 7 8

9 10 11 12

13 14 15 16

17 18 19 20

21 22 23 24

25 26 27 28

29 30 31 32

33 34 35 36

37 38 39 40

The image displays a musical score for the bass guitar part of the song "Born Under A Bad Sign". The score is written in a 4/4 time signature with a key signature of one sharp (F#). The tempo is indicated as quarter note = 90. The score is divided into 40 numbered measures, arranged in ten rows of four measures each. The notation includes various rhythmic values such as quarter notes, eighth notes, and sixteenth notes, along with rests and accidentals. The bass line starts with a quarter rest in measure 1, followed by a series of rhythmic patterns that are characteristic of the original recording by Donald "Duck" Dunn. The piece concludes with a final chord in measure 40.

41

42

43

44



45

46

47

48

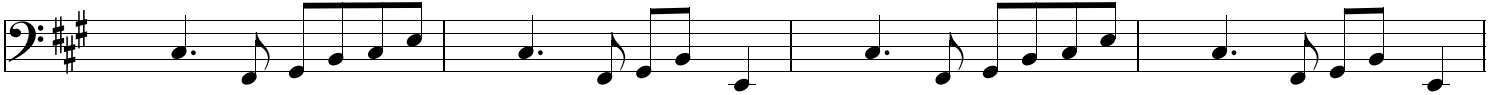


49

50

51

52



53

54

55

56

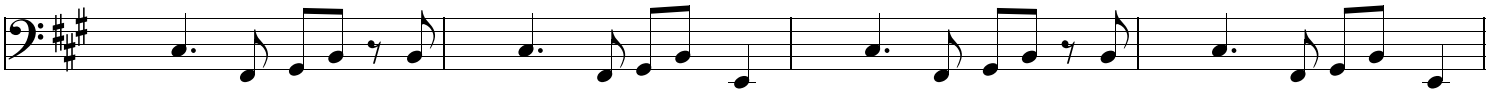


57

58

59

60



61

( X's Ind. )

62

63

64

