

The Girl From Ipanema

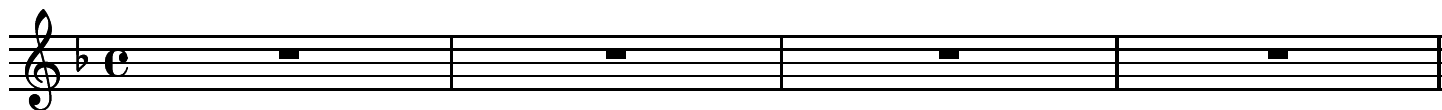
garota de ipanema

ANTONIO CARLOS JOBIM
C- C-6

F₆⁹

C-

C-6

F₆⁹F_Δ⁹G₁₃

Tall and tan and young and love-ly the girl from I - pa - ne - ma goes walk-ing and when
When she walks she's like a Sam-ba that swings so cool and sways so gen-tle, that when

G-

G^b₇^{b5}F_ΔG^b₇F_Δ

1.

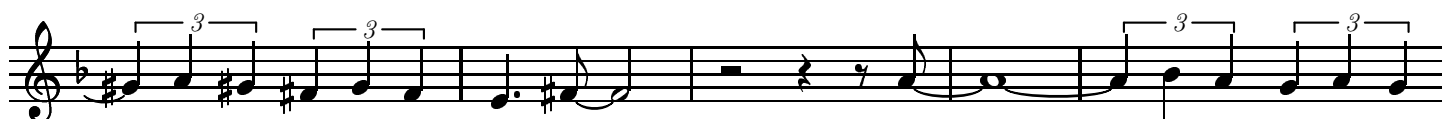
2.



she pass - es, each one she pass - es goes Aaaah!
she pass - es, each one she pass - es goes Aaaah!

G^b_ΔC^b₉F[#]₋₉

Oh, but I watch her so sad - ly. How

D₉G₋₉

can I tell her I love her? Yes, I would give my heart

E^b₉

A-

D₇^{b9}_{#11}

G-



glad - ly. But each day when she walks to the sea, she looks straight a-head not at

C7^{b9}_{#11}F Δ ⁹

G13



me Tall and tan and young and love - ly the girl from I - pa - ne-

G-9

G^b_{7b5}F Δ G^b_{7b5}

- ma goes walk-ing and when she pass-es I smile, but she does-n't see

F Δ G^b_{7b5}F Δ G^b_{7b5}F Δ G^b_{7b5}F Δ 