

LE GRAND TANGO

per violoncello (o viola) e pianoforte

VIOLONCELLO

Astor PIAZZOLLA
(1921-1992)

Tempo di Tango (♩ : 116)

Marcato

The musical score for the Cello part of 'Le Grand Tango' is written in bass clef with a 2/4 time signature. The tempo is marked 'Tempo di Tango (♩ : 116)' and the style is 'Marcato'. The score begins with a dynamic of *mf*. The first staff contains measures 1-8. The second staff contains measures 9-16, with a dynamic of *f* starting at measure 9. The third staff contains measures 17-24, with a dynamic of *ff* starting at measure 17. The fourth staff contains measures 25-32, with a dynamic of *f* starting at measure 25. The fifth staff contains measures 33-40, with a dynamic of *ff* starting at measure 33. The score includes various articulations such as accents, slurs, and glissandos. Measure numbers 9, 17, and 25 are indicated in boxes. The piece concludes with a double bar line and the instruction 'IIa'.

III^a Corda - - - - -

31

p dolce

40

mf

II^a

III^a

47 *Deciso*

54

mf

II^a

62

II I *Detaché*

70 *Detaché* *f*

76 *Detaché*

II I... *mf*

85 *f* *ff*

mf

95 *ff*

mf rall.

103 *Meno mosso* (♩ = 80)

A Tempo

Two staves of musical notation in bass clef. The first staff contains measures 103 and 104. Measure 103 features a series of eighth notes with a slur, followed by a quarter note. Measure 104 continues with eighth notes and a quarter note. A dynamic marking *mf* is placed below the first staff.

mf (*Libero e cantabile*)

Two staves of musical notation in bass clef. The first staff contains measures 105 and 106. Measure 105 has eighth notes with a slur. Measure 106 has eighth notes with a slur and a quarter note. A dynamic marking *rall.* is placed below the first staff. The second staff contains measures 107 and 108. Measure 107 has eighth notes with a slur. Measure 108 has eighth notes with a slur and a quarter note. A dynamic marking *A Tempo* is placed above the second staff.

Two staves of musical notation in bass clef. The first staff contains measures 111 and 112. Measure 111 has eighth notes with a slur and a dynamic marking *f*. Measure 112 has eighth notes with a slur. The second staff contains measures 113 and 114. Measure 113 has eighth notes with a slur. Measure 114 has eighth notes with a slur and a quarter note.

Two staves of musical notation in bass clef. The first staff contains measures 119 and 120. Measure 119 has eighth notes with a slur. Measure 120 has eighth notes with a slur. A dynamic marking *mf* is placed below the first staff. The second staff contains measures 121 and 122. Measure 121 has eighth notes with a slur. Measure 122 has eighth notes with a slur and a quarter note. A dynamic marking *rall.* is placed below the first staff.

Two staves of musical notation in bass clef. The first staff contains measures 123 and 124. Measure 123 has eighth notes with a slur. Measure 124 has eighth notes with a slur. The second staff contains measures 125 and 126. Measure 125 has eighth notes with a slur. Measure 126 has eighth notes with a slur and a quarter note.

Two staves of musical notation in bass clef. The first staff contains measures 127 and 128. Measure 127 has eighth notes with a slur. Measure 128 has eighth notes with a slur. A dynamic marking *mf* is placed below the first staff. The second staff contains measures 129 and 130. Measure 129 has eighth notes with a slur. Measure 130 has eighth notes with a slur and a quarter note. A dynamic marking *rall.* is placed below the first staff.

Two staves of musical notation in bass clef. The first staff contains measures 131 and 132. Measure 131 has eighth notes with a slur. Measure 132 has eighth notes with a slur. The second staff contains measures 133 and 134. Measure 133 has eighth notes with a slur. Measure 134 has eighth notes with a slur and a quarter note. A dynamic marking *mf* is placed below the first staff.

Two staves of musical notation. The first staff is in treble clef and contains measures 135 and 136. Measure 135 has quarter notes. Measure 136 has quarter notes. A dynamic marking *mf* is placed below the first staff. The second staff is in bass clef and contains measures 137 and 138. Measure 137 has eighth notes with a slur. Measure 138 has eighth notes with a slur. A dynamic marking *tristemente* is placed below the first staff.

Two staves of musical notation in bass clef. The first staff contains measures 139 and 140. Measure 139 has eighth notes with a slur. Measure 140 has eighth notes with a slur. The second staff contains measures 141 and 142. Measure 141 has eighth notes with a slur. Measure 142 has eighth notes with a slur and a quarter note.

144

151

163

171

177 *libero e cantabile*

185

A Tempo

Più Mosso (♩ = 120)

194

Measures 194-201: Bass clef, 4/4 time. Measure 194 starts with a forte (f) dynamic. The music features a series of eighth notes with slurs and accents. Measure 195 has a triplet of eighth notes. Measure 196 has a triplet of eighth notes. Measure 197 has a triplet of eighth notes. Measure 198 has a triplet of eighth notes. Measure 199 has a triplet of eighth notes. Measure 200 has a triplet of eighth notes. Measure 201 has a triplet of eighth notes. The piece ends with a repeat sign and the number 11.

202

Measures 202-211: Bass clef, 4/4 time. Measure 202 starts with a forte (sf) dynamic. The music features a series of eighth notes with slurs and accents. Measure 203 has a triplet of eighth notes. Measure 204 has a triplet of eighth notes. Measure 205 has a triplet of eighth notes. Measure 206 has a triplet of eighth notes. Measure 207 has a triplet of eighth notes. Measure 208 has a triplet of eighth notes. Measure 209 has a triplet of eighth notes. Measure 210 has a triplet of eighth notes. Measure 211 has a triplet of eighth notes.

Measures 212-216: Treble clef, 4/4 time. Measure 212 starts with a forte (sf) dynamic. The music features a series of eighth notes with slurs and accents. Measure 213 has a triplet of eighth notes. Measure 214 has a triplet of eighth notes. Measure 215 has a triplet of eighth notes. Measure 216 has a triplet of eighth notes.

Measures 217-224: Bass clef, 4/4 time. Measure 217 starts with a forte (sf) dynamic. The music features a series of eighth notes with slurs and accents. Measure 218 has a triplet of eighth notes. Measure 219 has a triplet of eighth notes. Measure 220 has a triplet of eighth notes. Measure 221 has a triplet of eighth notes. Measure 222 has a triplet of eighth notes. Measure 223 has a triplet of eighth notes. Measure 224 has a triplet of eighth notes.

212

Measures 212-216: Bass clef, 4/4 time. Measure 212 starts with a forte (sf) dynamic. The music features a series of eighth notes with slurs and accents. Measure 213 has a triplet of eighth notes. Measure 214 has a triplet of eighth notes. Measure 215 has a triplet of eighth notes. Measure 216 has a triplet of eighth notes.

217 Giocoso

Measures 217-224: Treble clef, 4/4 time. Measure 217 starts with a forte (sf) dynamic. The music features a series of eighth notes with slurs and accents. Measure 218 has a triplet of eighth notes. Measure 219 has a triplet of eighth notes. Measure 220 has a triplet of eighth notes. Measure 221 has a triplet of eighth notes. Measure 222 has a triplet of eighth notes. Measure 223 has a triplet of eighth notes. Measure 224 has a triplet of eighth notes. The piece ends with a repeat sign and the number IV.

Measures 217-224: Bass clef, 4/4 time. Measure 217 starts with a forte (sf) dynamic. The music features a series of eighth notes with slurs and accents. Measure 218 has a triplet of eighth notes. Measure 219 has a triplet of eighth notes. Measure 220 has a triplet of eighth notes. Measure 221 has a triplet of eighth notes. Measure 222 has a triplet of eighth notes. Measure 223 has a triplet of eighth notes. Measure 224 has a triplet of eighth notes.

225

Measures 225-234: Bass clef, 4/4 time. Measure 225 starts with a forte (sf) dynamic. The music features a series of eighth notes with slurs and accents. Measure 226 has a triplet of eighth notes. Measure 227 has a triplet of eighth notes. Measure 228 has a triplet of eighth notes. Measure 229 has a triplet of eighth notes. Measure 230 has a triplet of eighth notes. Measure 231 has a triplet of eighth notes. Measure 232 has a triplet of eighth notes. Measure 233 has a triplet of eighth notes. Measure 234 has a triplet of eighth notes.

Measures 235-244: Bass clef, 4/4 time. Measure 235 starts with a forte (sf) dynamic. The music features a series of eighth notes with slurs and accents. Measure 236 has a triplet of eighth notes. Measure 237 has a triplet of eighth notes. Measure 238 has a triplet of eighth notes. Measure 239 has a triplet of eighth notes. Measure 240 has a triplet of eighth notes. Measure 241 has a triplet of eighth notes. Measure 242 has a triplet of eighth notes. Measure 243 has a triplet of eighth notes. Measure 244 has a triplet of eighth notes.

233

239

Glissé

7

247

ff II^a Corda
energico

255

ff II^a

263

sfz **sfz**

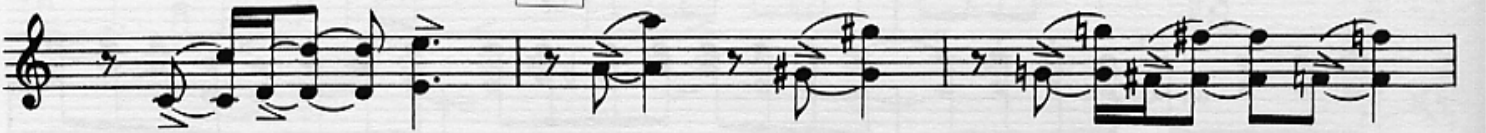
3



279



287



294

stacc. (Frosch)



sfz



stacc. Rude

Glissé

sfz