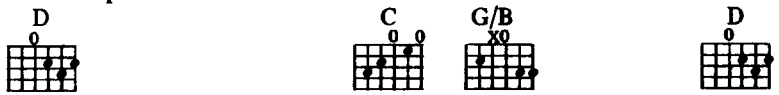


# Borderline

Words & Music by Reggie Lucas

Medium tempo

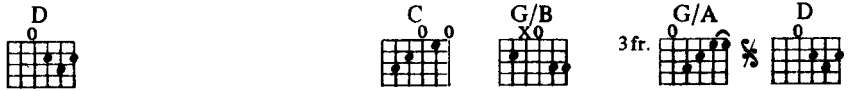
D C G/B D



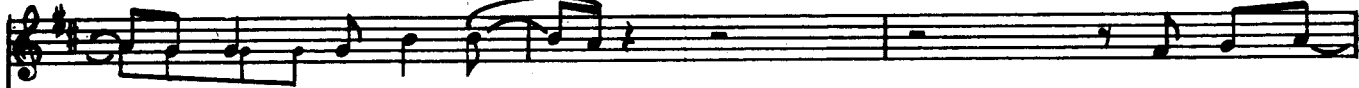
C G/B G/A D C G/B



D C G/B G/A D



Some-thin' in the way you love  
Some-thin' in your eyes is mak -



— me won't let me be. —  
in' such a fool of me. —

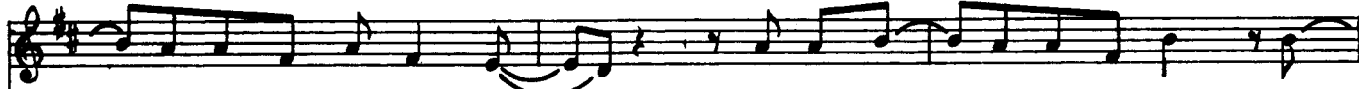
I don't wan-  
When you hold —



na be your pris - 'ner, so ba - by, won't you set me free. —  
me in your arms you love — me till I just can't see. —



Stop play - in' with my heart. Fin - ish what you start when —  
But then — you let me down. When — I look a - round, ba -

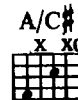
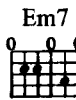
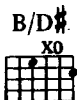


— you make my love come down. — If you want — me let me know. Ba -  
by, you just can't be found. — Stop driv - in' me a - way. I —

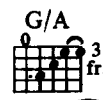




by, let it show. Hon - ey, don't you fool a - round.  
 just wan - na stay. There's some - thin' I just got to say.



Just try to un - der - stand, I've giv -



en all I can, 'cause you got the best of me.



Bor - der - line,

Bm

A

E/G#



feels like I'm go - in' to lose\_ my mind.\_\_\_\_\_ You just keep\_

Em7

D/F#

D/A

A

D/A



\_\_\_ on push - in' my\_\_\_ love o - ver the bor - der-line.

A

A/C#

F#/A#



Bor - der - line, feels like I'm go -

Bm

A

E/G#

Em7

D/F#



in' to lose\_ my mind.\_\_\_\_\_ You just keep\_\_\_ on push - in' my\_\_\_

D/A A D/A A

— love o - ver the bor - der - line.

A/C# F#/A# Bm A E/G#

Keep on push - in' me, ba - by. Don't you know — you drive me cra -

Em7 D/F# D/A

zy? You just keep — on push - in' my — love o - ver the bor -

To Coda

A D/A A D

der - line.

C G/B D C G/B G/A

D C G/B D

*D S.  $\frac{3}{4}$  al Coda*

C G/B G/A Coda A A/C# F#/A#

Look what your love\_

Bm A E/G#

has done to me. Come on, ba-by, set me free. You just keep\_

Em7

D/F#

D/A

A

D/A



— on push - in' my love o-ver the bor - der-line.

A

A/C#

F#/A#



You cause me so much pain — I think I'm go - in' in' - sane.

Bm

A

E/G#

Em7

D/F#



— What does it take to make you see? You just keep on push - in' my

D/A

A

D/A

A

*D. S.  $\frac{3}{4}$  (vocal ad lib) and fade*

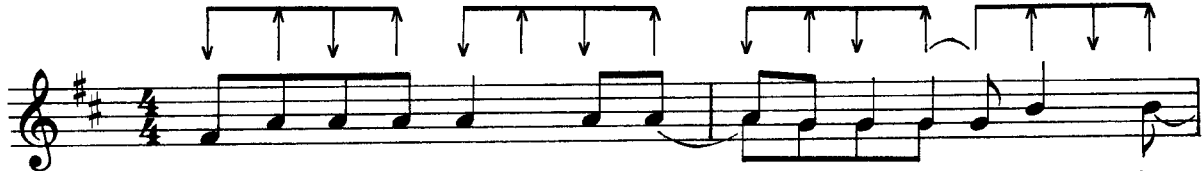
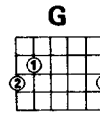
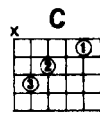
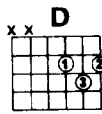


— love o-ver the bor - der-line.

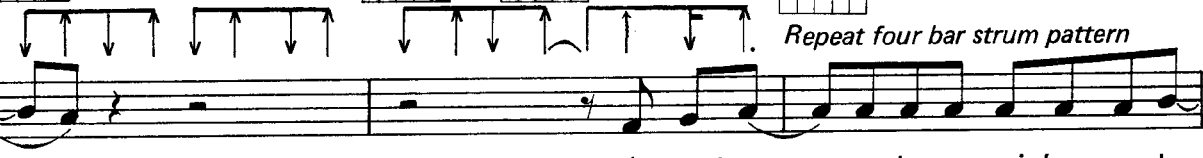
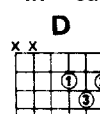
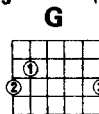
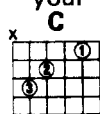
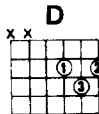
# BORDERLINE

WORDS AND MUSIC: REGGIE LUCAS

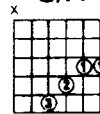
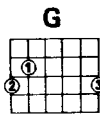
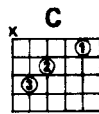
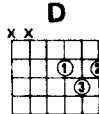
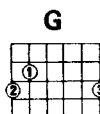
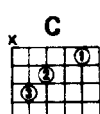
© COPYRIGHT 1984 LIKASA MUSIC PUBLISHING.  
 © COPYRIGHT 1985 LIKASA MUSIC PUBLISHING/BRAMPTON MUSIC LTD., 9 CARNABY STREET, LONDON W1.  
 ALL RIGHTS RESERVED. INTERNATIONAL COPYRIGHT SECURED.



Some-thin' in the way you love — me won't let me be. —  
 Some-thin' in your eyes is mak - in' such a fool of me. —

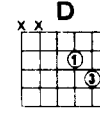
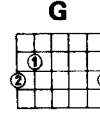
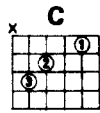
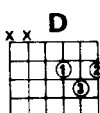


I don't wan - na be your pris'-ner, so ba -  
 When you hold — me in your arms you love

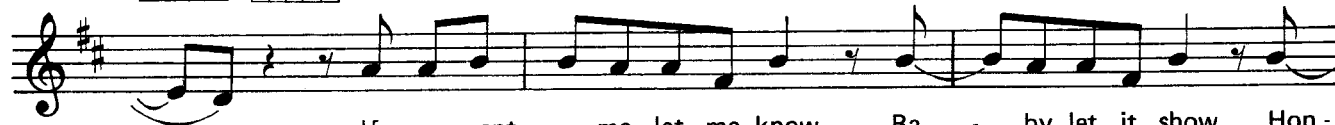
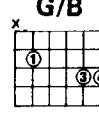
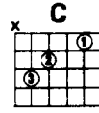
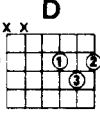
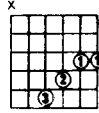
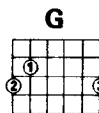
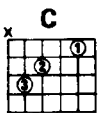


by, won't you set me free. — — — — —  
 — me till I just can't see. — — — — —

Stop play -  
 But then —

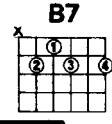
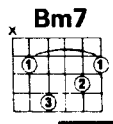
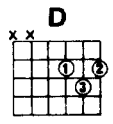


in' with my heart. Fin - ish what you start when — you make my love come down.  
 — you let me down. When — I look a - round, ba - by, you just can't be found.



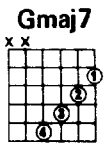
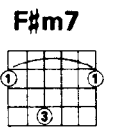
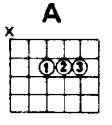
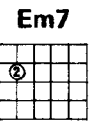
If you want me let me know. Ba - by, let it show. Hon -  
 Stop driv - in' me a - way. I — just wan-na stay. There's





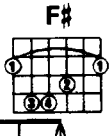
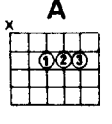
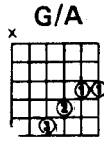
Musical staff with guitar strumming patterns and a treble clef staff with a key signature of one sharp (F#).

ey, don't you fool a - round. — } Just try —  
some-thin' I just got to say. — }



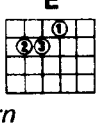
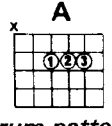
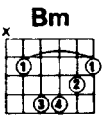
Musical staff with guitar strumming patterns and a treble clef staff. Includes the instruction "Repeat 2 bar strum pattern".

— to un-der - stand, — I've giv - en all — I can, — 'cause you got



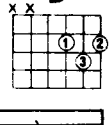
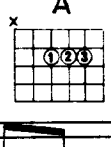
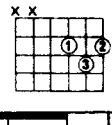
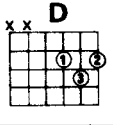
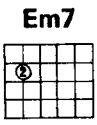
Musical staff with guitar strumming patterns and a treble clef staff.

— the best — of me. — Bor - der line,



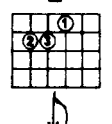
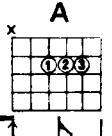
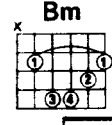
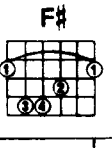
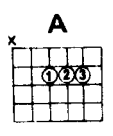
Musical staff with guitar strumming patterns and a treble clef staff. Includes the instruction "Repeat 2 bar strum pattern".

feels like I'm go - in' to lose — my mind. — You just keep.



Musical staff with guitar strumming patterns and a treble clef staff.

— on push - in' my — love o - ver the bor - der - line.



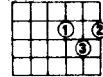
Musical staff with guitar strumming patterns and a treble clef staff.

Bor - der-line, feels like I'm go - in' to lose my mind..

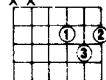
Em7



D

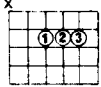


D

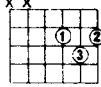


You just keep on push-in' my love o-ver the bor -

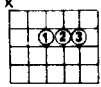
A



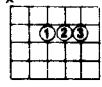
D



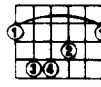
A



A

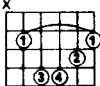


F#

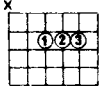


der line. Keep on push-in' me, ba -

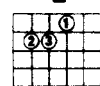
Bm



A

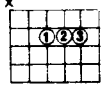


E



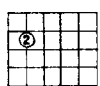
by. Don't you know you drive me cra - zy? You just keep -

A

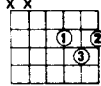


To Coda

Em7

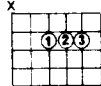


D

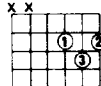


on push-in' my love o-ver the bor - der-line.

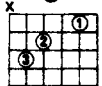
A



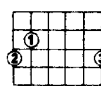
D



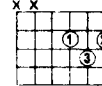
C



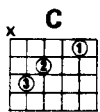
G



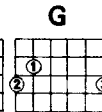
D



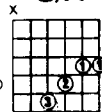
C



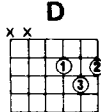
G



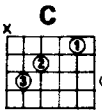
G/A



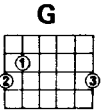
D



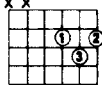
C



G



D



*D.% al Coda*

**CODA**

**F#**

**C**

**G**

**G/A**

**A**

**F#**

Three guitar chord diagrams: C (x0232), G (x0203), and G/A (x0232).

Guitar chord diagram for A (x0202).

Musical staff with notes and strumming arrows. The first part shows a whole rest, followed by a series of eighth notes with strumming arrows above them.

Look what your love

**Bm**

**A**

**E**

Guitar chord diagram for Bm (x2442).

Guitar chord diagram for A (x0202).

Guitar chord diagram for E (x0221).

*Repeat 2 bar strum pattern*

Musical staff with notes and strumming arrows. The first part shows a whole rest, followed by a series of eighth notes with strumming arrows above them.

has done to me. Come on, ba-by, set me free. You just keep

**Em7**

**D**

**D**

**A**

**D**

Guitar chord diagram for Em7 (020210).

Guitar chord diagram for D (x0232).

Guitar chord diagram for D (x0232).

Guitar chord diagram for A (x0202).

Guitar chord diagram for D (x0232).

Musical staff with notes and strumming arrows. The first part shows a whole rest, followed by a series of eighth notes with strumming arrows above them.

on push-in' my love o-ver the bor-der-line.

**A**

**F#**

Guitar chord diagram for A (x0202).

Guitar chord diagram for F# (02341).

Musical staff with notes and strumming arrows. The first part shows a whole rest, followed by a series of eighth notes with strumming arrows above them.

You cause me so much pain I think I'm go-in' in-sane.

**Bm**

**A**

**E**

**Em7**

**D**

Guitar chord diagram for Bm (x2442).

Guitar chord diagram for A (x0202).

Guitar chord diagram for E (x0221).

Guitar chord diagram for Em7 (020210).

Guitar chord diagram for D (x0232).

Musical staff with notes and strumming arrows. The first part shows a whole rest, followed by a series of eighth notes with strumming arrows above them.

What does it take to make you see? You just keep on push-in' my

Guitar chord diagram for D (x0232).

Guitar chord diagram for A (x0202).

Guitar chord diagram for D (x0232).

Guitar chord diagram for A (x0202).

*D.%.*

*(vocal ad lib.) and FADE*

Musical staff with notes and strumming arrows. The first part shows a whole rest, followed by a series of eighth notes with strumming arrows above them.

love o-ver the bor-der-line.