

Beauty & The Beast

highest chart position 10 (as double A side)

release date 4th November 2002

words by **Howard Ashman** music by **Alan Menken**

did you know The duo now have Benny and Bjorn writing music for them after their manager pestered the Abba songwriters over dinner after the premiere of *Chess*. Key to the deal was the fact that Bjorn's daughter was a big Steps fan.

♩ = 76

F Bb/F C/F F Bb/F C/F

(C): Ooh.....

con pedale

F Bb/F C/F F Bb/F C/F

Tale as old as — time, true as it can be.

3

F Am7 Bb C11 C

Bare-ly ev-en friends, then some-bo-dy bends un-ex-pect-ed-ly. —

3



Musical staff with treble clef, key signature of two sharps (F# and C#), and a 3/4 time signature. It contains a vocal line with triplets and rests.

(H): Just a lit-tle change,— small to say the— least. Both a lit-tle

Piano accompaniment for the first system, featuring a treble and bass clef. The bass line has a 3/4 time signature and includes a 3-measure rest.



Musical staff with treble clef, key signature of two sharps, and a 3/4 time signature. It contains a vocal line with triplets and rests.

scares, nei-ther one pre - pared. Beau-ty and the— Beast. (C): Ev - er just the

Piano accompaniment for the second system, featuring a treble and bass clef. The bass line has a 3/4 time signature and includes a 3-measure rest.



Musical staff with treble clef, key signature of two sharps, and a 3/4 time signature. It contains a vocal line with rests.

same, ev - er a sur - prise. Ev - er as be -

Piano accompaniment for the third system, featuring a treble and bass clef. The bass line has a 3/4 time signature.



Musical staff with treble clef, key signature of two sharps, and a 3/4 time signature. It contains a vocal line with triplets and rests.

- fore, ev - er just as sure— as the sun will rise. Oh, oh.

Piano accompaniment for the fourth system, featuring a treble and bass clef. The bass line has a 3/4 time signature.



Musical notation for the first system, including a treble clef staff with a melodic line and a grand staff (treble and bass clefs) with piano accompaniment.



Musical notation for the second system, including a treble clef staff with a melodic line and a grand staff with piano accompaniment. The lyrics "(C): Ooh. Ev - er just the" are written below the treble staff.



Musical notation for the third system, including a treble clef staff with a melodic line and a grand staff with piano accompaniment. The lyrics "same, ev - er a sur - prise. Ev - er as be -" are written below the treble staff.

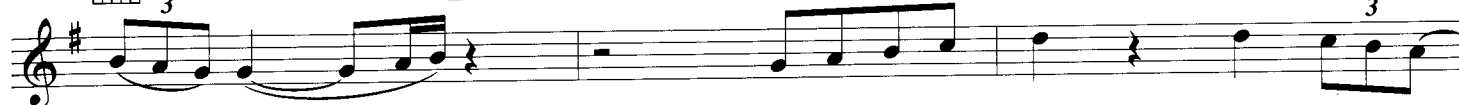


Musical notation for the fourth system, including a treble clef staff with a melodic line and a grand staff with piano accompaniment. The lyrics "- fore, ev - er just as sure (H): as the sun will rise. Oh, oh, oh!" are written below the treble staff.



(C): Tale as old as time,

tune as old—



as song.

Bit - ter sweet and strange,

find - ing you can—



change, learn - ing you were wrong.

(H): Cer - tain as



the sun

ris - ing in the east,

(C): tale as old



Amaj7 F#m7 B11 E rit. C#m G#m/B

— as time, — song as old as rhyme, Beau-ty and the ———— Beast. ———— Tale as old as

Amaj7 E/G# F#m7 B11 a tempo E A/E B/E

time, (H): song as old as rhyme, Beau-ty and the Beast. ———— (H): Na —

E A/E F#m7(b5)/C E/B rit. F#/A# Adim E/G# C#9sus4

— na na na. ———— Oh — oh. ———— Mm. —(C): Ooh — ooh ———

C#7(b9) F#m7 B11 E

ooh. ———— Beau-ty and the Beast.